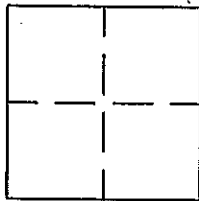


CORNER RECORD

APN No. _____ (Optional) Document Number CR - 1961
 UNINCORPORATED County of ALAMEDA, California
 Brief Legal Description MONUMENTS AT SOUTHEASTERLY END OF SHADYSPRING ROAD, AND AT GAIL DRIVE.



CORNER TYPE

Government Corner ☐ Control ☐
 Meander ☐ Property ☐
 Rancho ☐ Other ☒
 Date of Survey JULY 2003

COORDINATES (Optional)

N. _____
 E. _____
 Zone _____ Datum _____
 Elev. _____

Corner - Left as found ☒ Found and tagged ☐ Established ☐ Reestablished ☐ Rebuilt ☐

In compliance with Section 8771 of the Professional Land Surveyors' Act, this corner record is being filed to ESTABLISH X / REESTABLISH _____ the position of an existing monument PRIOR X / SUBSEQUENT _____ to street or highway reconstruction. (Use this portion only when applicable.)

Identification and type of corner found: Evidence used to identify or procedure used to establish or reestablish the corner: THE MONUMENTS DESCRIBED BELOW WERE REFERENCED BY THE INTERSECTION OF TWO LINES DEFINED BY SIX SCRIBED CROSSES ON CONCRETE SIDEWALKS. SEE DRAWING NEXT PAGE.

A description of the physical condition of the monument as found and as set or reset: TWO MONUMENTS WITH PINS IN STANDARD MONUMENT WELLS WERE FOUND IN GOOD CONDITION ON SHADYSPRING ROAD AT THE INTERSECTION OF GAIL DRIVE AND AT THE SOUTHEASTERLY END OF SHADYSPRING ROAD. THESE MONUMENTS ARE IN DANGER OF BEING DESTROYED DUE TO ROAD CONSTRUCTION.

SURVEYOR'S STATEMENT

This Corner Record was prepared by me or under my direction in conformance with the Land Surveyors' Act on September 5, 2003.

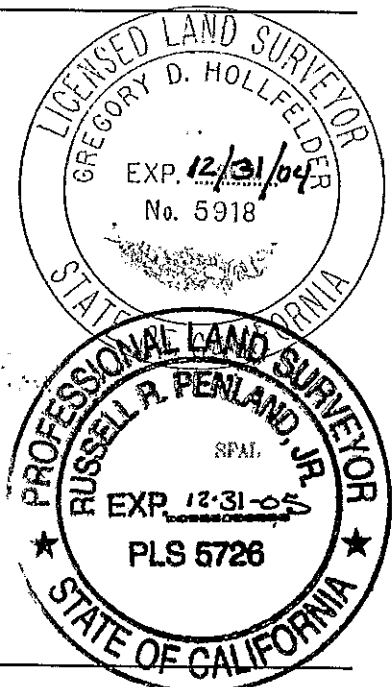
Signed Gregory D. Hollfelder L.S. or R.C.E. Number 5918

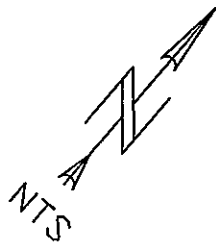
COUNTY SURVEYOR'S STATEMENT

This Corner Record was received 9-5 2003 and examined and filed 9-29 2003.

Signed Russell R. Penland, Jr. Title County Surveyor

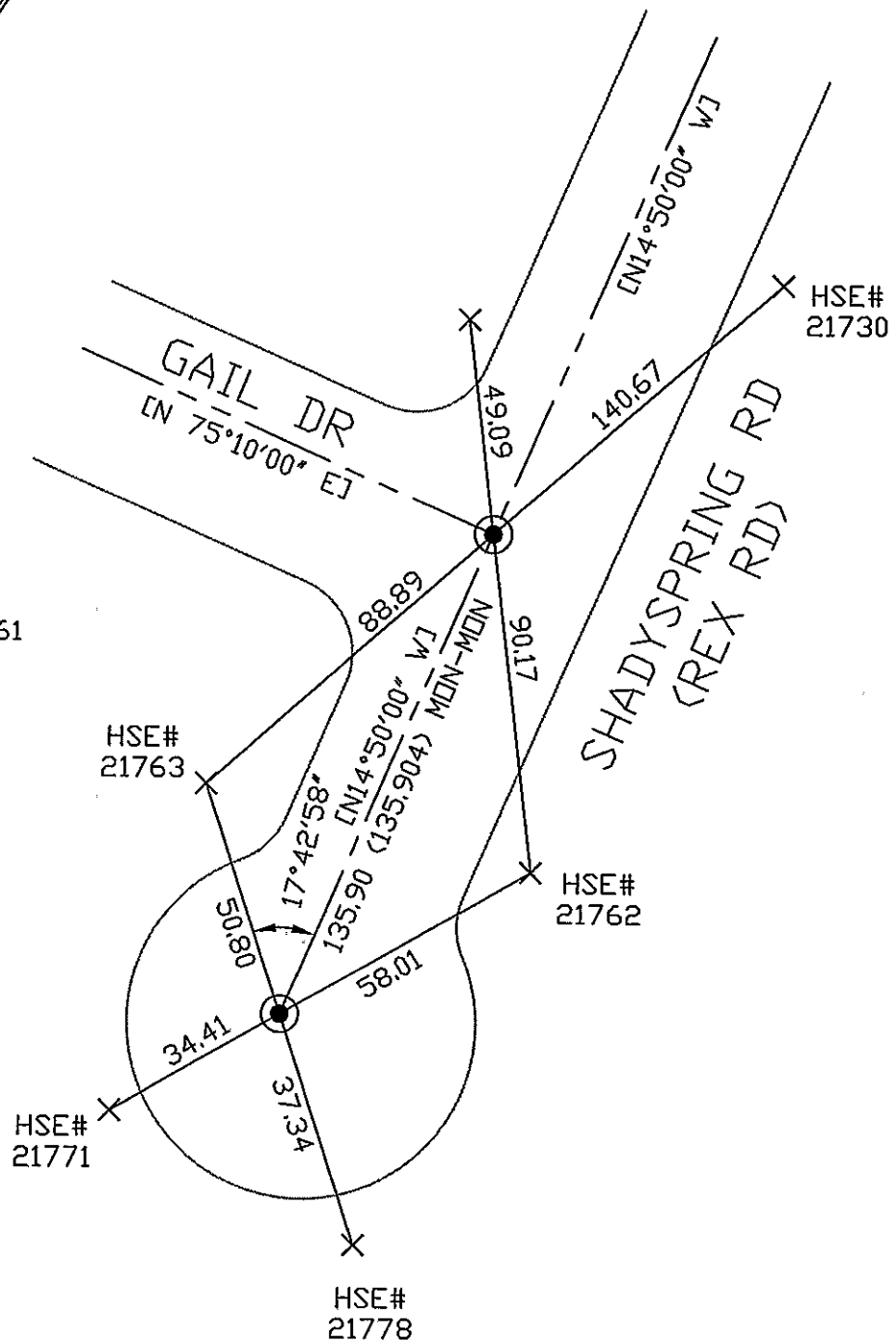
County Surveyor's Comment _____





REFERENCE:

TRACT 2356, 46M60&61



LEGEND:

● FOUND CONCRETE MONUMENT

× SET SCRIBED CROSS

(XX) RECORD DISTANCE IN DISCREPANCY

[XX] NON-VERIFIED RECORD DIMENSION