

TRACT 7626  
CANDY RANCH

A TOWNHOUSE DEVELOPMENT

BEING A PORTION OF LOTS 71 AND 72 AS SHOWN  
ON THAT CERTAIN MAP ENTITLED "MORGAN HILL RANCH  
MAP NO. 3", FILED IN BOOK "G" OF MAPS, AT PAGES  
20 AND 21, SANTA CLARA COUNTY RECORDS.

CITY OF MORGAN HILL, COUNTY OF SANTA CLARA, CALIF.

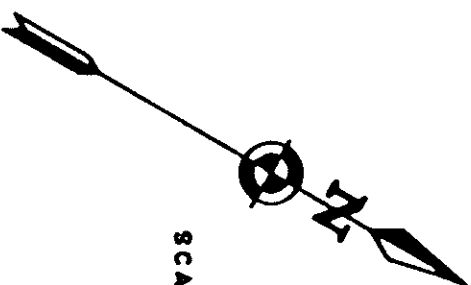
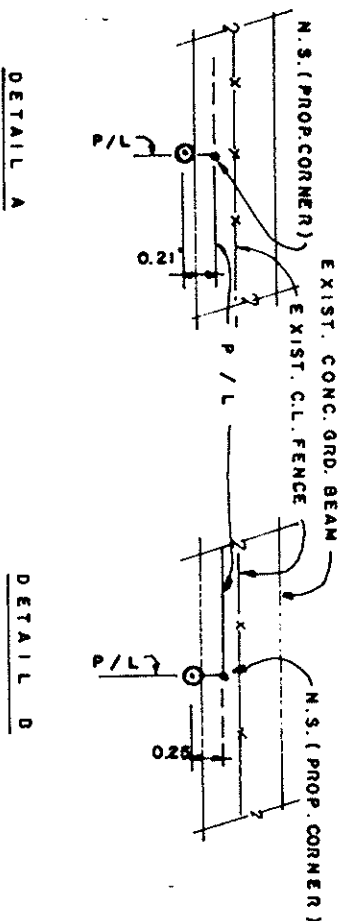
Scale : 1" = 20'

April , 1964

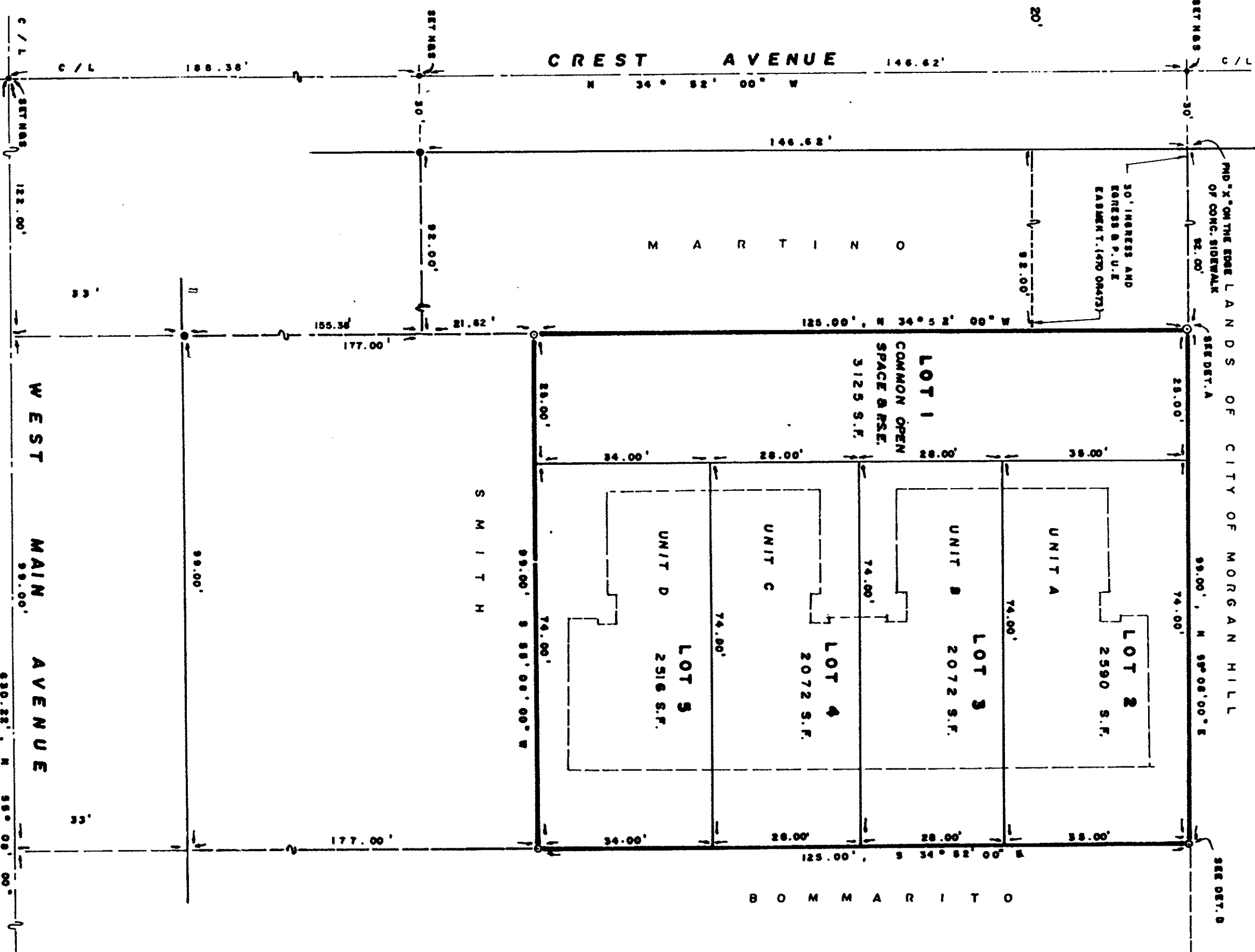
Consisting of two sheets

I.H. ERBIL / CIVIL ENGINEER

93 BLAKE AVE., SANTA CLARA, CALIF. 95051



SCALE: 1" = 20'



LEGEND

- Indicates Found City Standard Monument
- Indicates Found 1" Iron Pipe
- ⊙ Indicates Set 1" Iron Pipe
- N&S Indicates Set Nail and Shiner
- Distinctive border
- P.S.E. Public Service Easement
- P.U.E. Public Utility Easement

NOTES

- All unit and boundary lines of Lots 1, 2, 3 & 4 are parallel to or are at right angles to N 55° 08' 00" E, Unless otherwise noted
- Floor plans for Units A, B, C, & D are on file with the City of Morgan Hill, File No. FD-84-01

BASIS OF BEARING

The bearing N 55° 08' 00" E of the centerline of West Main Avenue as shown on that certain map entitled "MAP OF THE FAIRVIEW PARK ADDITION TO MORGAN HILL" filed in Book 1 of Maps, at page 33, Santa Clara County Records was taken as the basis of bearings for this map.

