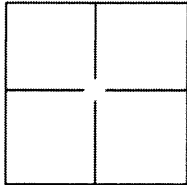


CORNER RECORD

BK 87 PG 72Document Number CR 9189City of BERKELEYCounty of ALAMEDA, CaliforniaBrief Legal Description MONUMENTS MARKING THE INTERSECTION OF 7TH AVENUE AND POTTER STREET ALONG WITH THE INTERSECTION OF 7TH AVENUE AND MURRAY STREET**CORNER TYPE****COORDINATES(Optional)**Government Corner ☐Control ☐Meander ☐Property ☐Rancho ☐Other ☒

N. _____

E. _____

Zone _____ NAD27 ☐ NAD83 ☐

NAD83 Epoch _____

Elevation _____

Vert. Datum: NGVD29 ☐ NAV88 ☐Meas. Units: Metric ☐ Imperial ☐Date of Survey OCTOBER 26, 2016**Corner -**Left as found ☒Found and tagged ☐Established ☐Reestablished ☐Rebuilt ☐

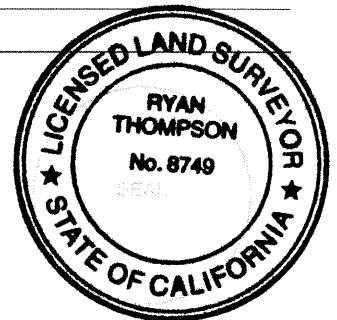
Identification and type of corner found: Evidence used to identify or procedure used to establish or reestablish the corner:

INTERSECTION MONUMENT WELLS. SET CHISELED CROSSES FOR REFERENCE AND RE-ESTABLISHMENT IF NECESSARY. LOCATIONS AND DISTANCES ARE SHOWN ON THE ATTACHED EXHIBIT.IN COMPLIANCE WITH SECTION 8771 OF THE PROFESSIONAL LAND SURVEYORS ACT, THIS CORNER RECORD IS BEING FILED PRIOR TO A STREET IMPROVEMENT PROJECT.

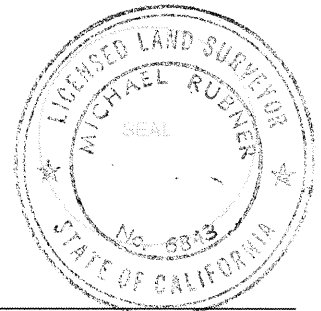
A description of the physical condition of the monument as found and as set or reset: _____

THE MONUMENTS WERE LEFT AS IS, THEY ARE BOTH A BRONZE PIN SET IN CONCRETE ENCASED INSIDE A MONUMENT WELL.**SURVEYOR'S STATEMENT**

This Corner Record was prepared by me or under my direction in conformance with

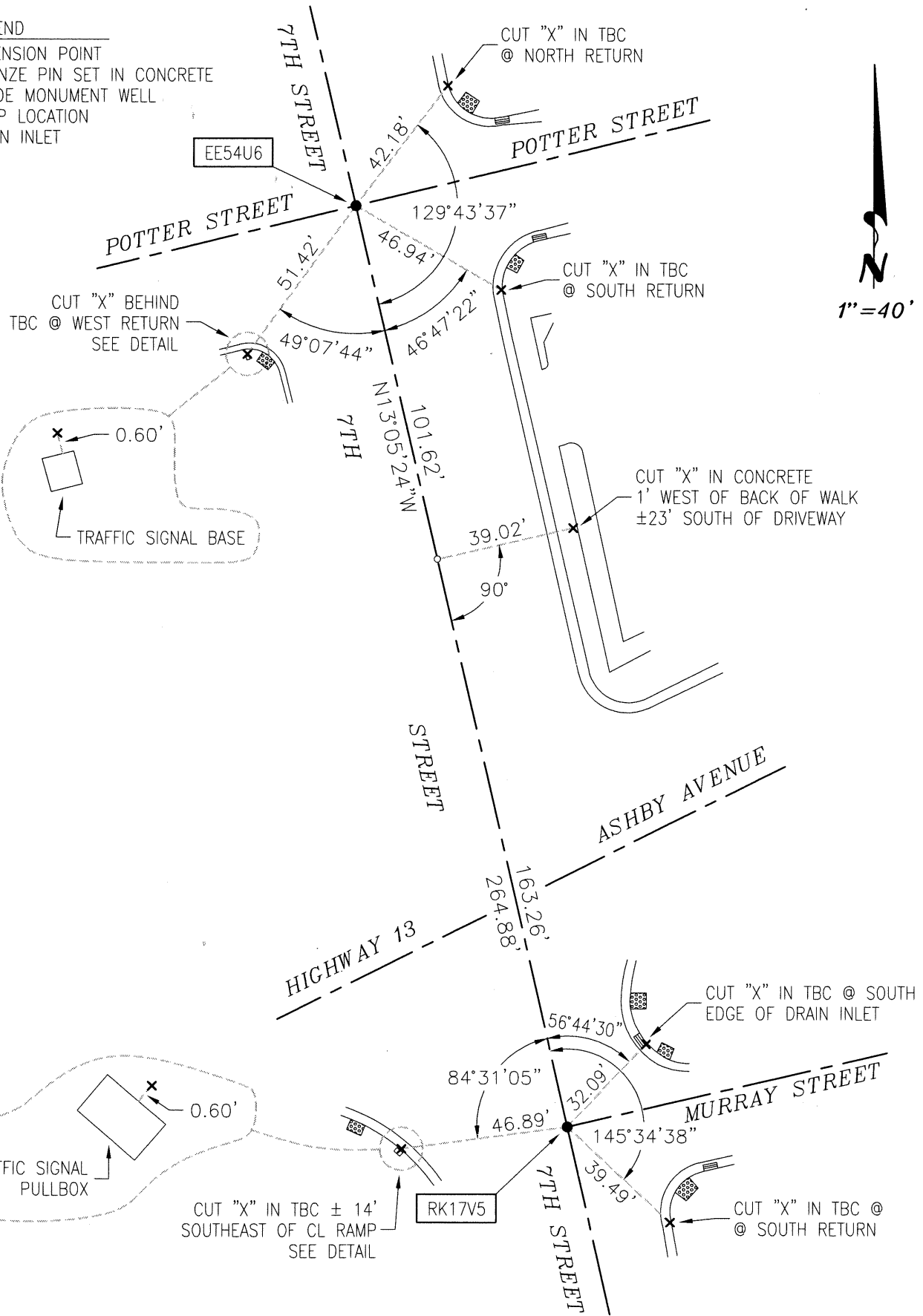
the Professional Land Surveyor's Act on OCTOBER 28 2016Signed RYAN THOMPSON P.L.S. or R.C.E. Number L.S. 8749**COUNTY SURVEYOR'S STATEMENT**This Corner Record was received 28 OCTOBER 2016 and examinedand filed 5 DECEMBER 2016Signed Michael Rubner P.L.S. or R.C.E. Number 6843Title COUNTY SURVEYOR

County Surveyor's Comment _____



LEGEND

- DIMENSION POINT
- BRONZE PIN SET IN CONCRETE INSIDE MONUMENT WELL
- ▣ RAMP LOCATION
- ▬ DRAIN INLET



PROJECT NO.

4166.007

SHEET 1 OF 1

7TH STREET BERKELEY

MAYBERRY TELECOM MONUMENT PRESERVATION

COUNTY OF ALAMEDA

CALIFORNIA

UNICO
ENGINEERING

110 BLUE RAVINE RD SUITE 101 | FOLSOM, CA 95630
PHONE: 800.277.6623 | unicoengineering.com