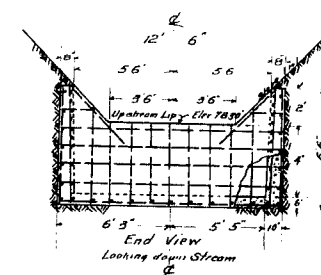
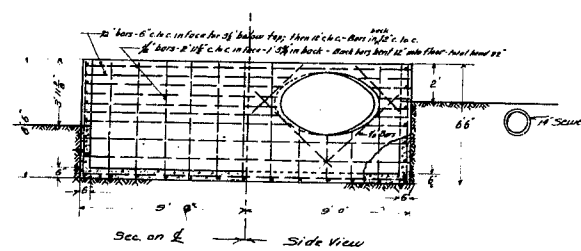
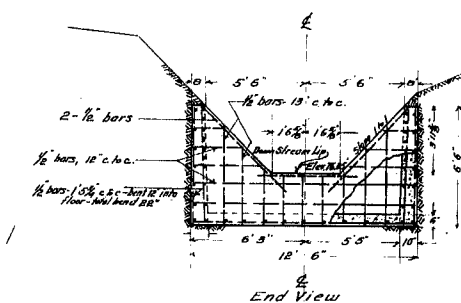
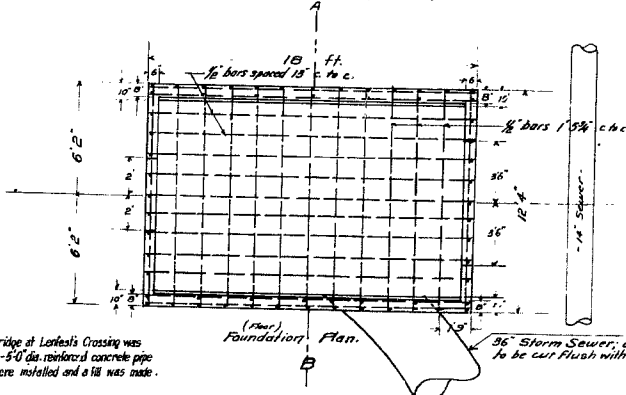


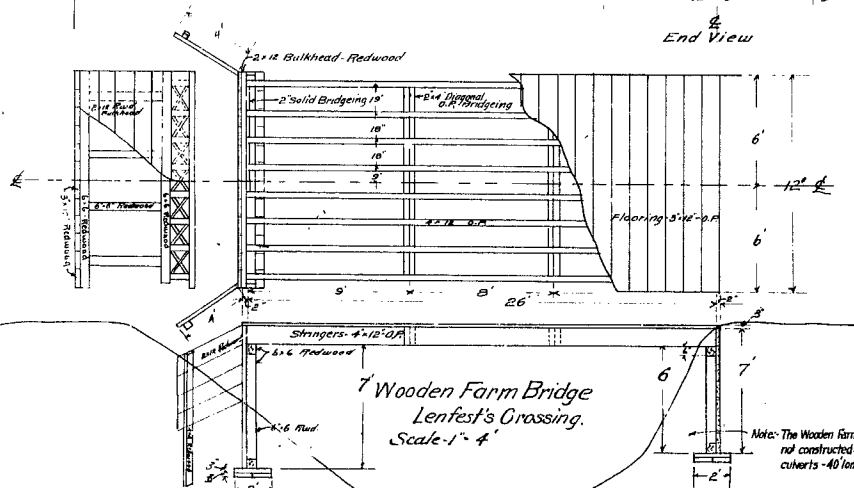
DETAIL FOR A  
REINFORCED CONCRETE MANHOLE  
AT THE INTERSECTION OF  
MCKEE ROAD WITH 39<sup>TH</sup> STREET  
ALL BARS SQUARE CORRUGATED.  
Concrete Mix 1:2 1/2:5



N.B. All reinforcing steel to be square corrugated bars.



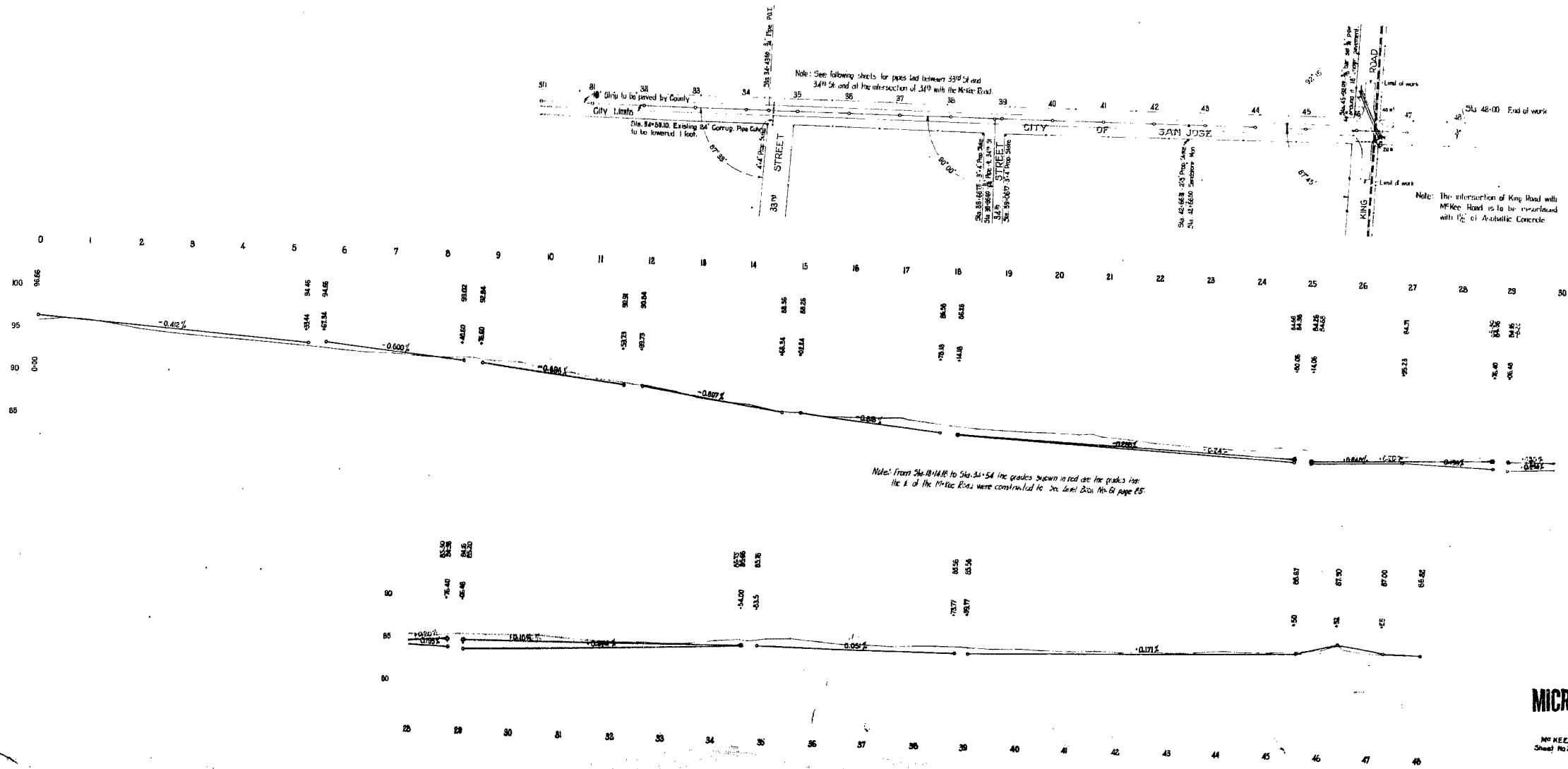
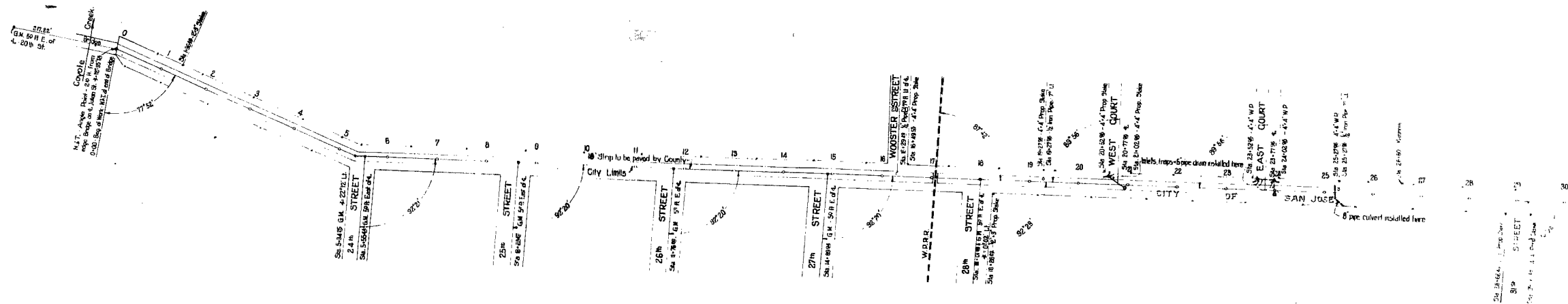
Concrete Drop at Sta. 26+00  
Scale: 1" = 4'  
Concrete Mix - 1:2:4



Note: The Wooden Farm Bridge at Lenfest's Crossing was not constructed. 2-5'0" dia. reinforced concrete pipe culverts - 40' long were installed and a fill was made.

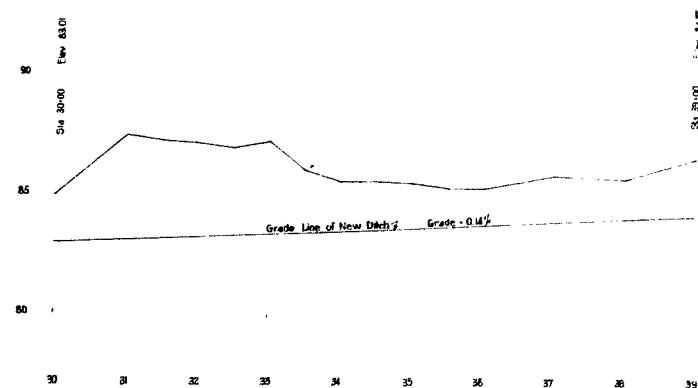
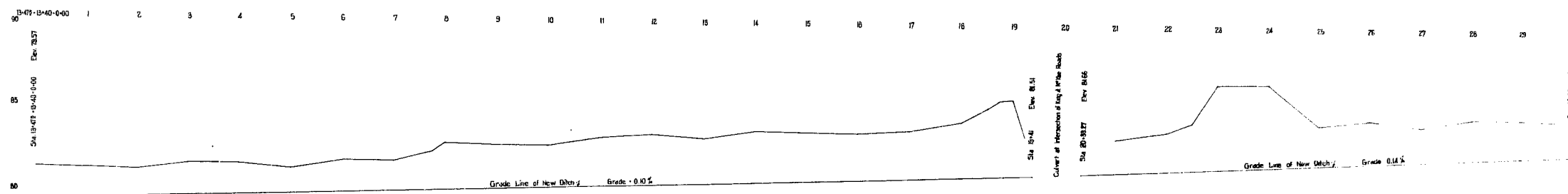
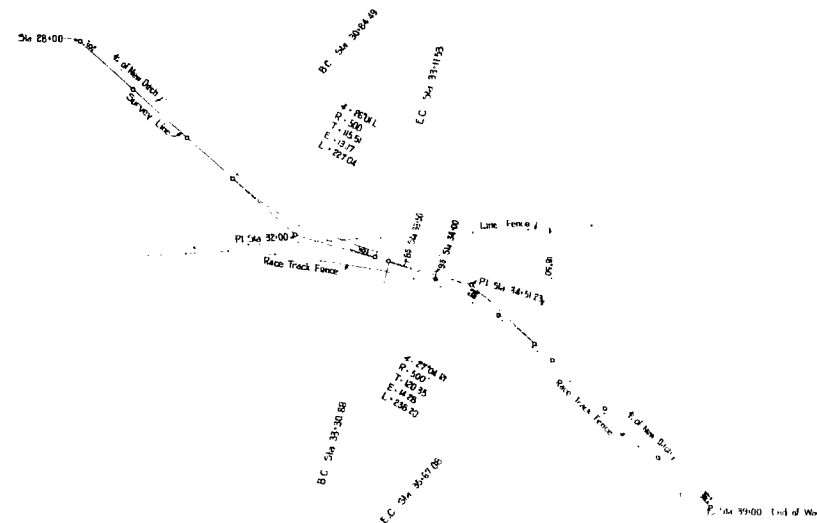
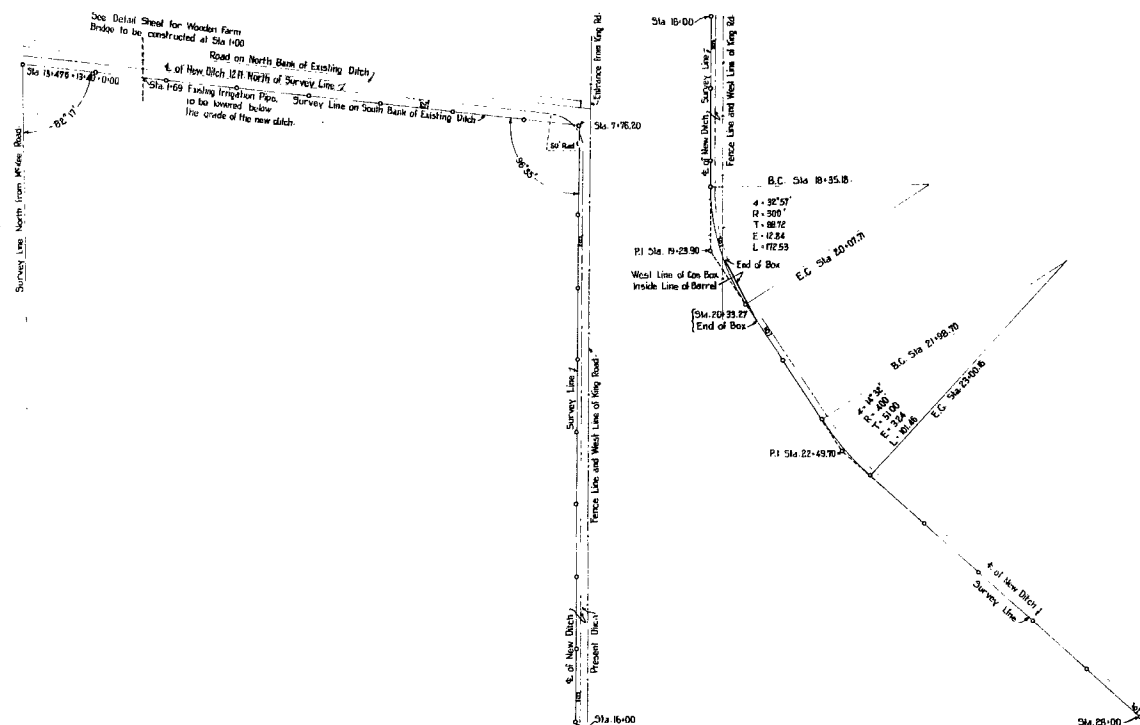
DETAIL SHEET  
FOR  
MCKEE ROAD DRAINAGE  
Sheet No. 3 of 8 Sheets

MICROFILM



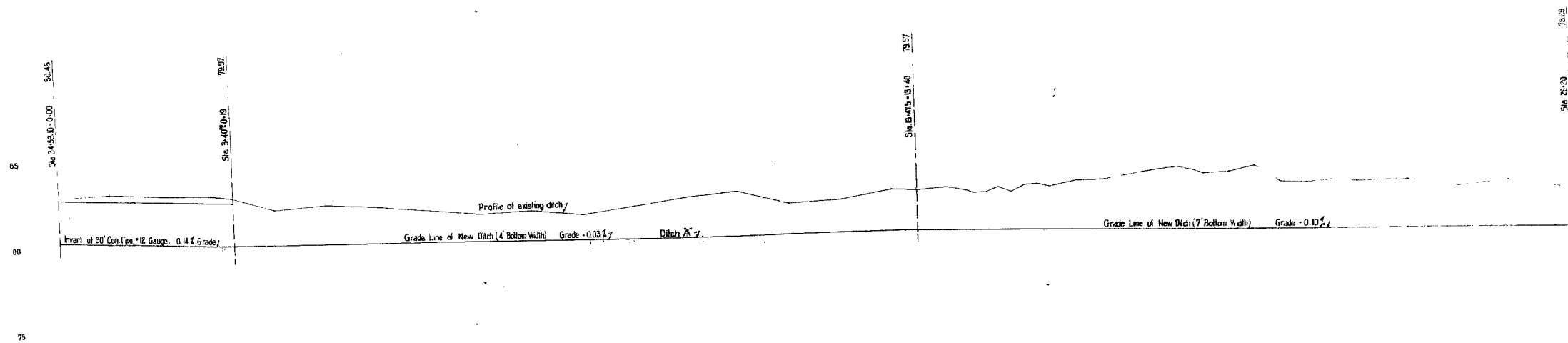
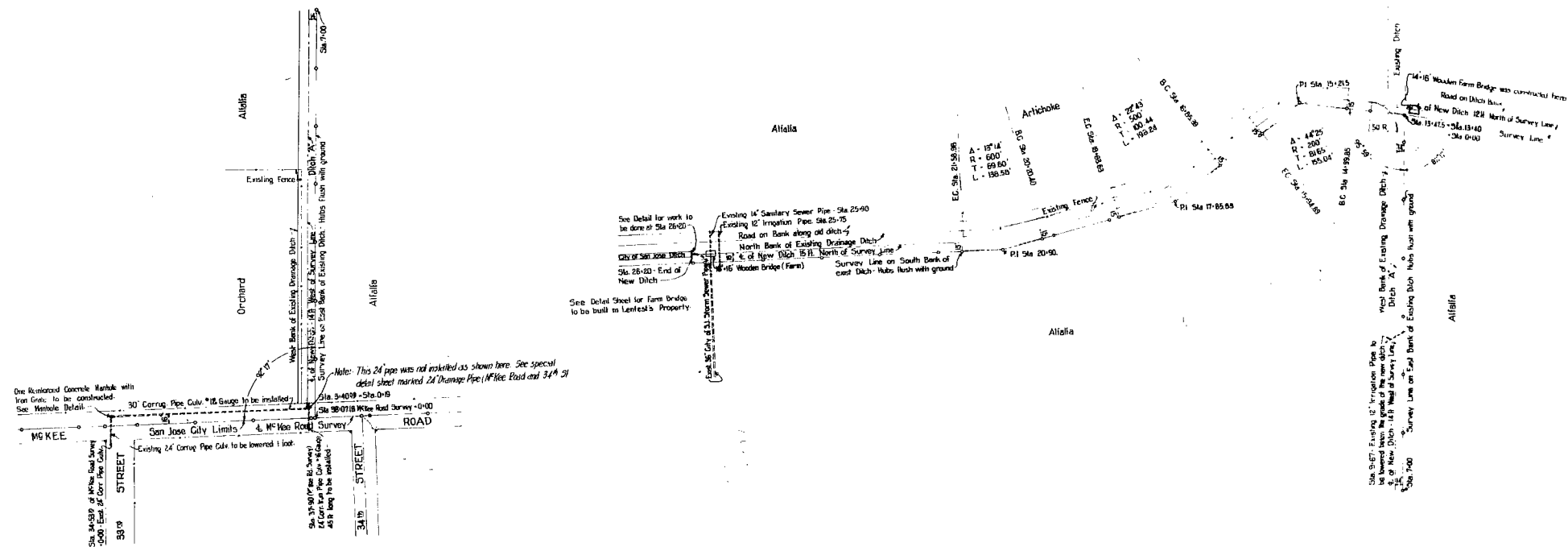
MICROFILM

Mc KEE ROAD  
Sheet No. 2 of 3 Sheets



MICROFILM

MS 41 F. ROAD DRAINAGE  
Sheet No 2 of 5 Sheets



MICROFILM

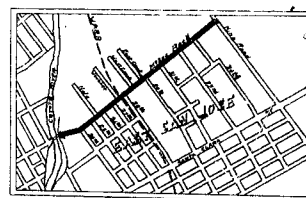
Mc KEE ROAD DRAINAGE  
Sheet No. 1 of 5 Sheets

AMENDED  
PLANS  
FOR THE IMPROVEMENT OF  
MCKEE ROAD  
IN  
SUPERVISOR DISTRICT N° 3

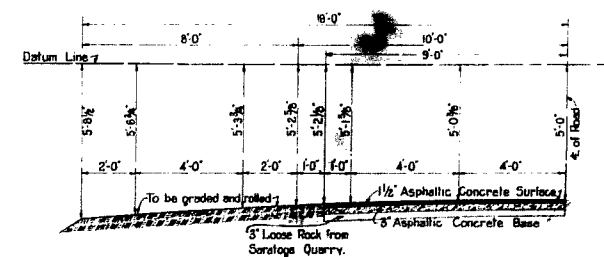
October, 1926

ROBERT B. CHANDLER  
County Surveyor.

SCALES  
PLAN: 1" = 100'  
PROFILE { Hor: 1" = 100'  
          { Ver: 1" = 6'  
SECTIONS 1" = 5'



INDEX MAP



HALF TYPICAL Cross Section  
Scale: 1/2" = 1'

MICROFILM

