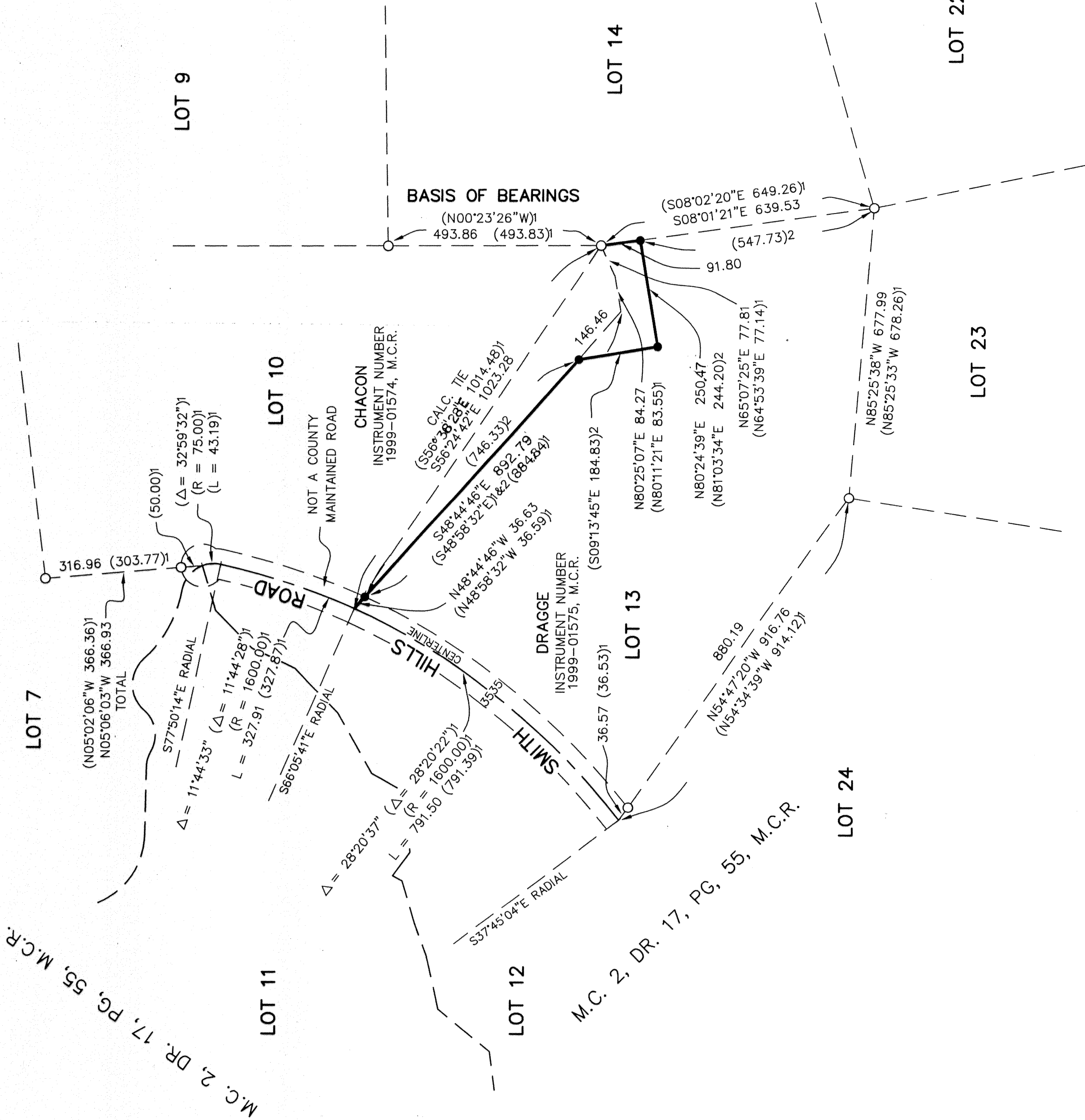


M.C. 2, DR. 17, PG. 55, M.C.R.



LEGEND

- = 1/2" PIPE WITH A PLASTIC PLUG STAMPED R.C.E. 21908, SET THIS SURVEY.
- = FOUND 1/2" PIPE AS SHOWN ON A MAP FILED IN MAP CASE 2, DRAWER 17, PAGE 55, M.C.R.
- = RECORD BEARINGS AND DISTANCES AGREE WITH THIS SURVEY UNLESS SHOWN OTHERWISE. RECORD DATA FROM:
 - 1. MAP CASE 2, DRAWER 17, PAGE 55, M.C.R.
 - 2. RECORD DATA PER INSTRUMENT NUMBER 1999-01574, M.C.R.

BASIS OF BEARINGS

NORTH 00°23'26"WEST, BETWEEN FOUND MONUMENTS AS SHOWN ON A MAP FILED IN MAP CASE 2, DRAWER 17, PAGE 55, M.C.R.

NOTES

- ALL DISTANCES SHOWN HEREON ARE IN FEET AND DECIMALS THEREOF.
- THIS MAP REPRESENTS A BOUNDARY LINE SURVEY ONLY AND DOES NOT SHOW RIGHTS OF WAY, EASEMENTS OR ENCROACHMENTS, OTHER THAN THOSE SHOWN.

RECORD OF SURVEY

FOR
ERIC ARBANOVELLA

BEING A PORTION OF SECTIONS 21
AND 22, T. 15 N., R. 15 W., M.D.M.

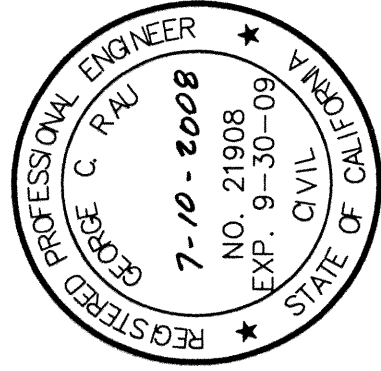
MENDOCINO COUNTY, CALIFORNIA
JULY, 2008



SURVEYOR'S STATEMENT

THIS MAP CORRECTLY REPRESENTS A SURVEY MADE BY ME OR UNDER MY DIRECTION IN CONFORMANCE WITH THE REQUIREMENTS OF THE PROFESSIONAL LAND SURVEYORS' ACT AT THE REQUEST OF ERIC ARBANOVELLA IN JULY, 2008.

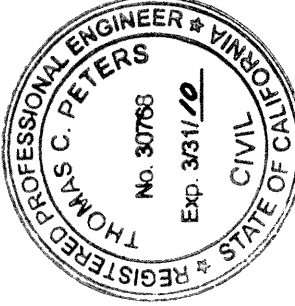
George C. Rau
GEORGE C. RAU
R.C.E. 21908
09/30/2009



COUNTY SURVEYOR'S STATEMENT

THIS MAP HAS BEEN EXAMINED IN ACCORDANCE WITH SECTION 8766 OF THE PROFESSIONAL LAND SURVEYORS' ACT THIS 10th DAY OF July, 2008.

By: Thomas C. Peters
ARTHUR W. COLVIN
L.S. 6112
J-31-2010



COUNTY SURVEYOR
COUNTY OF MENDOCINO, STATE OF CALIFORNIA

RECORDER'S STATEMENT

FILED THIS 14th DAY OF July, 2008 AT 11:14 AM
IN MAPS, DRAWER 16, PAGE 55, M.C.R.,
AT THE REQUEST OF GEORGE C. RAU.

SUSAN M. RANOGAJAC
ASSESSOR, COUNTY CLERK-RECORDER

BY: *Rileet Peters*, DEPUTY

#032- \$9.00 FEE

R08089

SURVEYED BY RAU AND ASSOCIATES, INC. UNIAH, CALIFORNIA

ONE SHEET ONLY

MAPS
DRAWER 16
PAGE 34

ROS 29-08