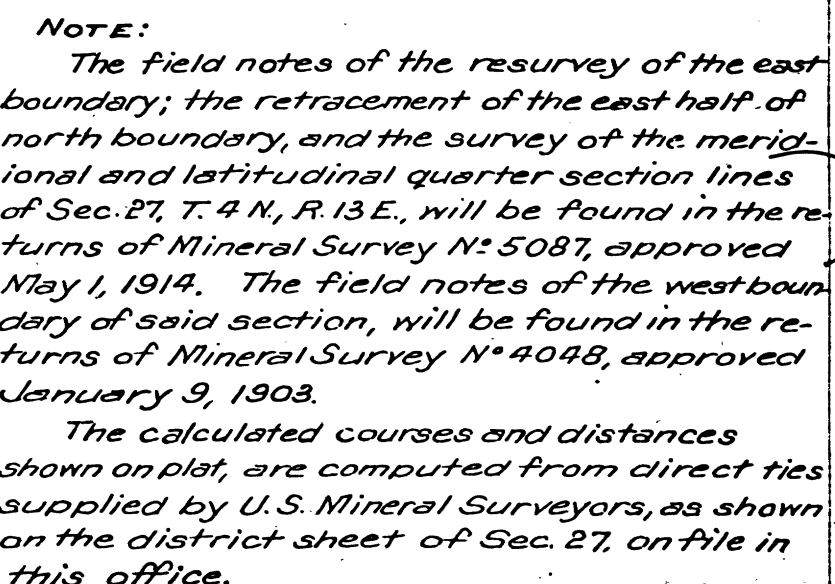


Scale: 10 chains = 1 inch

g Sec.6 Sec.5 Sec.4 Sec.3 Sec.2 Sec.1



Frank H. Lovell
U.S. Surveyor-General for California.

<i>Areas in Acres</i>	
<i>Public Land</i>	
<i>Indian Reservation</i>	
<i>Indian Allotments</i>	
<i>Mineral Claims</i>	
<i>Water Surface</i>	
<i>Total Area</i>	

[illegible]

Surveyor General.

T4N R13E MD

B1M 176