

SHEARWALL SCHEDULE				
TYPE	NAIL SPACING (EN&BN)	HOLDOWN	ANCHOR BOLTS	END POST THICKNESS UON
①	10d @ 3" O.C.	HDU14- SDS2.5	5/8" DIA @ 24" O.C.	6" MIN WOOD END POST THICKNESS
②	10d @ 3" O.C.	HDU14- SDS2.5	5/8" DIA @ 24" O.C.	6" MIN WOOD END POST THICKNESS
③	10d @ 4" O.C.	HDU8- SDS2.5	5/8" DIA @ 36" O.C.	4 1/2" MIN WOOD END POST THICKNESS

(X) - DESIGNATES SHEARWALL TYPE

NOTES:

1. USE 10d COMMON NAILS.
2. NAIL PANEL FACES @ 12" O.C. - FN
3. USE 1/2" PLYWOOD.
4. STAGGER PLYWOOD JOINT AND SILL PLATE NAILING.
5. FRAMING MEMBERS OR BLOCKING SHALL BE PROVIDED AT THE EDGES OF ALL SHEETS IN SHEARWALLS.
6. REFER TO 9/S-200 FOR HOLD DOWN ANCHOR EMBEDMENT.

7. HOLD DOWN ANCHORS MUST BE TIED IN PLACE PRIOR TO FOUNDATION INSPECTION.
8. FRAMING AT ADJOINING PANEL EDGES SHALL BE 3 INCH NOMINAL OR THICKER AND NAILS SHALL BE STAGGERED WHERE NAILS ARE SPACED AT 3" O.C. OR ARE ON EACH FACE.
9. FN INDICATES FIELD NAILING
EN INDICATES EDGE NAILING
BN INDICATES BOUNDARY NAILING

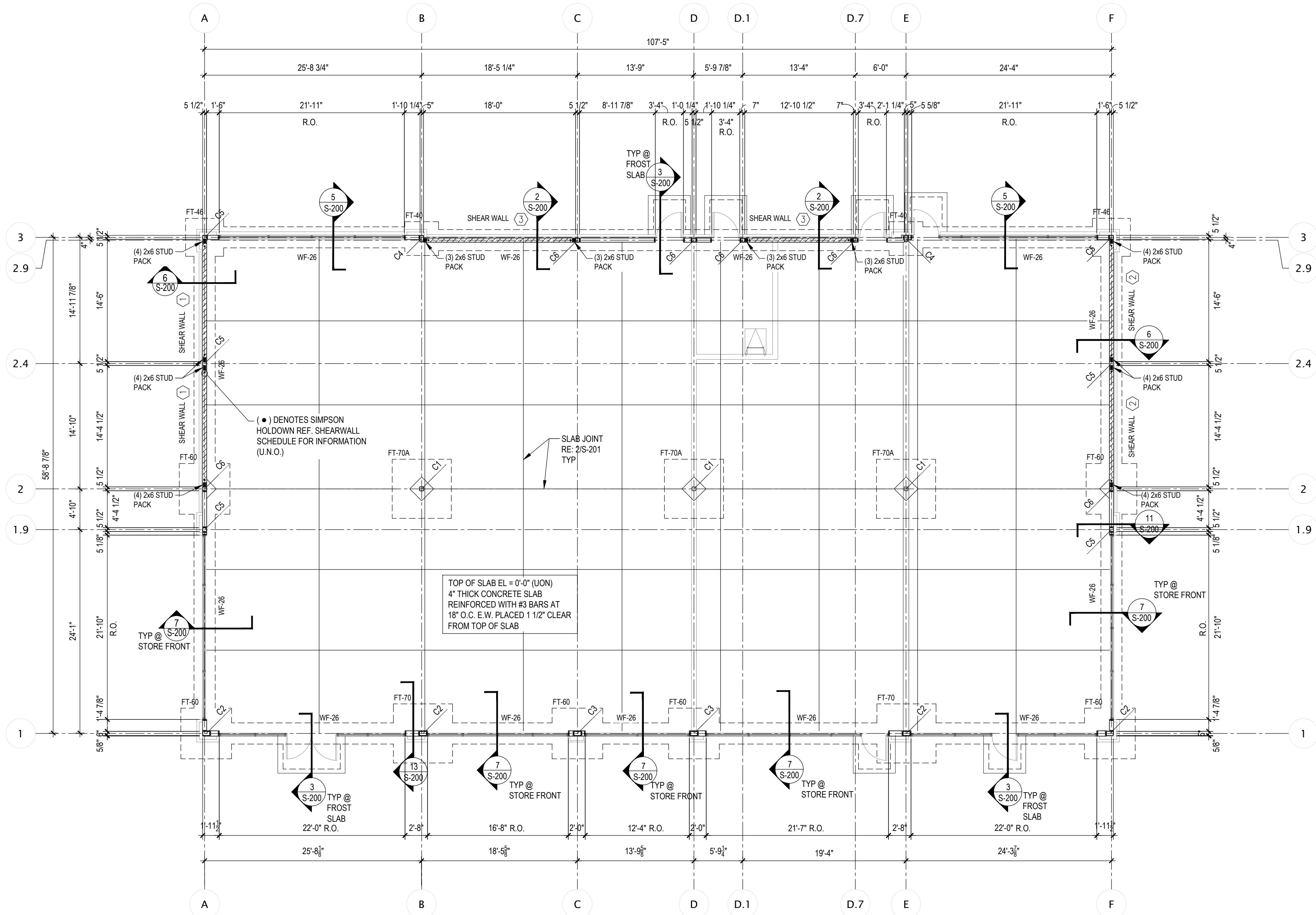
PLAN NOTES

1. REF. SHEET S-000 FOR STRUCTURAL NOTES AND SPECIAL INSPECTIONS.
2. REF. 3/S-201 FOR TYPICAL PIPE DETAIL AS REQUIRED.
3. REF. 4/S-201 FOR TYPICAL SILL PLATE BOLT DETAIL AS REQUIRED.
4. REF. 8/S-200 FOR TYPICAL GRADE BEAM/WALL FOOTING STIRRUP DETAIL AS REQUIRED.
5. REF. 7/S-201 FOR TYPICAL REINFORCING BAR DETAIL AS REQUIRED.
6. REF. 8/S-201 FOR TYPICAL CORNER BAR DETAIL AS REQUIRED.
7. REF. 14/S-200 FOR TYPICAL NON BEARING WALL CONNECTION AT SLAB AS REQUIRED.
8. REF. 8/S-301 FOR TYPICAL FRAMING NOTCHES DETAIL AS REQUIRED.
9. REF. 9/S-301 FOR TYPICAL WALL FRAMING DETAILS AS REQUIRED.
10. REF. 4/S-200 FOR TYPICAL TRASH ENCLOSURE DETAIL AS REQUIRED.
11. REF. S-101 FOR COLUMN BASE PLATE DETAIL.
12. REF TO GEOTECHNICAL REPORT FOR SITE PREPARATION.

COLUMN OFFSETS 4
NO SCALE S-101

SHEAR WALL SCHEDULE AND NOTES 3
Scale: NO SCALE S-101

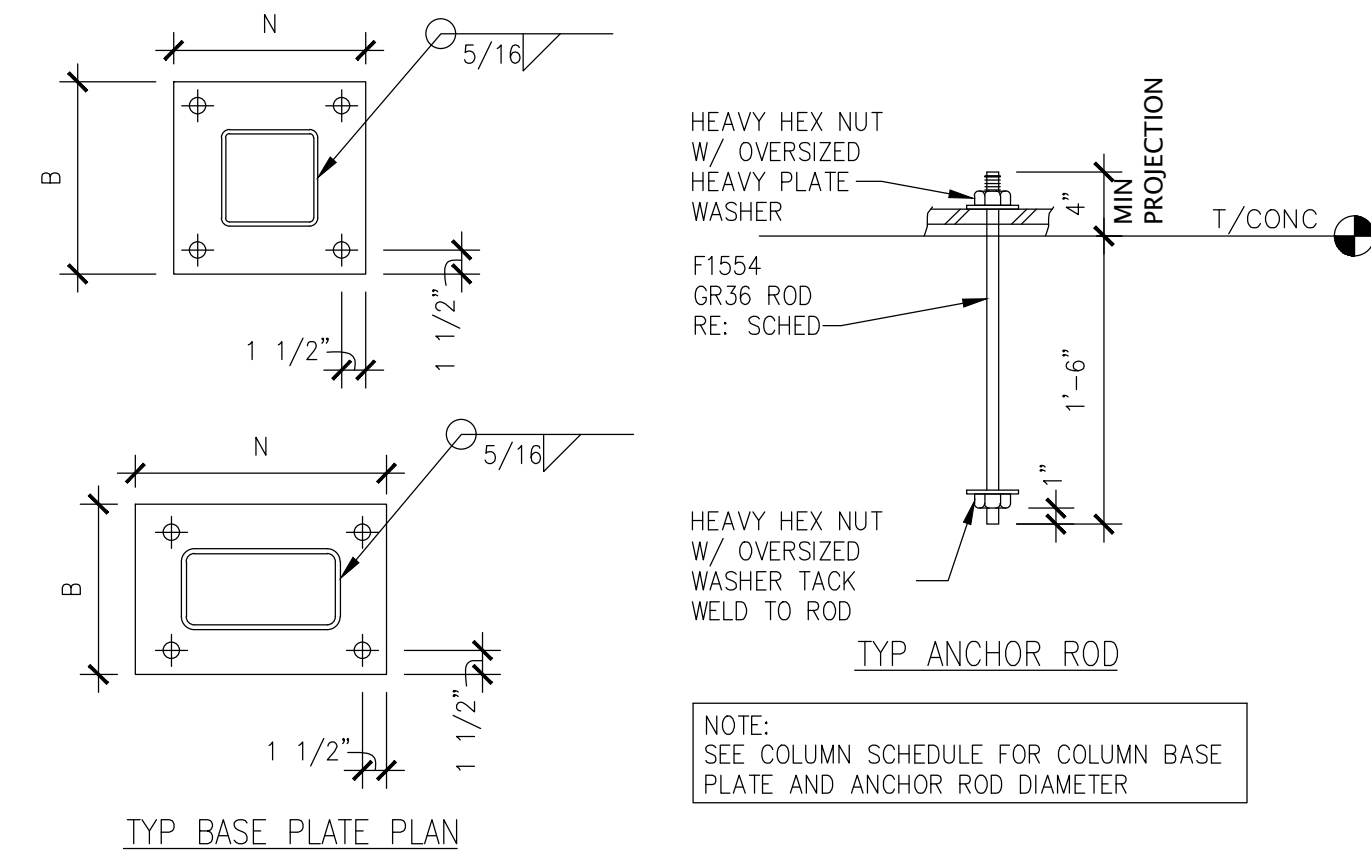
FOUNDATION NOTES 2
Scale: NO SCALE S-101



STRUCTURAL STEEL COLUMN SCHEDULE

MARK	SIZE	BASE PLATE (1x B x N)	CAP PLATE (1)	ANCHOR RODS	B/ELEVATION	T/ELEVATION
C1	HSS6x6x5/16	3/4" x 12" x 12"	1/2"	(4) 3/4" DIA	-0'-6 1/2"	15'-9"
C2	HSS10x6x5/16	3/4" x 16" x 12"	1/2"	(4) 3/4" DIA	-0'-6 1/2"	23'-5 1/2"
C3	HSS10x6x5/16	3/4" x 16" x 12"	1/2"	(4) 3/4" DIA	-0'-6 1/2"	21'-3 1/2"
C4	HSS9x5x5/16	3/4" x 15" x 11"	1/2"	(4) 3/4" DIA	-0'-6 1/2"	23'-5 1/2"
C5	HSS5 1/2x5 1/2x5/16	3/4" x 12" x 12"	1/2"	(4) 3/4" DIA	-0'-6 1/2"	23'-5 1/2"
C6	HSS5 1/2x5 1/2x5/16	3/4" x 12" x 12"	1/2"	(4) 3/4" DIA	-0'-6 1/2"	21'-3 1/2"

- NOTES:
1. BOTTOM ELEVATION REFERS TO BOTTOM OF BASE PLATE ELEVATION BASED ON 1 1/2" NON-SHRINK SOLID GROUT BENEATH THE BP.
 2. TOP ELEVATION REFERS TO TOP OF CAP PLATE OF THE STEEL COLUMN.
 3. FOR ANCHOR ROD EMBEDMENT REFER TO TYP ANCHOR ROD DETAIL.



COLUMN FOOTING SCHEDULE

MARK	LENGTH	WIDTH	DEPTH	REINFORCEMENT
FT-40	4'-0"	4'-0"	2'-6"	(6) #6 E.W. TOP & BOT
FT-46	4'-6"	4'-6"	2'-6"	(7) #6 E.W. TOP & BOT
FT-60	6'-0"	6'-0"	2'-6"	(9) #6 E.W. TOP & BOT
FT-70	7'-0"	7'-0"	2'-6"	(11) #6 E.W. TOP & BOT
FT-70A	7'-0"	7'-0"	1'-6"	(7) #6 E.W. TOP & BOT

WALL FOOTING SCHEDULE

MARK	WIDTH	DEPTH	REINFORCEMENT
WF-26	2'-6"	2'-6"	(3) #6 TOP & BOT W/ #4 TIES @ 16" O.C.

- NOTES:
1. TOP OF FOOTING ELEVATION -0'-8" BELOW F.F.

FOUNDATION PLAN 1
Scale= 1/8" = 1'-0" S-101



CFT NV DEVELOPMENT, LLC.

1120 N. Town Center Dr., Suite 150
Las Vegas, Nevada 89144

Telephone: 626.372.8425
Facsimile: 626.372.8288

All ideas, designs, arrangement and plans indicated or represented by this drawing are the property of CFT Development, LLC. and were created for use on this specific project. None of these ideas, designs, arrangements or plans may be used by or disclosed to any person, firm, or corporation without the written permission of CFT Development, LLC.

REVISIONS:

ISSUE DATE:

BIDS 2-10-23

DRAWN BY: DWG

CFT PROJECT #: 1241

ARCH PROJECT #: JCdT22004700

NORR
ARCHITECTS ENGINEERS PLANNERS

BUILDING B - (SHELL ONLY)
MULTI-TENANT (3 UNITS)

N. PRINCE FREDERICK BLVD & TRASKERS BLVD.
PRINCE FREDERICK, MD 20678

S-101

FOUNDATION PLAN

CFT MULTI-TENANT (3 UNITS)