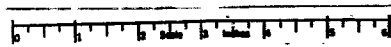


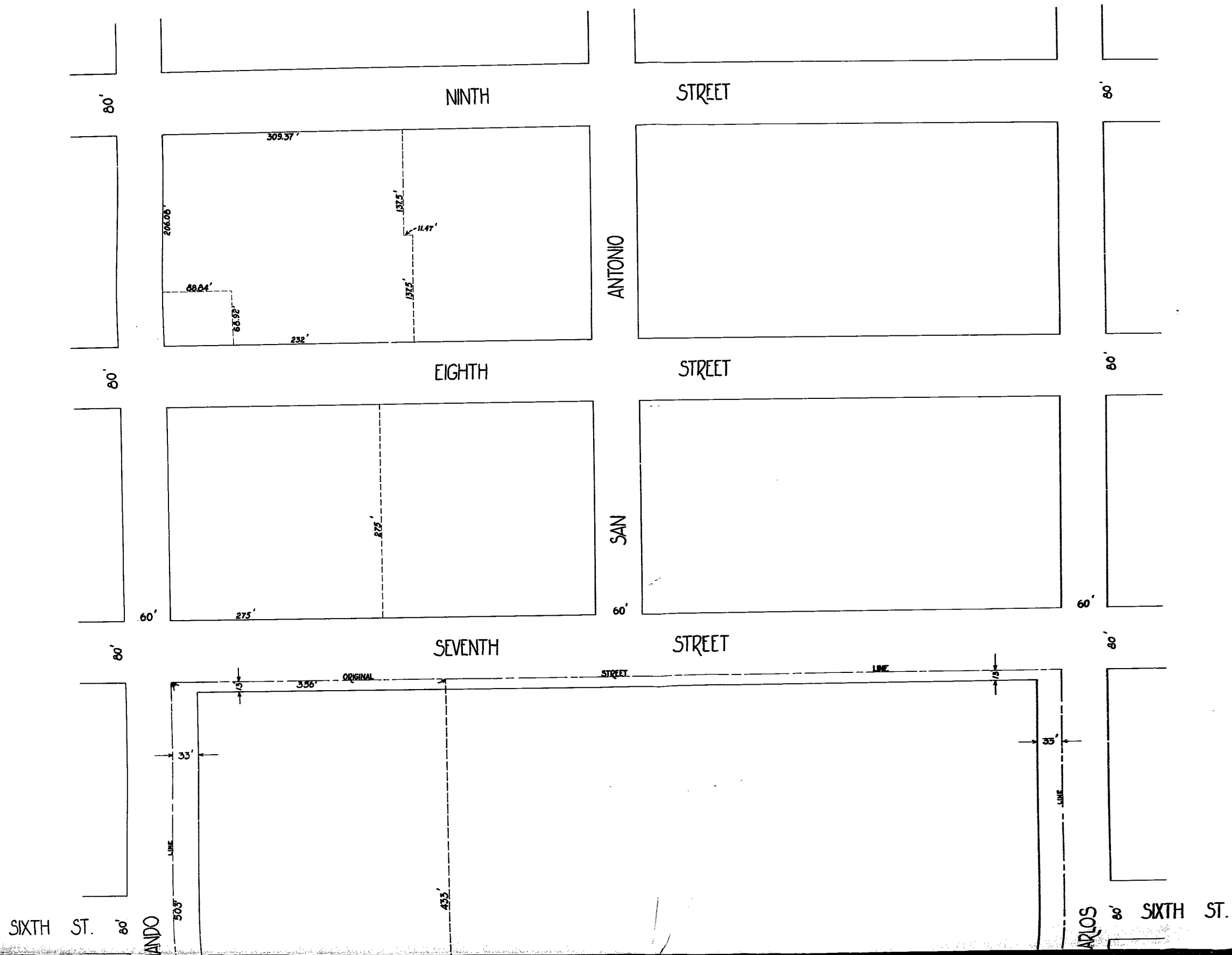


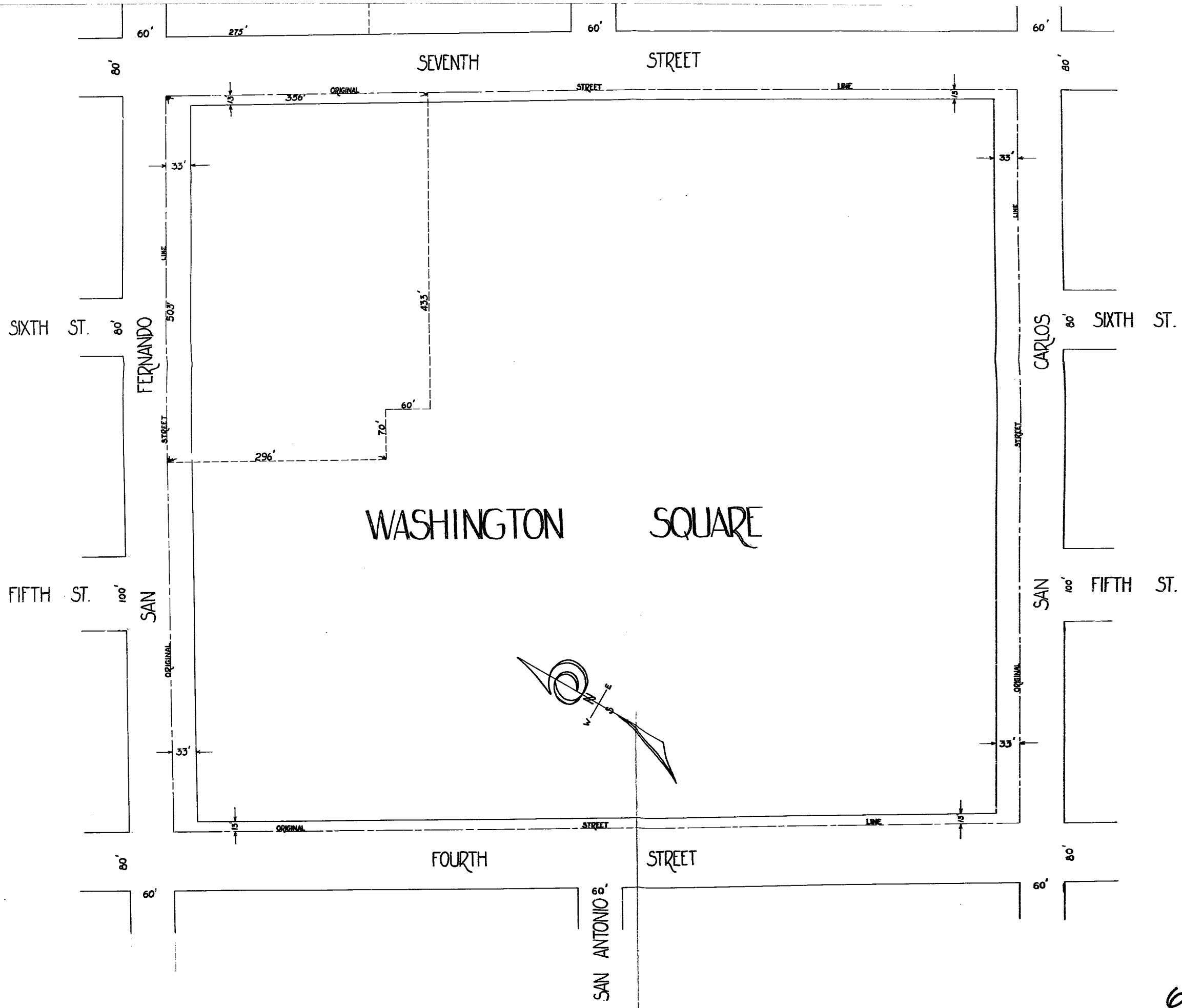
607-A

*Map
of the subdivision of the
Hyde Tract part of the
Rincon de las Esteros Rancho
Surveyed and Subdivided
March 1855 -
By John Connel
Scale 1 inch to 100 feet
Surveyors & Co.*

Map
of the subdivision of the
Hyde Tract part of the
Rincon de las Esteras Rancho
Surveyed and Subdivided
March 1855 -
By John Conover
Scale 1 inch to 1 mile







608

608