

R  
1  
4  
7

84/52

# AMENDED PARCEL MAP

## 845

CONSISTING OF ONE SHEET  
BEING A PORTION OF LOT 29  
HALL RANCH SUBDIVISION  
CITY OF UNION CITY  
ALAMEDA COUNTY, CALIFORNIA

SCALE: 1" = 40'

AUGUST, 1974

### SURVEYOR'S CERTIFICATE

This map was prepared by me or under my direction and is based upon a field survey in conformance with the requirements of the Subdivision Map Act of the State of California. In August, 1974, I hereby certify that it conforms to the approved tentative map and the conditions of approval thereof; that all provisions of applicable State Law and local ordinances have been complied with.

This is to certify that this amended map of Parcel Map 845 consisting of one sheet has been prepared for the purpose of showing the corrected lines along Alvarado Boulevard. Parcel Map 845 was recorded December 7, 1972 in Book 76 of Maps at Page 77, Series No. 72-165295 and addition of Storm Drain Easement recording data.

JAMES H. MCGOY

*James H. McGoy*  
RCE CERT. NO. 15933

### CITY ENGINEER'S CERTIFICATE

This map has been examined this 13<sup>th</sup> day of August, 1974 for conformance with the requirements of Section 11575 of the Subdivision Map Act.

City Engineer

RCE CERT. NO. 21001

### COUNTY RECORDER'S CERTIFICATE

File No. 74-132093 Fee, Five Dollars Paid.  
Filed this 11<sup>th</sup> day of OCTOBER, 1974 at 9:45 P.M. in Book 84 of Maps at Page 52 at the request of Mackay & Somp.

JACK BLUE, County Recorder.

By *Jenna J. Belardi* DEPUTY

14D 44D

### NOTES AND LEGEND

The blue border line indicates the boundary of land included within this map. The area within the blue border line is 4.069 ± ACRES.

All distances and dimensions are shown in feet and decimals thereof.

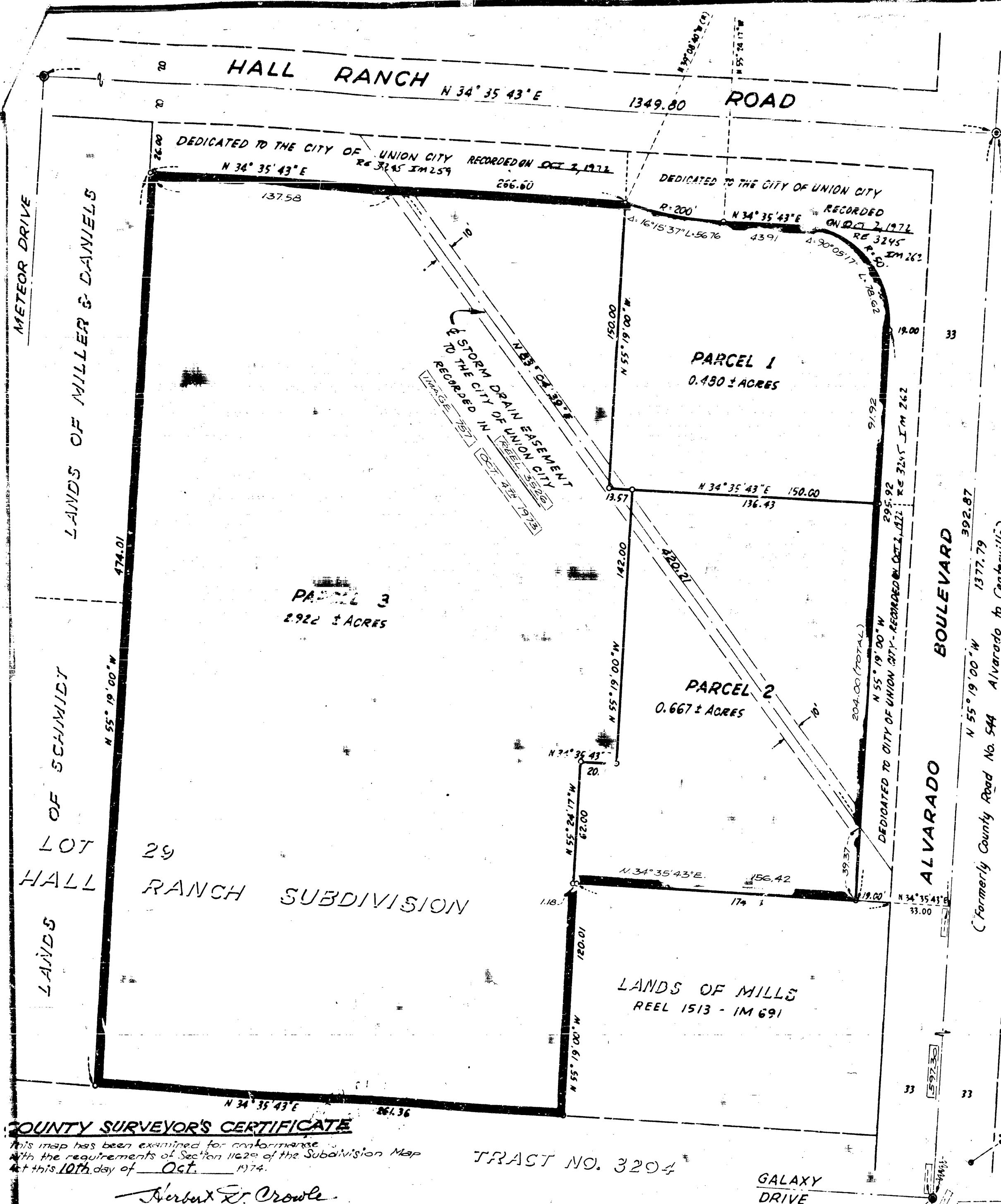
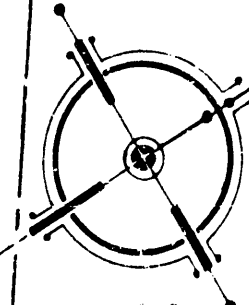
- Indicates a 3/4" iron pipe monument found unless noted otherwise.
- Indicates a 3/4" iron pipe monument set.
- Indicates a Standard City monument found.

— Indicates addition  
--- Indicates incorrect tie arrow.

### BASIS OF BEARINGS

The bearing, N. 55° 19' 00" W. of the southwesterly line of Alvarado Boulevard, (County Road No. 544), as said Boulevard is shown upon that certain map entitled "Map of Subdivision of Hall Ranch, etc." filed in Book 3 of Maps at Page 64 in the office of the County Recorder of the County of Alameda, State of California, was taken as the basis of bearings shown upon this map.

★ USE WITH CAUTION ★  
THIS IS A PUBLIC WORKS DEPARTMENT  
OFFICE FILE IN THE OFFICE OF THE COUNTY  
RECORDER, COUNTY OF ALAMEDA. OF  
PRICE INFORMATION OR CALCULATIONS  
MAY HAVE BEEN ADDED HEREON.



### COUNTY SURVEYOR'S CERTIFICATE

This map has been examined for conformance with the requirements of Section 11620 of the Subdivision Map Act this 10<sup>th</sup> day of Oct. 1974.

*Herbert G. Crowe*  
Herbert G. Crowe, R.C.E. No. 6916

TRAST NO. 3204

25-K-13 SHEET 1 OF 1 SHEET

MACKAY & SOMPS • CIVIL ENGINEERS • UNION CITY, CALIFORNIA

19611

Map B/L 84 Pg 52 84/52

3 7 3

