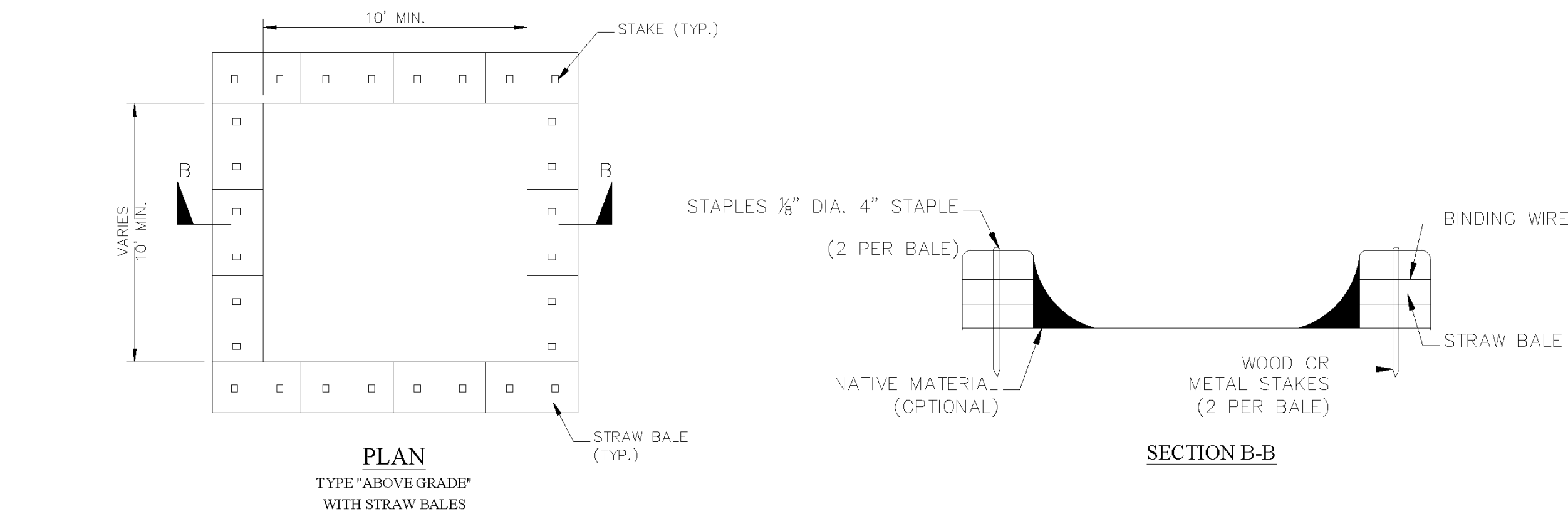


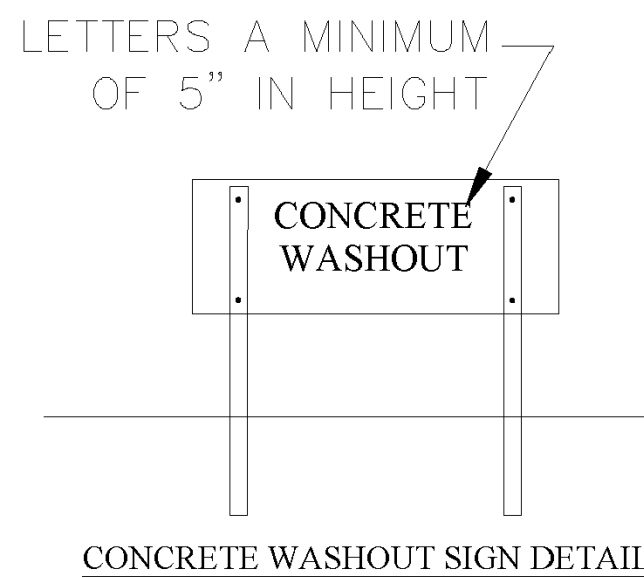
A:\130-000\130-610\CAD\DWG\DWG Construction Documents\130610-010-C900.dwg(C901) (5/14/2022 2:46 PM) - LP: 5/14/2022 2:46 PM

STRAW BALE BARRIER CONCRETE WASHOUT



NOTES:

1. ACTUAL LAYOUT DETERMINED IN FIELD.
2. INSTALL CONCRETE WASHOUT SIGN (24"x24", MINIMUM) WITHIN 30' OF THE TEMPORARY CONCRETE WASHOUT FACILITY.
3. TEMPORARY WASHOUT AREA MUST BE AT LEAST 50' FROM A STORM DRAIN, CREEK BANK OR PERIMETER CONTROL.
4. CLEAN OUT CONCRETE WASHOUT AREA WHEN 50% FULL.
5. THE KEY TO FUNCTIONAL CONCRETE WASHOUTS IS WEEKLY INSPECTIONS, ROUTINE MAINTENANCE, AND REGULAR CLEAN OUT.
6. SILT FENCE SHALL BE INSTALLED AROUND PERIMETER OF CONCRETE WASHOUT AREA EXCEPT FOR THE SIDE UTILIZED FOR ACCESSING THE WASHOUT.
7. A ROCK CONSTRUCTION ENTRANCE MAY BE NECESSARY ALONG ONE SIDE OF THE WASHOUT TO PROVIDE VEHICLE ACCESS.



South Carolina Department of Health and Environmental Control

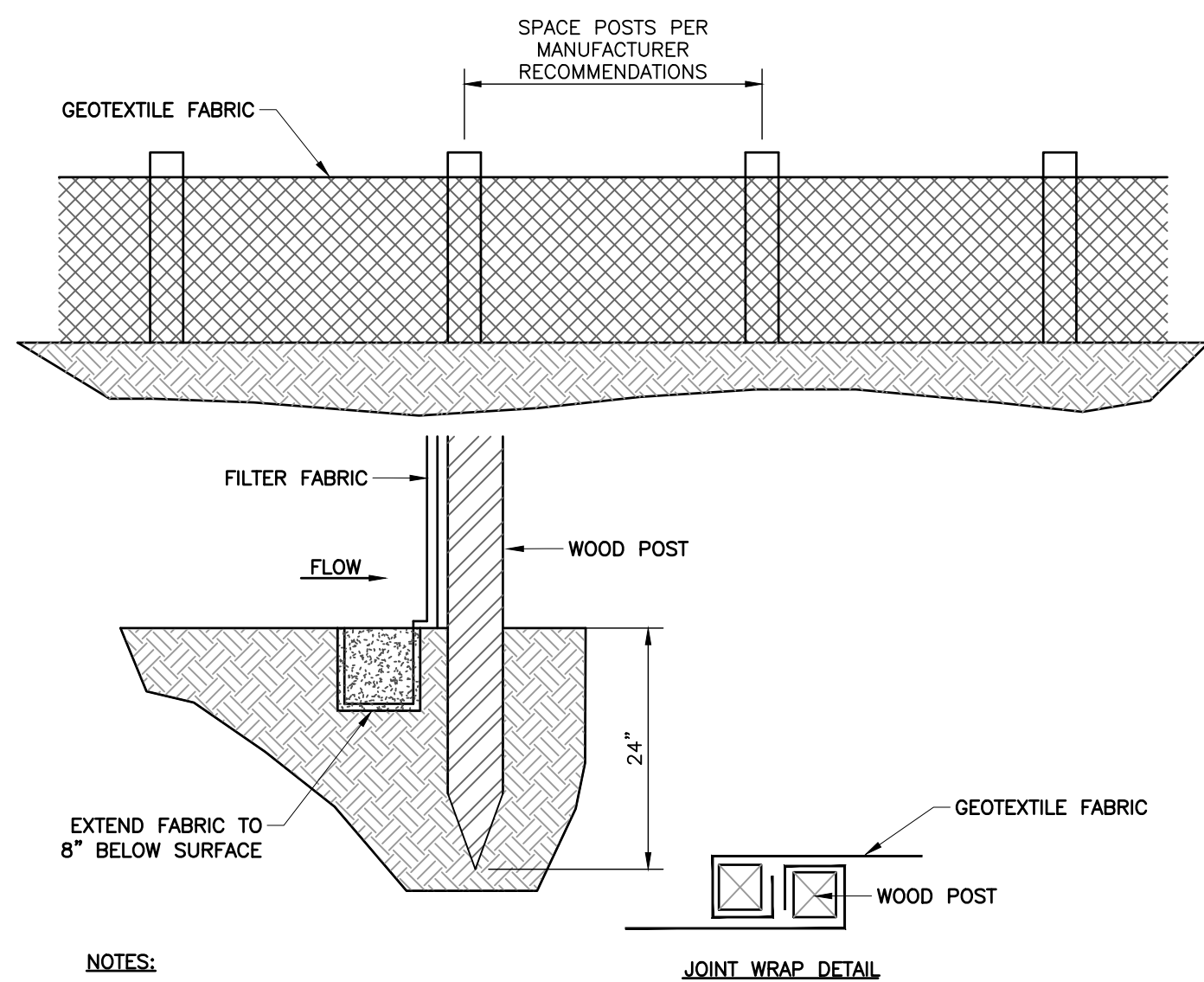
CONCRETE WASHOUT

STRAW BALES OR ABOVE GROUND

STANDARD DRAWING NO. RC-07 PAGE 1 of 1

NOT TO SCALE

DATE

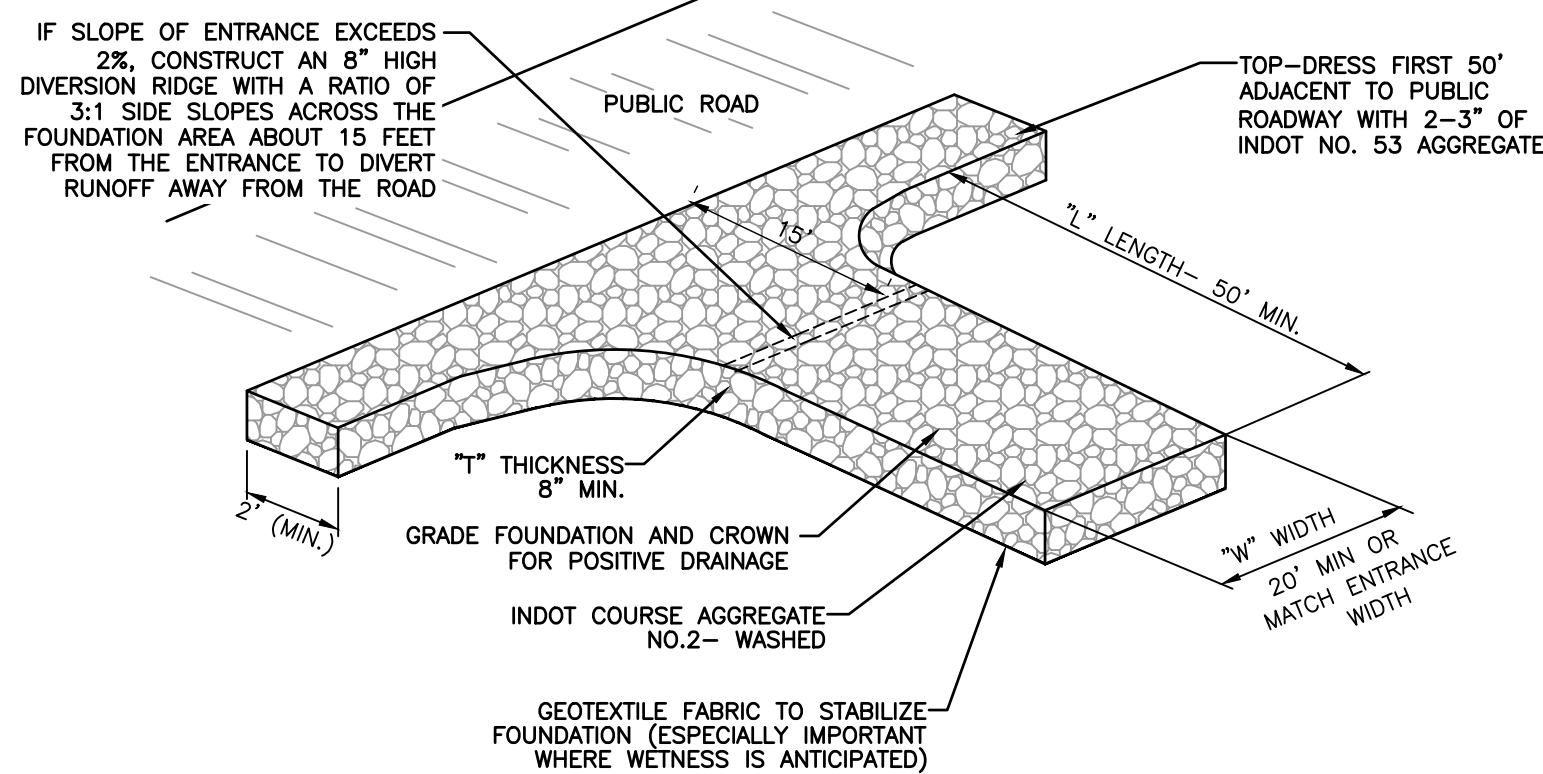


NOTES:

1. POSTS SHALL HAVE A MINIMUM LENGTH IF 36 INCHES PLUS BURIAL DEPTH.
2. POST MATERIAL SHALL BE WOOD, STEEL, OR SYNTHETIC, AND SHALL BE OF SUFFICIENT STRENGTH TO RESIST DAMAGE DURING INSTALLATION AND TO SUPPORT APPLIED LOADS.
3. FABRIC SHALL BE WOVEN GEOTEXTILE FABRIC CONSISTING OF STRONG, ROT RESISTANT, MATERIALS RESISTANT TO DETERIORATION FROM ULTRAVIOLET AND HEAT EXPOSURE.

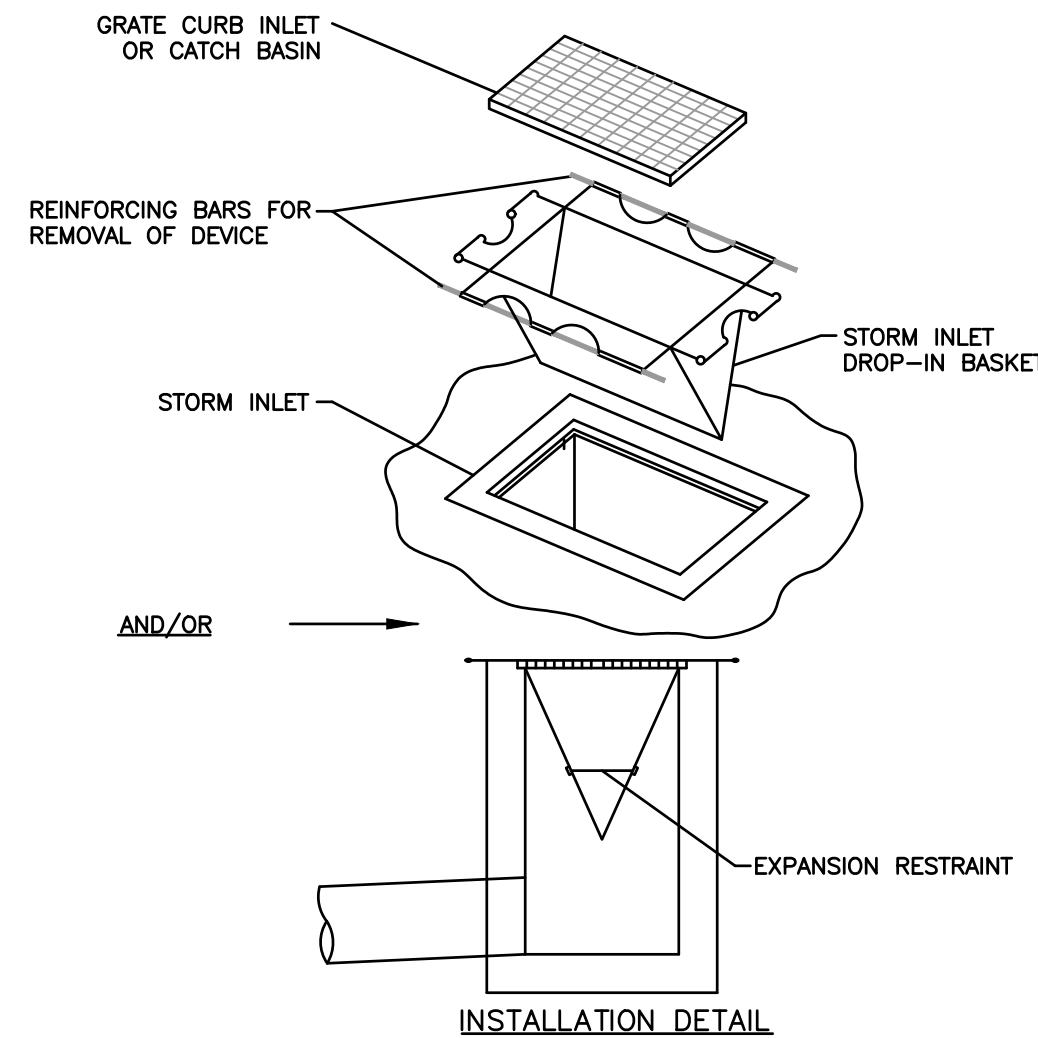
DETAIL 902 SILT FENCE DETAIL

NOT TO SCALE



DETAIL 901 TEMPORARY CONSTRUCTION ENTRANCE

NOT TO SCALE



NOTE:
AS AN ALTERNATIVE, THE CONTRACTOR MAY SUBSTITUTE A COMMERCIAL GEOTEXTILE FILTER OR AN APPROVED EQUAL.

DETAIL 900 EROSION CONTROL INLET PROTECTION FOR CURB INLET AND CATCH BASINS

NOT TO SCALE



SOIL MAP

SOIL MAPS FROM THE UNITED STATES DEPARTMENT OF AGRICULTURE, SOIL CONSERVATION SERVICE.

SOIL LEGEND

LaB - LAKELAND SAND, 2 TO 6 PERCENT SLOPES



PRELIMINARY
BID SET

STORMWATER POLLUTION PREVENTION DETAILS

DRAWING NO.

C901

SHEET 18 OF 19

DATE:	05/19/2022	DRAWN BY:	KRG
DWG SCALE:	AS NOTED	CHECKED BY:	DRAFT
PROJECT NO:	320-610	APPROVED BY:	DRAFT

SUBMITTAL & REVISION RECORD

NO	DATE	DESCRIPTION



Civil & Environmental Consultants, Inc.
11 Municipal Drive · Suite 300 · Fishers, IN 46038
Ph: 317.655.7777 · 877.746.0749 · Fax: 317.655.7778
www.cecinc.com

BELL CAROLINA, LLC.
TACO BELL
567 SPEARS CREEK CHURCH ROAD
ELGIN, SC 29045