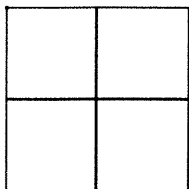


CORNER RECORD

Agency Index BK 121 PG 69
 Document Number CR12952

City of OAKLAND County of ALAMEDA, California
 Brief Legal Description 18TH STREET & CAMPBELL STREET MONUMENT, PARCEL MAP 10479, BK. 340, PG. 34-35



CORNER TYPE

Government Corner ☐ Control
 Meander ☐ Property
 Rancho ☐ Other

Date of Survey 11-06-2018

COORDINATES (Optional)

N. N/A E. N/A

☐ Elevation N/A

☐ Units Metric ☐ U.S. Survey Foot ☐

☒ Horizontal Datum N/A

Zone N/A Epoch Date N/A

Vertical Datum N/A

☐ Complies with Public Resources Code §§8801-8819

☐ Complies with Public Resources Code §§8890-8902

PLS Act Ref: ☐ 8765(d) ☒ 8771 ☐ 8773 ☐ Other:

Corner/
 Monument: ☒ Left as found ☐ Established ☐ Rebuilt ☒ Pre-Construction
☐ Found and tagged ☐ Reestablished ☒ Referenced ☐ Post-Construction

Narrative of corner identified and monument as found, set, reset, replaced, or removed:

☒ See sheet #2 for description (s).

SURVEYOR'S STATEMENT

This Corner Record was prepared by me or under my direction in conformance with
 the Professional Land Surveyors' Act on MAY 30TH 2019

Signed Kelly Johnson P.L.S. No. 9126

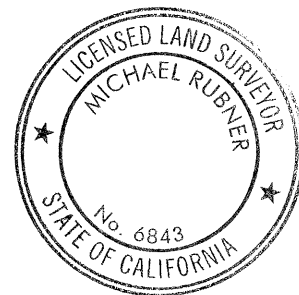


COUNTY SURVEYOR'S STATEMENT

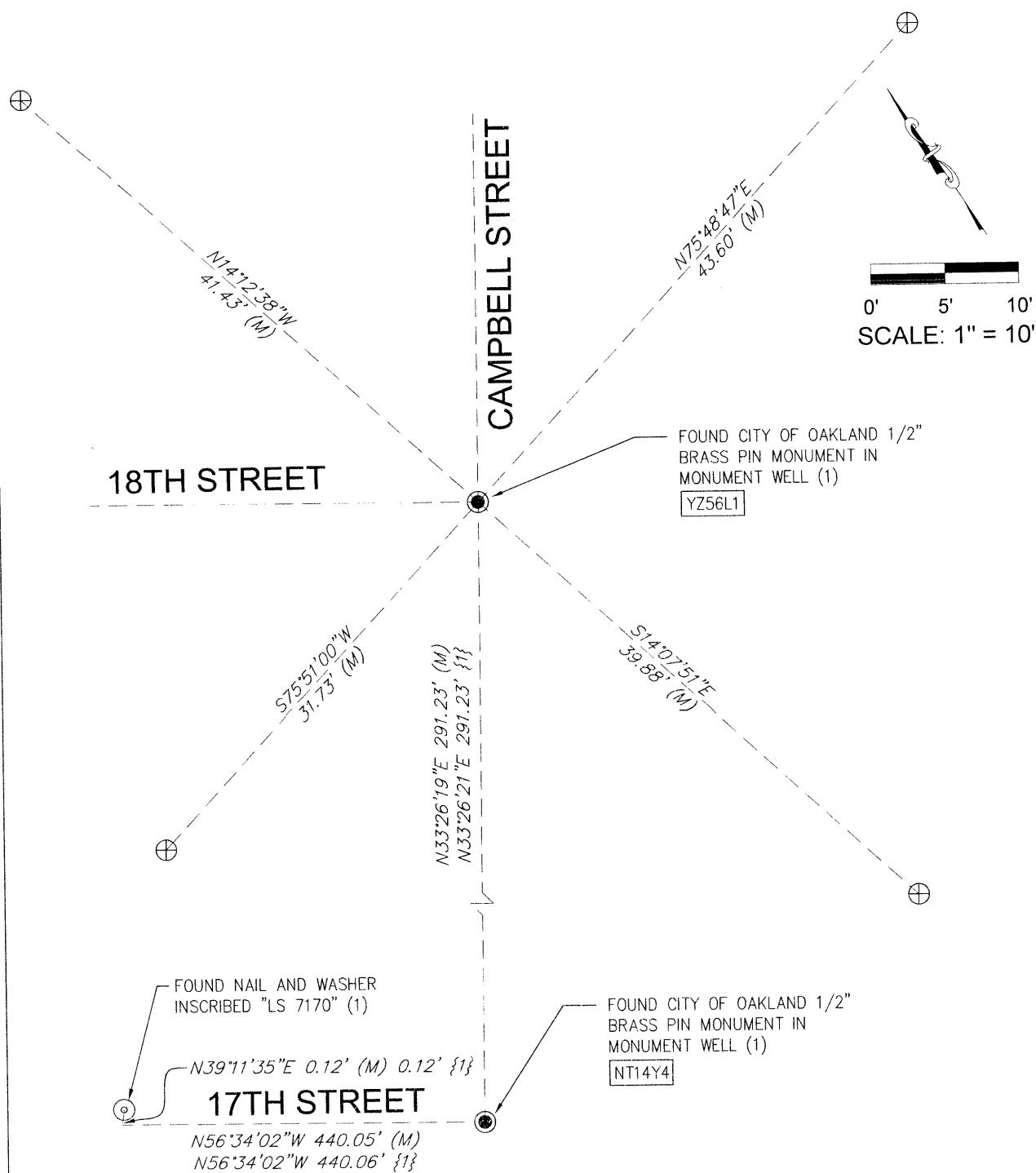
This Corner Record was received 26 APRIL 2019
 and examined and filed 21 JUNE 2019

Signed Michael Rubner P.L.S. or P.C.E. No. 6843

Title COUNTY SURVEYOR



County Surveyor's Comment _____



LEGEND

----- MONUMENT TIE LINE



SET CHISELED "X" IN CONCRETE

(1)

CITY OF OAKLAND MONUMENT MAPS 235, 236, 250, 251

(M)

MEASURED DATA

{1}

RECORD DATA PER PARCEL MAP 10479, BOOK 340, PAGES 34-35