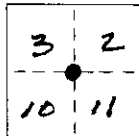


# CORNER RECORD

COUNTY OF MONO T. 13 R. 27E SEC. 10 MERIDIAN MDM CALIFORNIA

CORNER TYPE: GOV'T. CORNER ☒ MEANDER ☐ RANCHO ☐ CONTROL ☐ OTHER ☐

CORNER IDENTIFICATION - DATE OF VISIT SEPT. 26 19 89



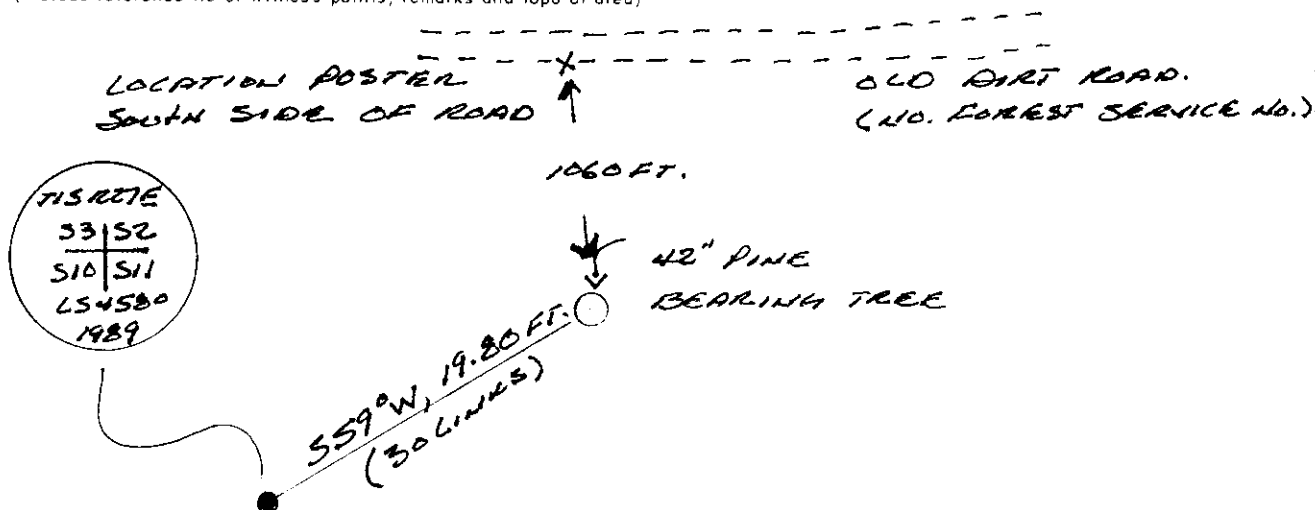
CORNER - LEFT AS FOUND ☐ FOUND AND TAGGED ☐ REESTABLISHED OBLITERATED CORNER ☒ REBUILT ☐

PHYSICAL DESCRIPTION OF CORNER FOUND: EVIDENCE AND METHOD USED TO IDENTIFY OR REESTABLISH  
FOUND A 42" PINE WITH BLAZE VISIBLE BUT  
OVERGROWN WITH A 1948 FOREST SERVICE LOCATION TAG  
ATTACHED. ACCEPTED AS AN ORIGINAL BEARING TREE  
PER THE 1856 SURVEY RECORD.

PHYSICAL DESCRIPTION OF MONUMENTS REBUILT OR PERPETUATED FROM G.L.O. RECORD DATA  
SET AN ALUMINUM POST 2 1/2" DIAMETER, 30" LONG,  
29" IN THE GROUND WITH A 3" ALUMINUM CAP  
MARKED AS SHOWN BELOW.

CALIFORNIA COORDINATE SYSTEM ORDER: FIRST ☐ SECOND ☐ THIRD ☐  
 STATIONS USED: NGS (USC & GS) ☐ STATE ☐ COUNTY ☐ OTHER ☐ STATION \_\_\_\_\_ STATION \_\_\_\_\_  
 ZONE \_\_\_\_\_ ELEVATION \_\_\_\_\_ NORTHINGS (Y) \_\_\_\_\_ EASTINGS (X) \_\_\_\_\_

SKETCH: (Include reference tie or witness points, remarks and topo of area)

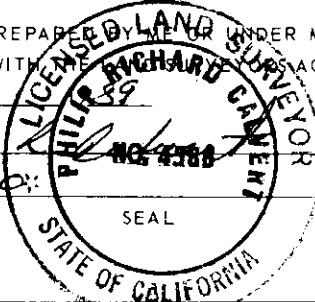


## SURVEYOR'S CERTIFICATE

THIS CORNER RECORD WAS PREPARED BY ME OR UNDER MY DIRECTION IN CONFORMANCE WITH THE SURVEY ACT ON OCTOBER 4 19 89

SIGNED: Philip Richard NO. 4388

L.S. or R.C.E. No.: LS4580



## COUNTY SURVEYOR'S CERTIFICATE

THIS CORNER RECORD WAS RECEIVED 10-25 19 89 AND EXAMINED AND FILED 1-18 19 90

BY: JAMES W. RILEY

TITLE: COUNTY SURVEYOR

DOCUMENT No. 1527-10-2

STATEMENT ON BACK OF SHEET

YES ☐ NO ☒