

# CORNER RECORD

DOCUMENT NUMBER

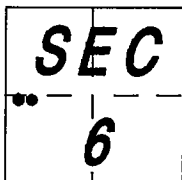
CR-96-10

CITY OF RIPON

COUNTY OF SAN JOAQUIN,

CALIFORNIA

BRIEF LEGAL DESCRIPTION: THE NE AND NW CORNERS OF PARCEL 'A', BK 8 OF PARCEL MAPS, PG 124.



## CORNER TYPE

GOV'T CORNER ☐

MEANDER ☐

RANCHO ☐

DATE OF SURVEY: JANUARY 5, 1996

☐

CONTROL

☐

PROPERTY

☐

OTHER

☐

☒

☐

## COORDINATES (OPTIONAL)

N. \_\_\_\_\_

E. \_\_\_\_\_

ZONE \_\_\_\_\_ DATUM \_\_\_\_\_

ELEVATION \_\_\_\_\_

CORNER - LEFT AS FOUND ☐

FOUND AND TAGGED ☐

ESTABLISHED ☐

REESTABLISHED ☒

REBUILT ☐

IDENTIFICATION AND TYPE OF CORNER FOUND: EVIDENCE USED TO IDENTIFY OR PROCEDURE USED TO ESTABLISH OR REESTABLISH CORNER:

**MONUMENTS AS SHOWN ON MAP FILED IN BOOK 8 OF PARCEL MAPS, PAGE 124, SAN JOAQUIN COUNTY RECORDS.  
SEE SKETCH ON SHEET 2 FOR METHOD USED TO REESTABLISH CORNERS.**

A DESCRIPTION OF THE PHYSICAL CONDITION OF THE MONUMENT AS FOUND AND AS SET OR RESET:

**SET 3/4" IRON PIPES TAGGED L.S. 3870.**

## SURVEYOR'S STATEMENT

THIS CORNER RECORD WAS PREPARED BY ME OR UNDER MY DIRECTION IN CONFORMANCE WITH  
THE LAND SURVEYORS' ACT ON FEBRUARY 21, 1996.

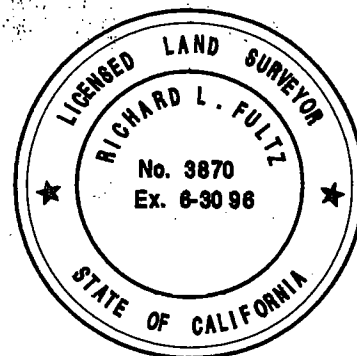
SIGNED

Richard L. Fultz  
RICHARD L. FULTZ

L.S. NUMBER

3870

(EXPIRES 6-30-96)



## COUNTY SURVEYOR'S STATEMENT

THIS CORNER RECORD WAS RECEIVED APRIL 3, 1996 AND EXAMINED  
AND FILED APRIL 15, 1996.

SIGNED

Henry M. Hirata

TITLE

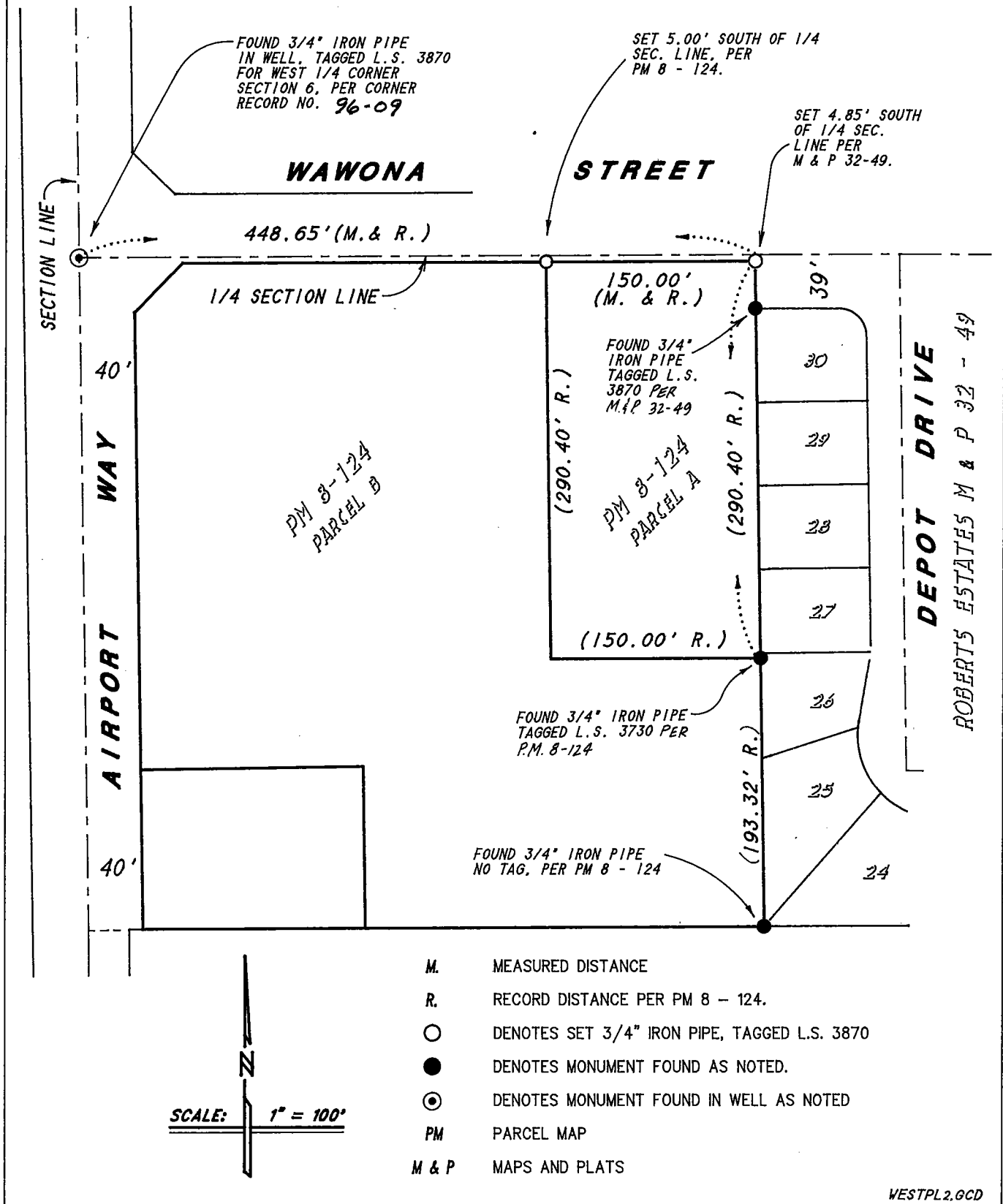
COUNTY SURVEYOR



## COUNTY SURVEYOR'S COMMENTS

# CORNER RECORD

## A PORTION OF THE NORTHWEST QUARTER, OF THE SOUTHWEST QUARTER OF SECTION 6, T.2 S., R.7 E.



WESTPL2.GCD