

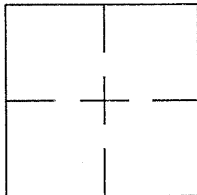
CORNER RECORD

Document Number CR 4726

City of OAKLAND

County of ALAMEDA, California

Brief Legal Description IRON PIN AND TAG MONUMENT LOCATED WITHIN THE INTERSECTION OF INTERNATIONAL BOULEVARD AND 15TH AVENUE. (155E15)



CORNER RECORD

Government Corner ☐ Control ☒  
Meander ☐ Property ☐  
Rancho ☐ Other ☐  
Date of Survey 10/20/11

COORDINATES  
(Optional)

N. \_\_\_\_\_  
E. \_\_\_\_\_  
Zone \_\_\_\_\_ Datum \_\_\_\_\_  
Elev. \_\_\_\_\_

Corner — Left as found ☒ Found and tagged ☐ Established ☐ Reestablished ☐ Rebuilt ☐

Identification and type of corner found: Evidence used to identify or procedure used to establish or reestablish the corner:  
FOUND IRON PIN AND TAG MONUMENT LOCATED WITHIN THE INTERSECTION OF INTERNATIONAL BOULEVARD AND 15TH AVENUE. (TAG ILLEGIBLE)  
AS SHOWN ON CITY OF OAKLAND MONUMENT MAP, PAGE 167.

THIS POINT WAS REFERENCED PRIOR TO A CONSTRUCTION PROJECT IN THE VICINITY.

A description of the physical condition of the monument as found and as set or reset: \_\_\_\_\_  
FOUND AND SET POINTS AS SHOWN ON PAGE 2.

THESE TIES ARE FOR THE PURPOSE OF PERPETUATING THE FOUND MONUMENTATION.

NO CLAIM IS MADE AS TO THE RELATIONSHIP OF THE POINTS OR LINES SHOWN HEREON TO TRUE BOUNDARY LOCATIONS.

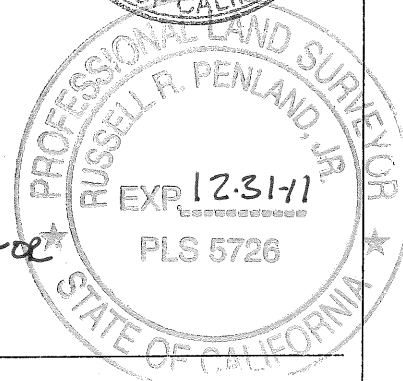
SURVEYOR'S STATEMENT

This Corner Record was prepared by me or under my direction in conformance with the Land Surveyors' Act on OCTOBER 21, 2011.  
Signed Vincent H. Cunha L.S. Number LS 4520  
VINCENT H. CUNHA



COUNTY SURVEYOR'S STATEMENT

This Corner Record was received 10-26-2011 and examined  
and filed 12-29-2011.  
Signed Russell R. Penland Title County Surveyor



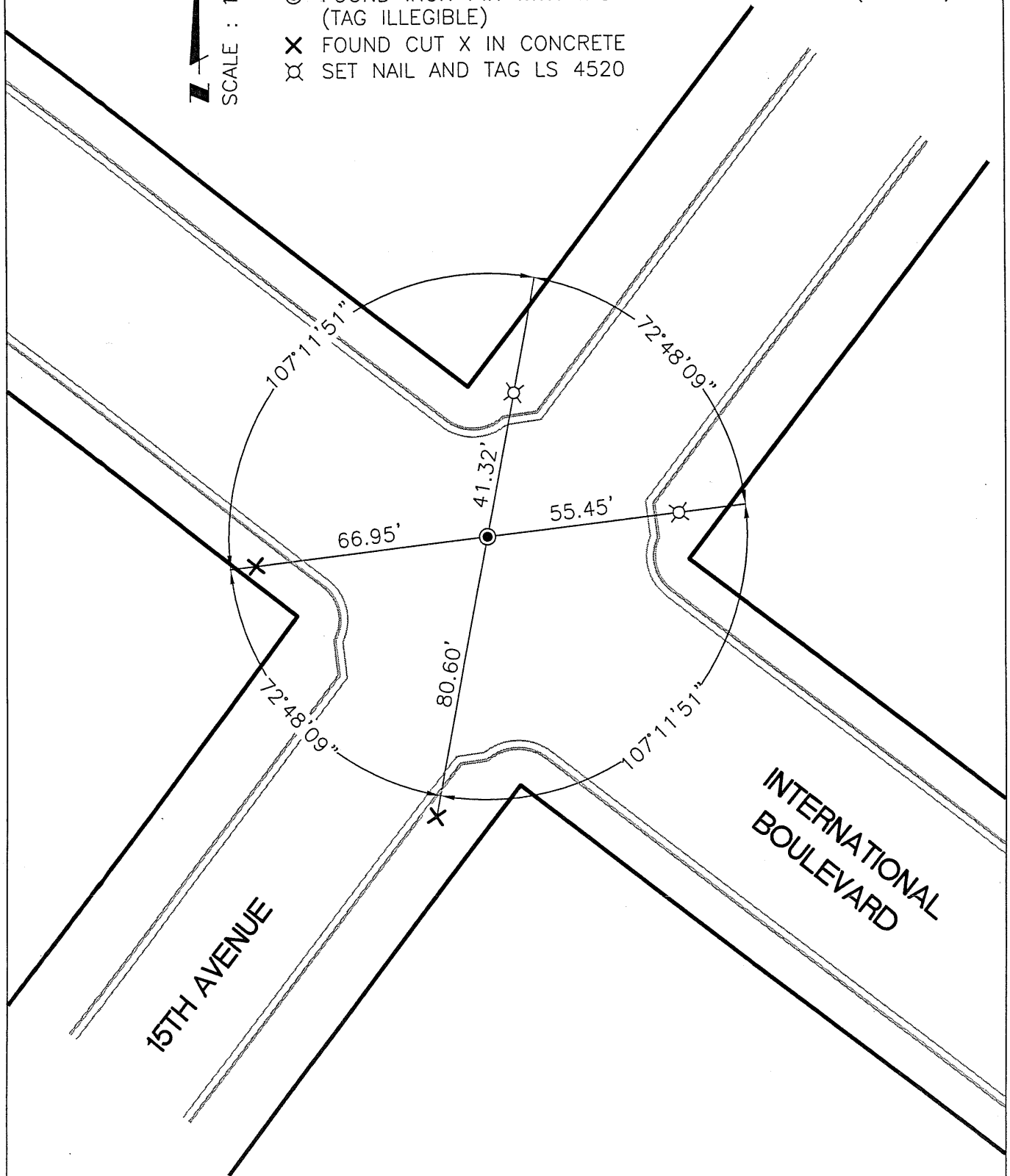
County Surveyor's Comment \_\_\_\_\_



SCALE : 1"=40'

LEGEND

- FOUND IRON PIN WITH TAG IN MONUMENT WELL (15SE15)  
(TAG ILLEGIBLE)
- ✕ FOUND CUT X IN CONCRETE
- ⊗ SET NAIL AND TAG LS 4520



210078 \ INTERNATIONAL \ CR-6