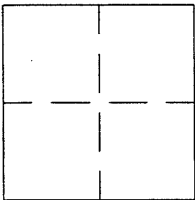


CORNER RECORD

BK 17 pg 014

APN No. _____ (Optional) Document Number CR-1535
UNINCORPORATED County of ALAMEDA, California
 Brief Legal Description MONUMENT ON SOLANO AVE AT SOUTHWEST END



CORNER TYPE

Government Corner ☐ Control ☐
 Meander ☐ Property ☐
 Rancho ☐ Other ☒
 Date of Survey JULY 2, 2001

COORDINATES (Optional)

N. _____
 E. _____
 Zone _____ Datum _____
 Elev. _____

Corner - Left as found ☒ Found and tagged ☐ Established ☐ Reestablished ☐ Rebuilt ☐

In compliance with Section 8771 of the Professional Land Surveyors' Act, this corner record is being filed to
 ESTABLISH X / REESTABLISH _____ the position of an existing monument PRIOR X / SUBSEQUENT _____
 to street or highway reconstruction. (Use this portion only when applicable.)

Identification and type of corner found: Evidence used to identify or procedure used to establish or reestablish the corner:
 THE MONUMENT DESCRIBED BELOW WAS REFERENCED BY TWO FOUND SCRIBED CROSSES PERPENDICULAR
 TO THE MONUMENT LINE OF SOLANO AVE

A description of the physical condition of the monument as found and as set or reset: FOUND ALAMEDA COUNTY PIN IN
CONCRETE POST IN MONUMENT WELL IN GOOD CONDITION AT SOUTHWEST END OF SOLANO AVE. THE
MONUMENT IS IN DANGER OF BEING DESTROYED DUE TO ROAD CONSTRUCTION.
SEE DRAWING NEXT PAGE.

SURVEYOR'S STATEMENT

This Corner Record was prepared by me or under my direction in conformance with
 the Land Surveyors' Act on 10/31/ 2001.

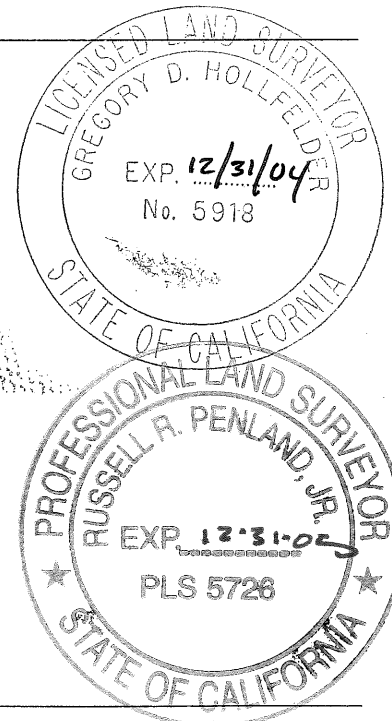
Signed Gregory Donald Hollfelder L.S. or R.C.E. Number 5918

COUNTY SURVEYOR'S STATEMENT

This Corner Record was received 8-13- 2001 and examined
 and filed 2-15 2003

Signed [Signature] Title County Surveyor

County Surveyor's Comment _____

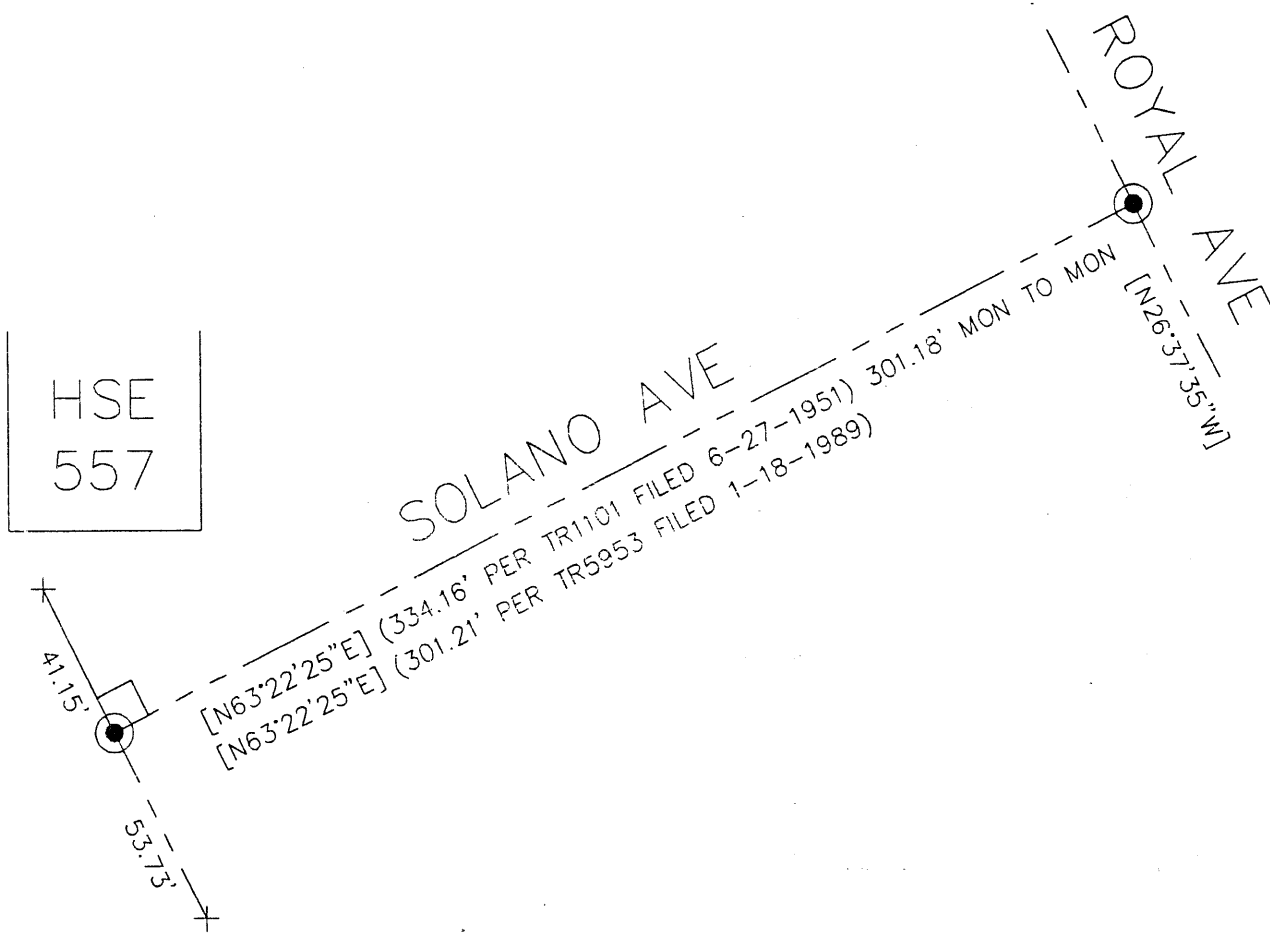
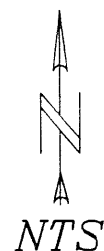


REFERENCE: ALAMEDA COUNTY MAPS,

TRACT;

1101, 31M47

5953, 181M55



LEGEND:

● = FOUND MONUMENT WITH PIN IN CONC POST 1' BELOW SURFACE

+ = FOUND SCRIBED CROSS IN SIDEWALK

() = RECORD DISTANCE IN DISCREPANCY WITH FIELD

[] = NON-VERIFIED RECORD DIMENSION