

# CORNER RECORD

Agency Index

Document Number

BK 149 PG 4

CR 16193

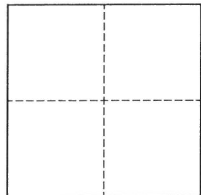
City of BerkeleyCounty of Alameda

, California

Brief Legal Description Intersection of Heinz Avenue and Eighth Street

## CORNER TYPE

## COORDINATES (Optional)



- ☐ Government Corner ☒ Control  
☐ Meander ☐ Property  
☐ Rancho ☐ Other

Date of Survey 08/04/2022

N. \_\_\_\_\_ E. \_\_\_\_\_

Elevation \_\_\_\_\_

Units ☐ Metric ☐ U.S. Survey Foot

Horizontal Datum \_\_\_\_\_

Zone \_\_\_\_\_ Epoch Date \_\_\_\_\_

Vertical Datum \_\_\_\_\_

☐ Complies with Public Resources Code §§8801-8819☐ Complies with Public Resources Code §§8890-8902

PLS Act Ref.:

☐ 8765(d)☒ 8771☐ 8773☐ Other:Corner/  
Monument:☒ Left as found☐ Established☐ Rebuilt☒ Pre-Construction☐ Found and tagged☐ Reestablished☒ Referenced☐ Post-Construction

Narrative of corner identified and monument as found, set, reset, replaced, or removed:

☒ See sheet #2 for description(s):

This Corner Record is being filed to reference the position of an existing monument, prior to a street rehabilitation project. This document is for preservation purposes only, and no attempt was made to determine the relationship to property, centerline, or right-of-way lines.

## SURVEYOR'S STATEMENT

This Corner Record was prepared by me or under my direction in conformance with

the Professional Land Surveyors Act on August 30, 2022

Signed

P.L.S. or R.C.E. No.

8040

## COUNTY SURVEYOR'S STATEMENT

This Corner Record was received \_\_\_\_\_

and examined and filed \_\_\_\_\_

SEP 3 1 2022

Signed

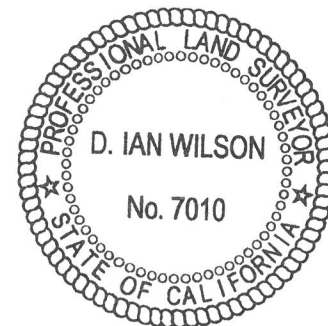
P.L.S. or R.C.E. No.

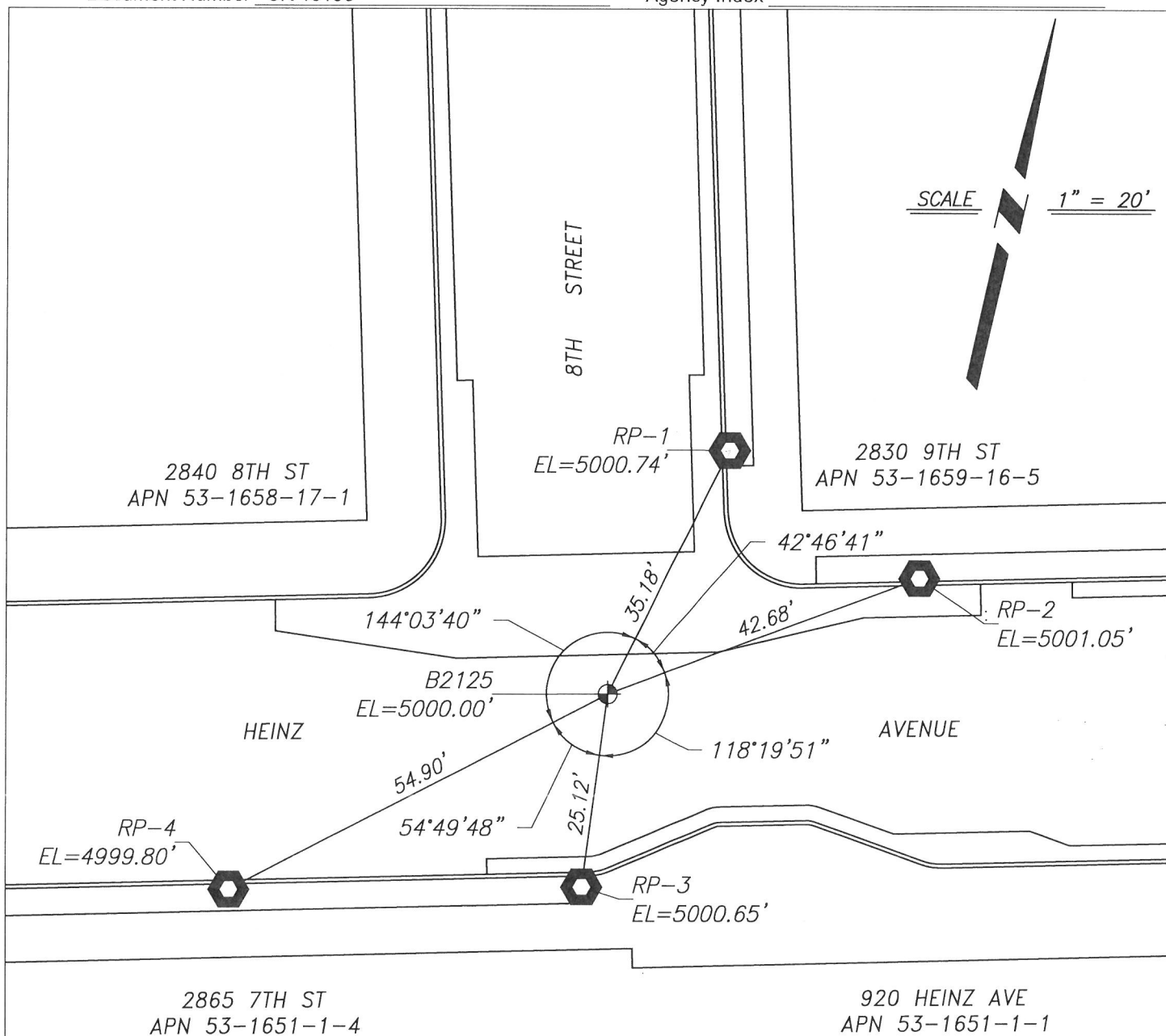
7010

Title

ALAMEDA COUNTY SURVEYOR

County Surveyor's Comment





## REFERENCE

- (A) PARCEL MAP 8389, IN THE CITY OF BERKELEY, RECORDED MAY 24, 2006, IN BOOK 290 OF PARCEL MAPS AT PAGES 11 & 12, ALAMEDA COUNTY RECORDS.

## LEGEND

- FOUND MONUMENT, 2" BRASS DISK, WITH PUNCH, IN WELL, CITY OF BERKELEY, STAMPED LS 5003
- 3/4" IRON PIPE, WITH CAP, STAMPED LS 8040, IN LANDSCAPE AREA, AS REFERENCE POINT

## NOTES

1. BASIS OF ELEVATIONS: CITY OF BERKELEY MONUMENT B2125, ELEVATION: 5000.00'