

MAP SHOWING PROPOSED BOUNDARIES OF SIERRA VALLEY TRACT NO.2
ASSESSMENT DISTRICT, MAMMOTH LAKES, COUNTY OF MONO
STATE OF CALIFORNIA

FILED IN THE OFFICE OF THE CLERK OF THE BOARD OF SUPERVISORS
THIS 29th DAY OF July 1969.

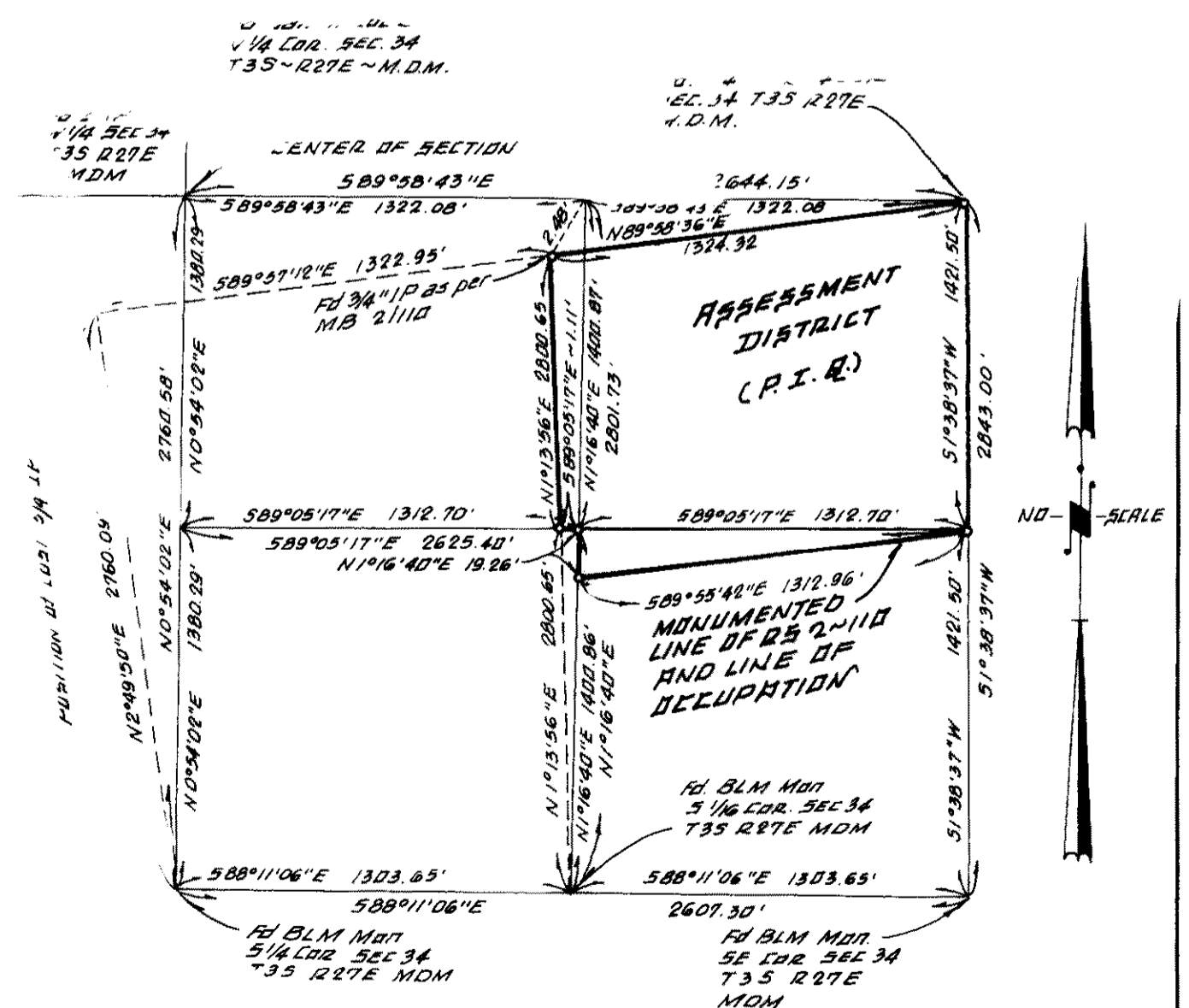
Ann M. Webb
CLERK OF THE BOARD OF SUPERVISORS

I HEREBY CERTIFY THAT THE WITHIN MAP SHOWING PROPOSED BOUNDARIES OF SIERRA VALLEY TRACT NO. 2 ASSESSMENT DISTRICT, MAMMOTH LAKES, COUNTY OF MONO, STATE OF CALIFORNIA, WAS APPROVED BY THE BOARD OF SUPERVISORS OF THE COUNTY OF MONO AT A REGULAR MEETING THEREOF, HELD ON THE 15th DAY OF July, 1969, BY ITS RESOLUTION NO. 44-69

Ann M. Webb
CLERK OF THE BOARD OF SUPERVISORS

RECORDED THIS 29th DAY OF July, 1969, AT THE HOUR
OF 2:00 O'CLOCK P. M. IN BOOK 11 PLA OF MAPS OF ASSES-
MENT DISTRICTS IN THE OFFICE OF THE COUNTY RECORDER IN THE COUNTY
OF MONO, STATE OF CALIFORNIA.

Aime M. Webb
COUNTY RECORDER OF COUNTY OF MONO



SURVEY DETAIL
(NOT TO SCALE)