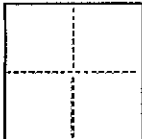


(For County Use Only)

CORNER RECORD

CR 349

COUNTY OF ALAMEDA T. _____ R. _____ MERIDIAN _____ CALIFORNIACORNER TYPE: GOV'T. CORNER ☐ MEANDER ☐ RANCHO ☐ CONTROL ☐ OTHER ☐CORNER IDENTIFICATION — DATE OF VISIT JULY 30, 1992CORNER — LEFT AS FOUND ☐ FOUND AND TAGGED ☐ REESTABLISHED OBLITERATED CORNER ☐ REBUILT ☐

PHYSICAL DESCRIPTION OF CORNER FOUND; EVIDENCE AND METHOD USED TO IDENTIFY OR REESTABLISH

- ⊙ FOUND ORIGINAL CITY OF OAKLAND CONCRETE MONUMENTS
IN HILLER DRIVE AS SHOWN ON TRACT 4518 (127 M 47)

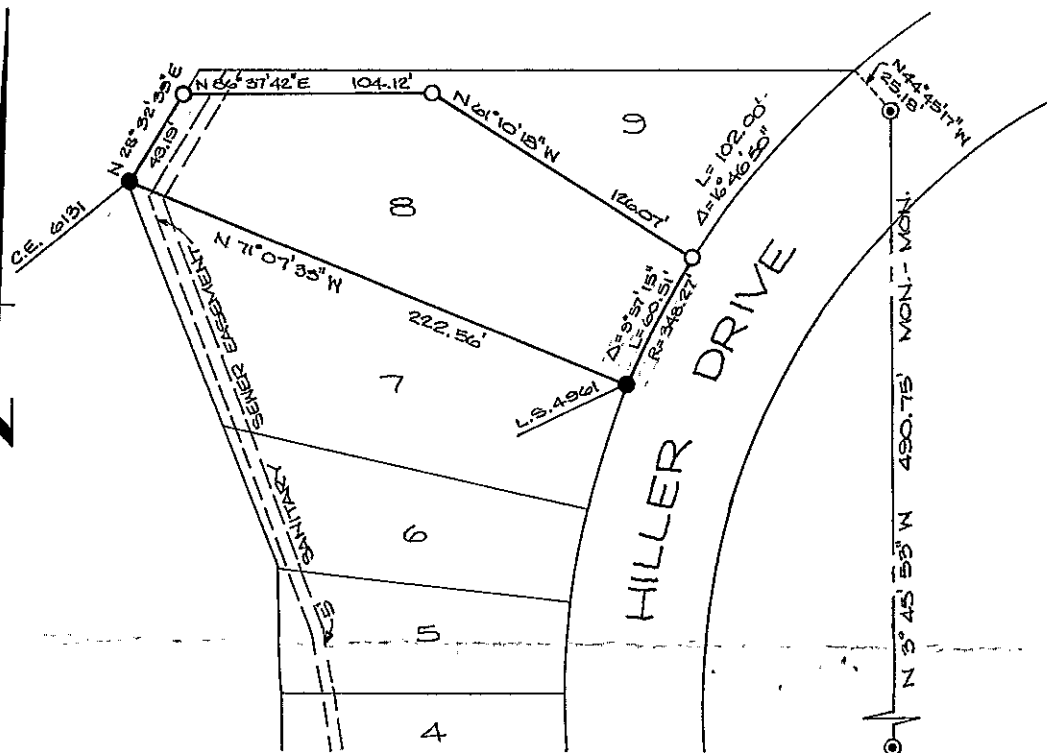
PHYSICAL DESCRIPTION OF MONUMENTS REBUILT OR PERPETUATED

- SET 5/8" REBAR WITH PLASTIC CAP, TAGGED L.S. 4961
● FOUND REBAR WITH PLASTIC CAP AS NOTED, AT THE CORNERS
OF LOT 8, PER RECORD DATA, TRACT 4518 (127 M 47).

CALIFORNIA COORDINATE SYSTEM ORDER: FIRST ☐ SECOND ☐ THIRD ☐
STATIONS USED: NGS (USC & GS) ☐ STATE ☐ COUNTY ☐ OTHER ☐ STATION _____ STATION _____
ZONE _____ ELEVATION _____ NORTHINGS (Y) _____ EASTINGS (X) _____

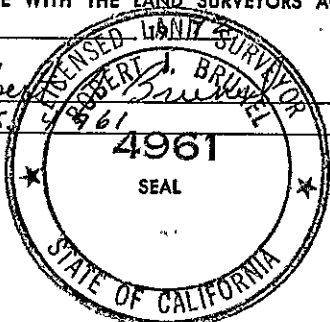
(Fold)

SKETCH: (Include reference tie or witness points, remarks and topo of area)



SURVEYOR'S CERTIFICATE

THIS CORNER RECORD WAS PREPARED BY ME OR UNDER MY
DIRECTION IN CONFORMANCE WITH THE LAND SURVEYORS ACT
ON AUG. 12

SIGNED: Robert SamuelL.S. or R.C.E. No.: L.S. 4961

COUNTY SURVEYOR'S CERTIFICATE

THE CORNER RECORD WAS RECEIVED 11/22/93
AND EXAMINED AND FILED 12/20/93

TITLE: DEPUTY COUNTY SURVEYOR

STATEMENT _____ BACK OF SHEET

YES ☐ NO ☐