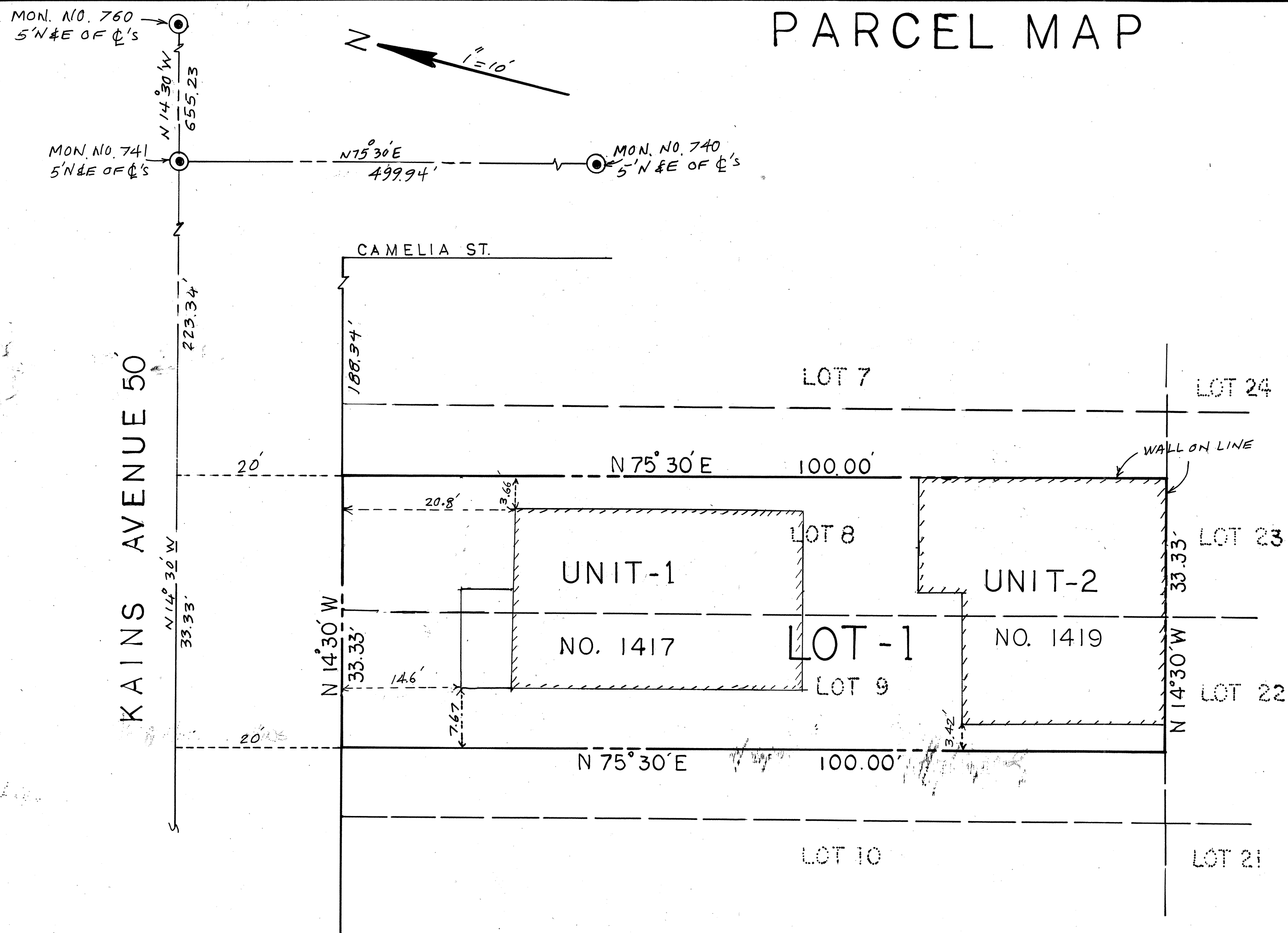


# PARCEL MAP



## BASIS OF BEARINGS

THE BEARING OF THE MONUMENT LINE OF CAMELIA ST. WAS ASSIGNED N 75° 30' E FROM PARCEL MAP NO. 4471, BOOK 152, PAGE 83, ALAMEDA COUNTY RECORDS.

## LEGEND

- EXTERIOR BOUNDARY LINE
- LOT LINE
- MONUMENT LINE
- ////// BLDG. LINE

P.M. 7434

CONVERSION OF 2 TIC UNITS INTO 2 CONDOMINIUM UNITS  
AT 1417-1419 KAINS AVENUE

BERKELEY, CALIFORNIA

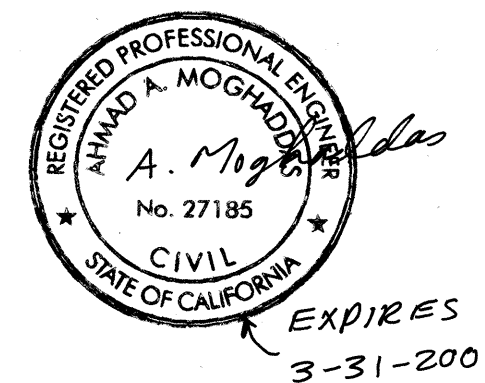
PORTION OF LOTS 8 AND 9, BLOCK N, AMENDED  
MAP OF REGENTS PARK, BOOK 18, PAGE 38,  
ALAMEDA COUNTY RECORDS.

OWNERS: NANCY H. WONG AND JANICE AUYOUNG  
1417 KAINS AVENUE,  
BERKELEY, CA. 94702

BY: AHMAD MOGHADDAS  
1631 BERKELEY WAY,  
BERKELEY, CA. 94703 TEL: 548-3366

APRIL 1999, SCALE: 1"=10'

SHEET 2 OF 2



AK 216 A 30