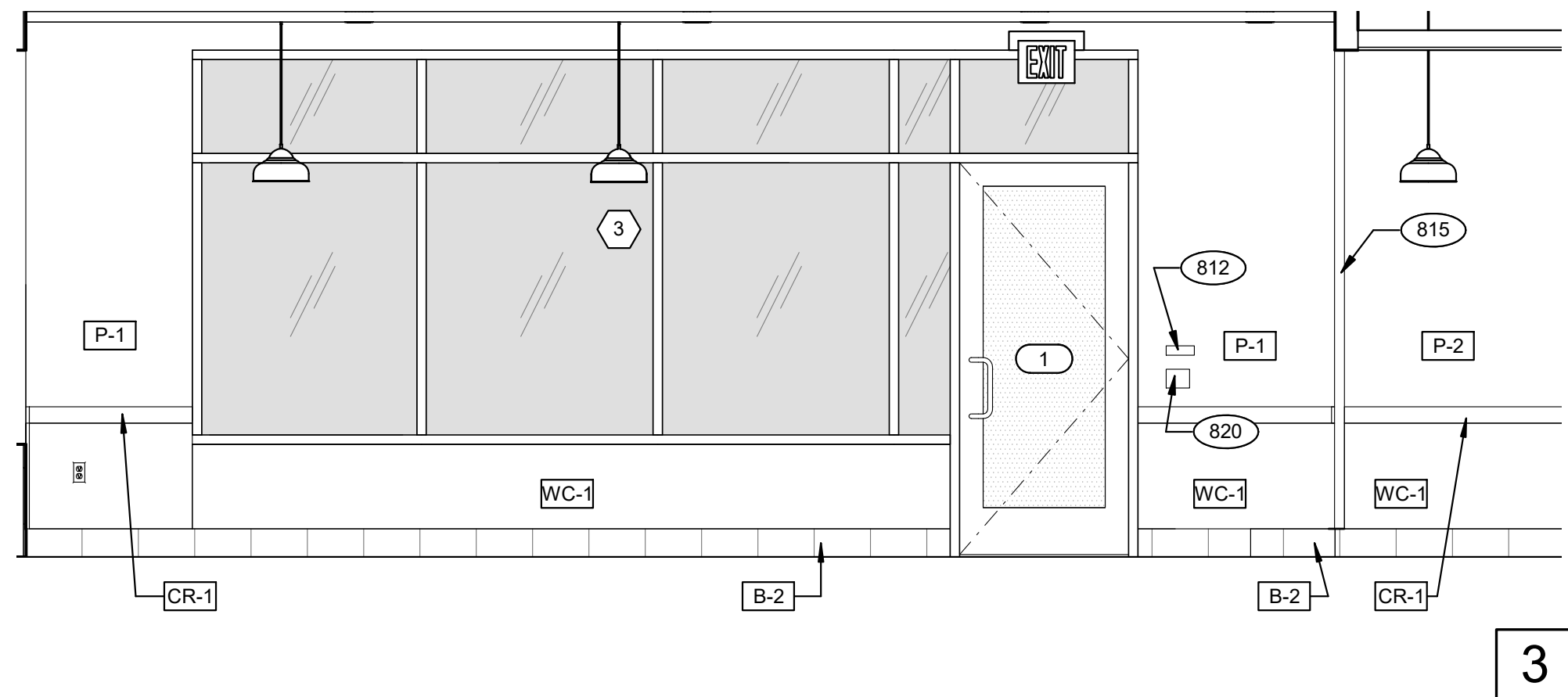
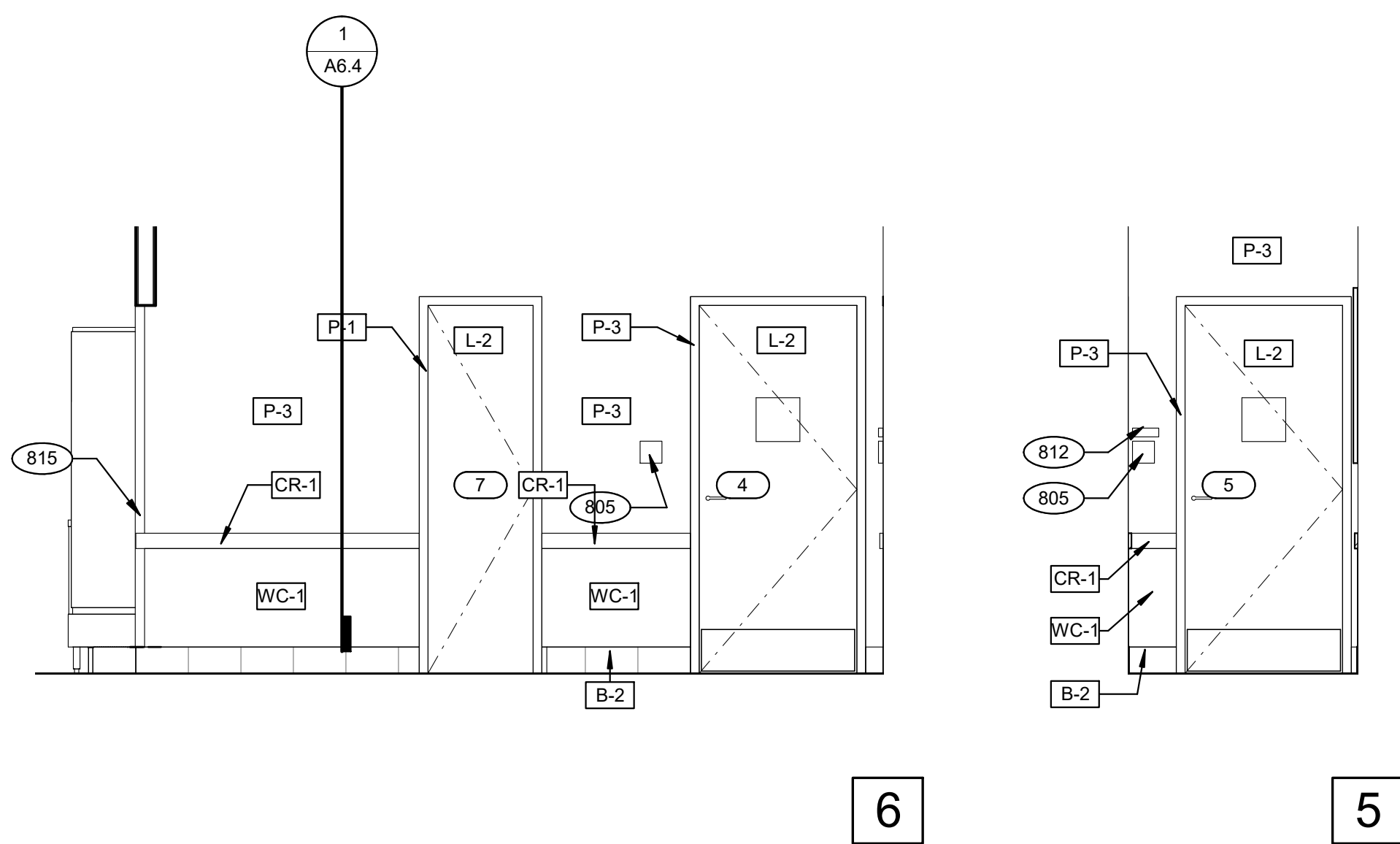


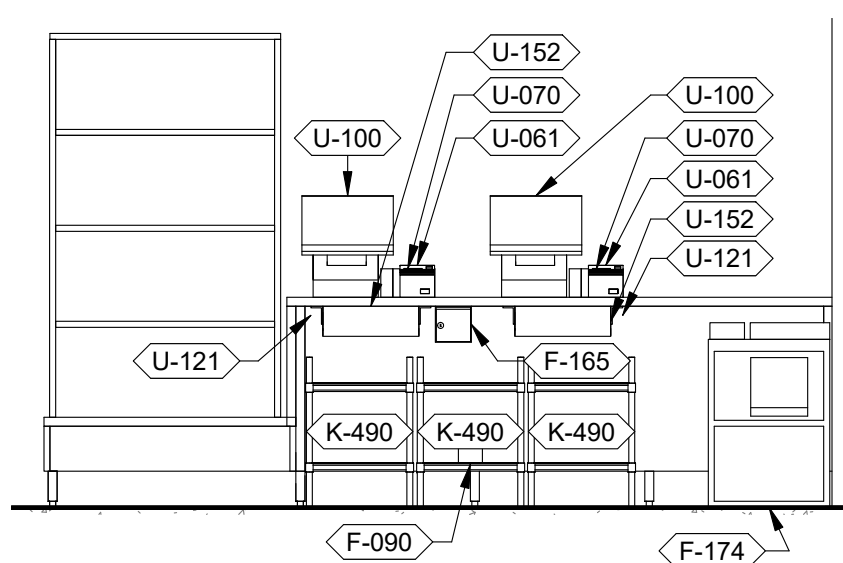
**DINING** 3/8" = 1'-0"



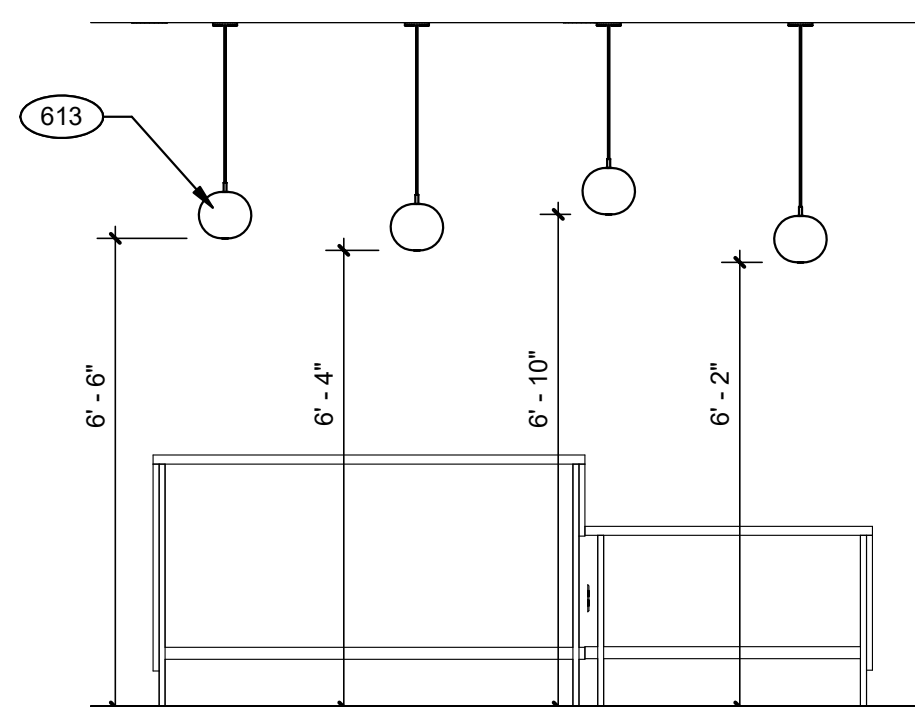
**DINING** 3/8" = 1'-0"



**PASSAGE**  $3/8'' = 1'-0''$



**SERVICE COUNTER - EMPLOYEE SIDE** 3/8" = 1'-0"



**HUB TABLE PENDANT DETAIL**  $3/8" = 1'-0"$

- 1AD PROVIDE TACTILE EXIT SIGN AT EGRESS DOOR PER "TACTILE SIGN" DETAIL ON ADA1.1 WHEN EXISTING IS NOT PROVIDED
- 613 PENDANT LIGHTING.
- 801 FOR ARTWORK DESCRIPTION, REFER TO ARTWORK SCHEDULE ON SHEET A2.0
- 802 28"x40" ART PANELS.
- 803 DIGITAL MENUBOARD BULKHEAD.
- 805 H.C. SIGNAGE.
- 806 PROVIDE CLEAR SILICONE CAULK WHERE ALL FIXED AND BUILT-IN COUNTERS/EQUIPMENT ABUT WALL SURFACES. WHERE GAP BETWEEN COUNTER AND COUNTER SPLASH/EQUIPMENT EXCEEDS 1/4" PROVIDE S.S. CLOSURE ANGLE.
- 807 6"x6"x18" GAUGE STAINLESS STEEL CHASE.
- 808 ELECTRIC PANELS
- 811 BOTTOM OF BEVERAGE AND ICE DISPENSING LEVERS SHALL BE NO HIGHER THAN 42" A.F.F.
- 812 NO SMOKING SIGN.
- 813 OPENING FINISHED WITH FRP FOR SYRUP TUBES. SEE 11/A.6.4 AND SHEET A1.0.
- 815 SS CORNER/END WALL CHANNEL GUARD, FULL HEIGHT.
- 820 ADA EXIT SIGN

## KEYNOTES

A

ENDEAVOR 2.0  
SPEARS CREEK CHURCH F  
(BY LIBERTY RIDGE DRIVE  
SOUTH CAROLINA 29229



ENDEAVOR 2.0  
INTERIOR  
ELEVATIONS  
DINING ROOM

# A8.0

PLOT DATE: 5/18/2022 2:22:56 PM