

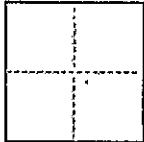
CR 39

CORNER RECORD

COUNTY OF Alameda T. 3 S R. 2 W Mount Diablo MERIDIAN CALIFORNIA

CORNER TYPE: GOV'T. CORNER ☐ MEANDER ☐ RANCHO ☐ CONTROL ☐ OTHER ☒

CORNER IDENTIFICATION — DATE OF VISIT September 5, 19 86



P.O.T. On Centerline of West Tennyson Road at Nimitz Freeway (I-880)

CORNER — LEFT AS FOUND ☐ FOUND AND TAGGED ☐ REESTABLISHED OBLITERATED CORNER ☐ REBUILT ☒

PHYSICAL DESCRIPTION OF CORNER FOUND; EVIDENCE AND METHOD USED TO IDENTIFY OR REESTABLISH

State of California Brass Plate set in island curb, destroyed by construction. Referenced monument prior to removal of curb.

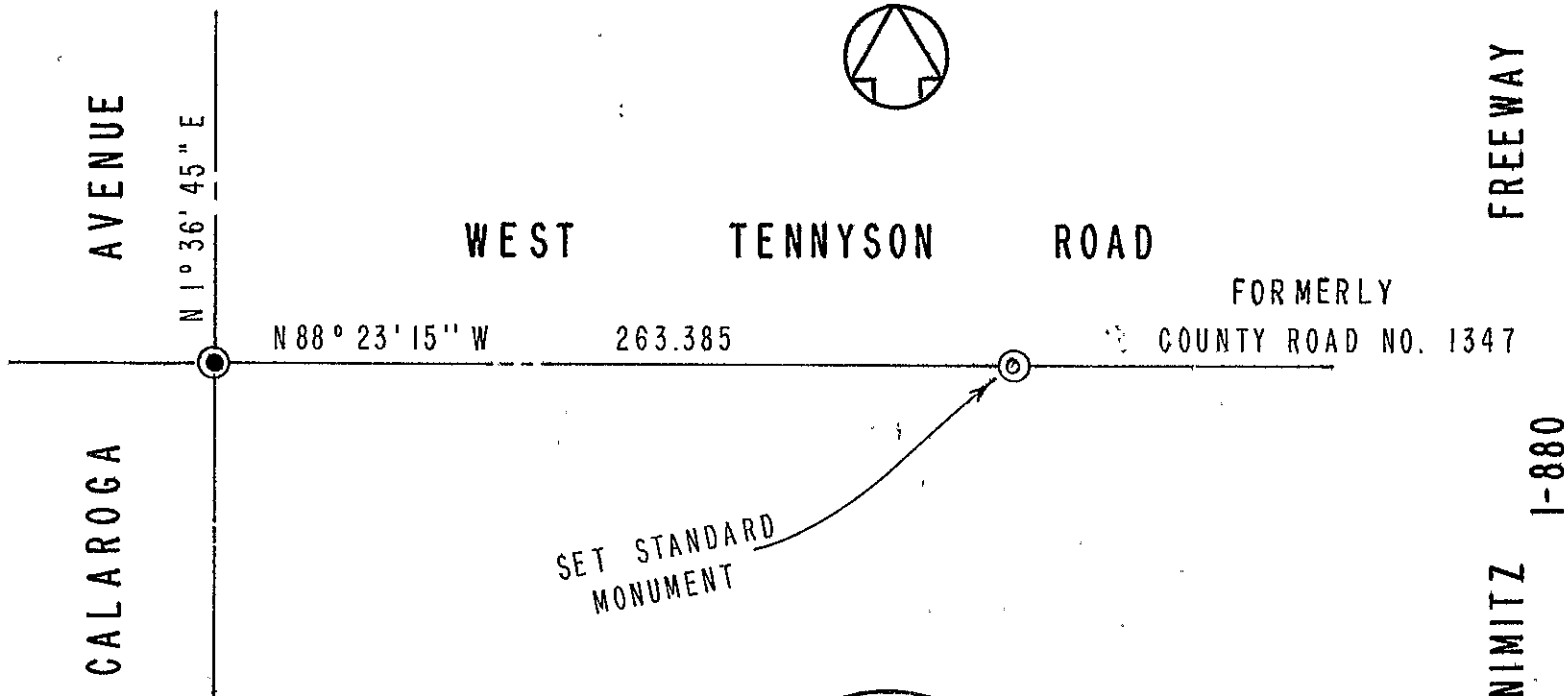
PHYSICAL DESCRIPTION OF MONUMENTS REBUILT OR PERPETUATED

Set standard City of Hayward concrete monument with Brass Plate marked "City of Hayward, City Engineer, 1986

CALIFORNIA COORDINATE SYSTEM ORDER: FIRST ☐ SECOND ☐ THIRD ☐
STATIONS USED: NGS (USC & GS) ☐ STATE ☐ COUNTY ☐ OTHER ☐ STATION _____ STATION _____
ZONE _____ ELEVATION _____ NORTHINGS (Y) _____ EASTINGS (X) _____

(Fold)

SKETCH: (Include reference tie or witness points, remarks and topo of area)



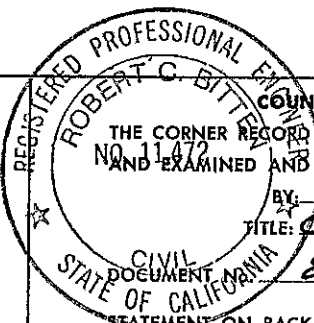
SURVEYOR'S CERTIFICATE

THIS CORNER RECORD WAS PREPARED BY ME OR UNDER MY DIRECTION IN CONFORMANCE WITH THE LAND SURVEYORS ACT ON September 5, 19 86

SIGNED: Harold B. Davis

L.S. or R.C.E. No.: 3352

Harold B. Davis
Civil Engineering Associate



COUNTY SURVEYOR'S CERTIFICATE

THE CORNER RECORD WAS RECEIVED Sep 17 19 86
AND EXAMINED AND FILED 11/17/86

BY: Robert C. Bitter
TITLE: Chief Deputy County Surveyor

STATEMENT ON BACK OF SHEET

BK 1 C.R. pg 39

YES ☐ NO ☒