

Jesus's Mission



Jesus came to offer
ETERNAL LIFE
to sinners.

Jesus came to
GLORIFY HIS
Father.

Print and cut out at least one of the five Lesson Theme Poster Puzzles for each student. Put each puzzle into a small plastic bag or envelope. Students will assemble the puzzles by aligning them onto construction paper or taping the pieces together. Assembled puzzles will be used later in the lesson as you review.

Jesus Has Power Over Nature



**Jesus walked
on water.**

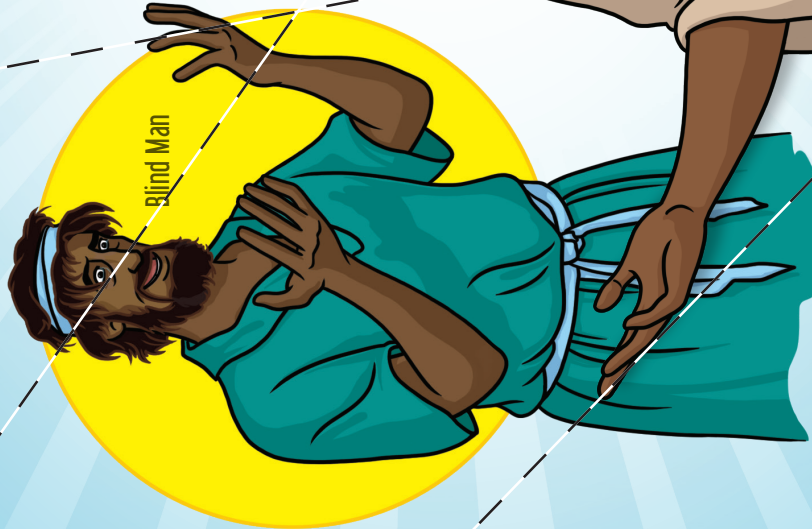


**Jesus brought
the fish.**

LESSON 2

Print and cut out at least one of the five Lesson Theme Poster Puzzles for each student. Put each puzzle into a small plastic bag or envelope. Students will assemble the puzzles by aligning them onto construction paper or taping the pieces together. Assembled puzzles will be used later in the lesson as you review.

Jesus Has Power Over Disease



Jesus healed
PHYSICALLY.



Jesus healed
SPIRITUALLY.

LESSON 3

Print and cut out at least one of the five Lesson Theme Poster Puzzles for each student. Put each puzzle into a small plastic bag or envelope. Students will assemble the puzzles by aligning them onto construction paper or taping the pieces together. Assembled puzzles will be used later in the lesson as you review.

Jesus Has Power Over Death



Jesus gave Lazarus **PHYSICAL** life.
Jesus gives sinners **SPIRITUAL** life.

Print and cut out at least one of the five Lesson Theme Poster Puzzles for each student. Put each puzzle into a small plastic bag or envelope. Students will assemble the puzzles by aligning them onto construction paper or taping the pieces together. Assembled puzzles will be used later in the lesson as you review.

Jesus Is the Bread of Life

Give us more bread.
We are hungry!

Do not labor for the food
that perishes but for food that
endures to everlasting life... I
am the Bread of Life.



Print and cut out at least one of the five Lesson Theme Poster Puzzles for each student. Put each puzzle into a small plastic bag or envelope. Students will assemble the puzzles by aligning them onto construction paper or taping the pieces together. Assembled puzzles will be used later in the lesson as you review.