

STANDARD ACCESSIBLE MOUNTING HEIGHTS AND CLEARANCES

4

RESTROOM DOOR SIGNS

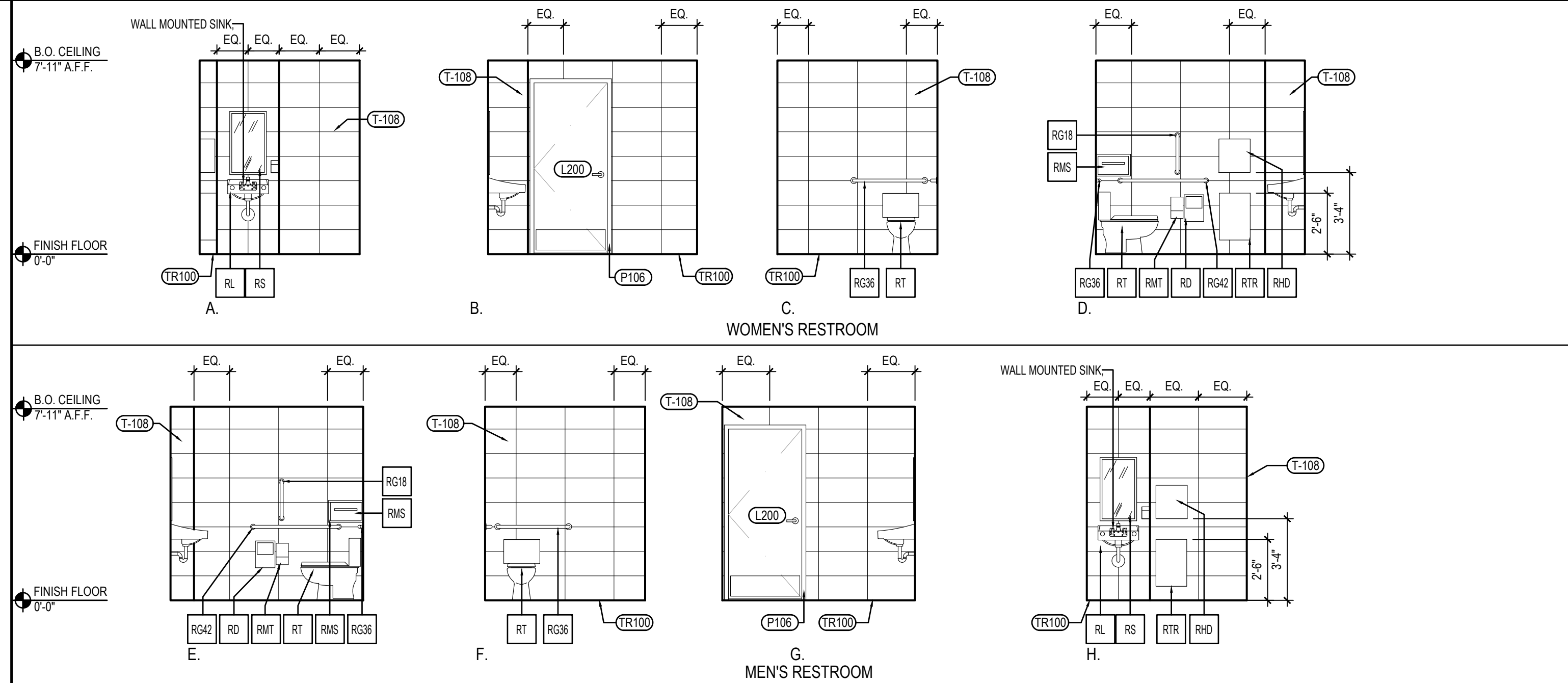
3

Scale= NTS

A-503

Scale= 1" = 1'-0"

A-503



RESTROOM ELEVATIONS

2

Scale= 1/4" = 1'-0"

A-503

NOT USED

6

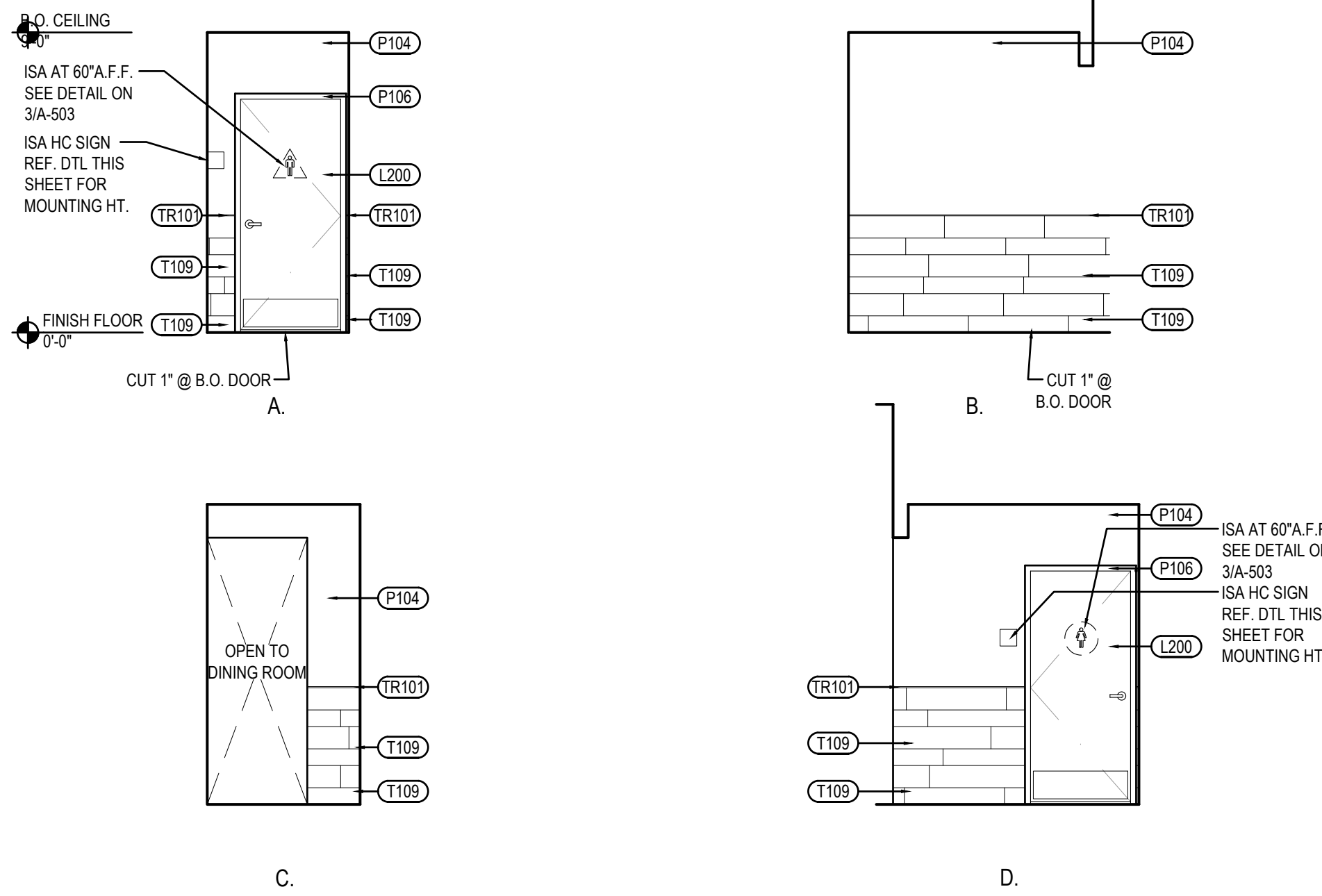
Scale= N.T.S.

A-503

TOILET ACCESSORY SCHEDULE

NO	DESCRIPTION
RG36	BOBRICK GRAB BAR, 36" LONG B-6806 1 1/2", SATIN FINISH; FURNISHED BY LOCKNET, INSTALLED BY G.C.
RG42	BOBRICK GRAB BAR, 42" LONG B-6806 1 1/2", SATIN FINISH; FURNISHED BY LOCKNET, INSTALLED BY G.C.
RG18	BOBRICK GRAB BAR, 18" LONG B-6806 1 1/2", SATIN FINISH; FURNISHED BY LOCKNET, INSTALLED BY G.C.
RM	BOBRICK CHANNEL FRAME MIRROR B-165 (1638) 18"X30" STAINLESS STEEL CHANNEL FRAME FURNISHED BY LOCKNET, INSTALLED BY G.C. MOUNT 40" MAX. TO BOTTOM OF REFLECTING SURFACE
RS	SOAP DISPENSER (BY VENDOR)
RMS	BOBRICK SEAT COVER DISPENSER B-221 STAINLESS STEEL, SATIN FINISH FURNISHED BY LOCKNET, INSTALLED BY G.C.
RTR	BOBRICK SURFACE MOUNTED TRASH RECEPTACLE MODEL # B-277; FURNISHED BY LOCKNET, INSTALLED BY G.C.
RHD	PAPER TOWEL DISPENSER FURNISHED BY PANDA EXPRESS, INSTALLED BY G.C.
RMT	BOBRICK MULTI-ROLL TOILET TISSUE DISPENSER B-2888 STAINLESS STEEL, SATIN FINISH FURNISHED BY LOCKNET, INSTALLED BY G.C.
RT	AMERICAN STANDARD CADET RIGHT HEIGHT ELONGATED TOILET 2467.016 TLT, 4142.600 TANK, AMERICAN STANDARD #5321.110 SEAT, COLOR: WHITE, TRIP TO BE ON OPEN SIDE. FURNISHED AND INSTALLED BY G.C.
RL	ZURN WALL HUNG LAVATORY Z5344, 20" X 18" VITREOUS CHINA, WITH 4" CENTER FAUCET HOLES & ZURN Z-1231 CONCEALED ARM CARRIER FURNISHED AND INSTALLED BY G.C.
RD	BOBRICK SURFACE-MOUNTED SANITARY NAPKIN DISPOSAL B-284 STAINLESS STEEL, SATIN FINISH FURNISHED BY LOCKNET, INSTALLED BY G.C.
RH	BOBRICK SURFACE-MOUNTED CLOTHES HOOK AND BUMPER B-233 SOLID ALUMINUM CASTING, MATTE FINISH, INSIDE OF RESTROOM DOORS FURNISHED BY LOCKNET, INSTALLED BY G.C.

* INSULATE ALL PIPES (TRAP & HOT WATER) AT ACCESSIBLE LAVATORIES.

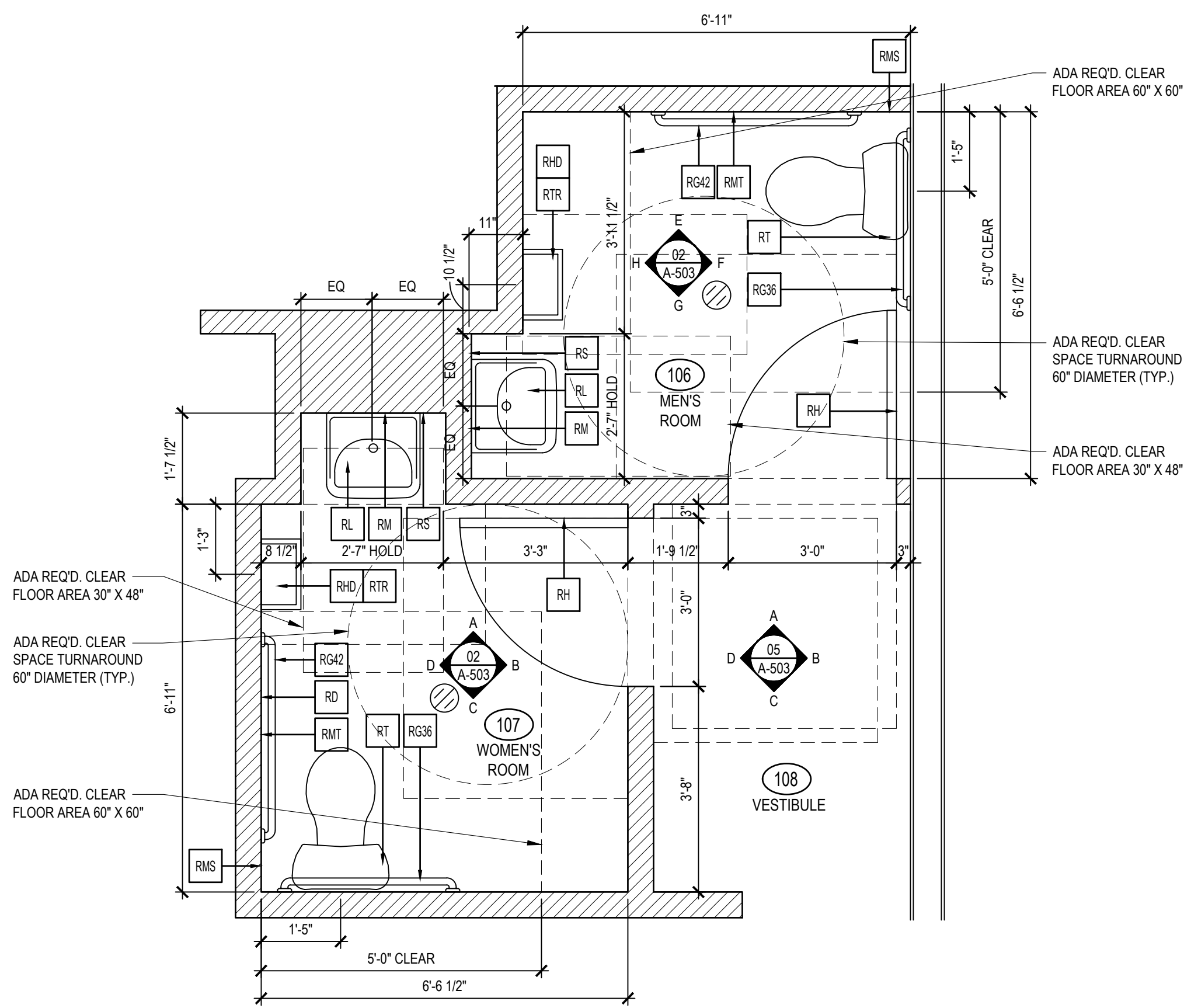


RESTROOM VESTIBULE ELEVATIONS

5

Scale= 1/4" = 1'-0"

A-503



ENLARGED RESTROOM PLAN

1

Scale= 1/2" = 1'-0"

A-503



PANDA RESTAURANT GROUP INC.

1683 Walnut Grove Ave.
Rosemead, California
91770

Telephone: 626.799.9898
Facsimile: 626.372.8288

All ideas, designs, arrangement and plans indicated or represented by this drawing are the property of Panda Express Inc. and were created for use on this specific project. None of these ideas, designs, arrangements or plans may be used by or disclosed to any person, firm, or corporation without the written permission of Panda Express Inc.

REVISIONS:

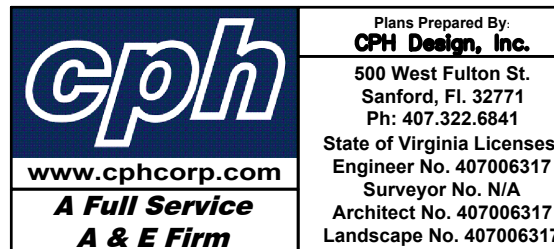
ISSUE DATE:

1	CHECK SET	10-23-20
2	PERMIT SET	03-15-21
3	BID SET	04-02-21

DRAWN BY: JO

PANDA PROJECT #: S4-21-D7864

ARCH PROJECT #: P7350



Plans Prepared By
CPH Design, Inc.
500 West Fulton St.
Sanford, FL 32771
Ph: 407.322.6841
State of Virginia License:
Engineer No. 407006317
Surveyor No. N/A
Architect No. 407006317
Landscape No. 407006317

**A Full Service
A & E Firm**

PANDA EXPRESS

END CAP - TENANT BUILD OUT
4501 S LABURNUM AVE
RICHMOND VA, 23231

A-503

ENLARGED RESTROOM
PLANS AND ELEVATIONS