

BK 43 Pg 70

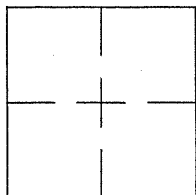
CORNER RECORD

Document Number CR 4804

City of OAKLAND

County of ALAMEDA, California

Brief Legal Description IRON PIN MONUMENT LOCATED WITHIN THE INTERSECTION OF 14TH STREET AND ADELINE STREET. (85W17)



CORNER RECORD

COORDINATES (Optional)

Government Corner ☐ Control ☒
 Meander ☐ Property ☐
 Rancho ☐ Other ☐
 Date of Survey 1/2/12

N. _____
 E. _____
 Zone _____ Datum _____
 Elev. _____

Corner — Left as found ☒ Found and tagged ☐ Established ☐ Reestablished ☐ Rebuilt ☐

Identification and type of corner found: Evidence used to identify or procedure used to establish of reestablish the corner:
FOUND IRON PIN MONUMENT LOCATED WITHIN THE INTERSECTION OF 14TH STREET AND ADELINE STREET.

AS SHOWN ON CITY OF OAKLAND MONUMENT MAP, PAGE 219.

THIS POINT WAS REFERENCED PRIOR TO A CONSTRUCTION PROJECT IN THE VICINITY.

A description of the physical condition of the monument as found and as set or reset:
FOUND AND SET POINTS AS SHOWN ON PAGE 2.

THESE TIES ARE FOR THE PURPOSE OF PERPETUATING THE FOUND MONUMENTATION.

NO CLAIM IS MADE AS TO THE RELATIONSHIP OF THE POINTS OR LINES SHOWN HEREON TO TRUE BOUNDARY LOCATIONS.

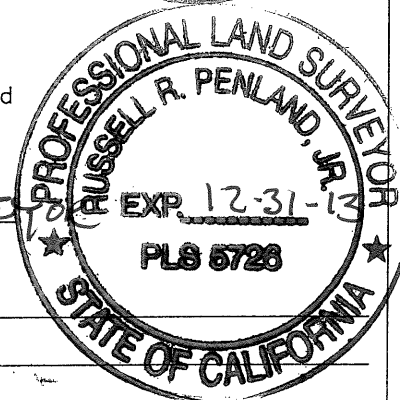
SURVEYOR'S STATEMENT

This Corner Record was prepared by me or under my direction in conformance with the Land Surveyors' Act on JANUARY 11, 20 12.
 Signed VINCENT H. CUNHA L.S. Number L5 4520



COUNTY SURVEYOR'S STATEMENT

This Corner Record was received 1-18-2012 and examined and filed 3-18-2012.
 Signed Russell R. Penland, Jr. Title County Surveyor



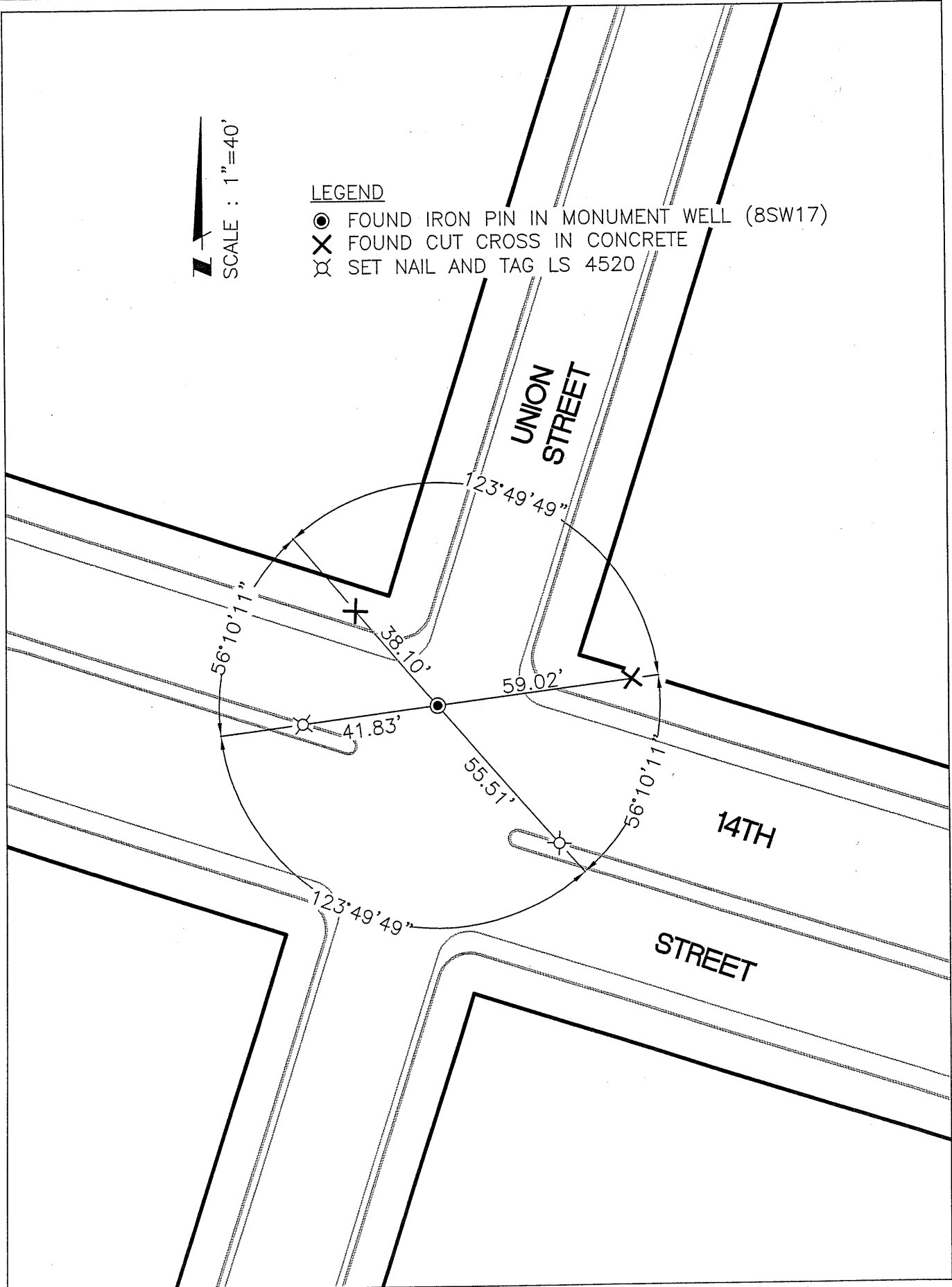
County Surveyor's Comment _____

TZ31F5

SCALE : 1"=40'

LEGEND

- FOUND IRON PIN IN MONUMENT WELL (8SW17)
- ✕ FOUND CUT CROSS IN CONCRETE
- ⊗ SET NAIL AND TAG LS 4520



211055\14TH\CR-9