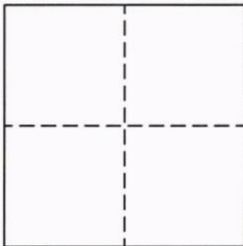


CORNER RECORD

Agency Index CR 653

Document Number _____

City of UNINCORPORATEDCounty of NAPA, CaliforniaBrief Legal Description PARCEL "A" 17 RS 99; APN 027-100-020**CORNER TYPE**

Government Corner ☐ Control ☐
Meander ☐ Property ☒
Rancho ☐ Other ☐

Date of Survey NOVEMBER, 2021**COORDINATES (Optional)**

N. _____ E. _____

Elevation _____

Units Metric ☐ U.S. Survey Foot ☐

Horizontal Datum _____

Zone _____ Epoch Date _____

Vertical Datum _____

☐ Complies with Public Resources Code §§8801-8819☐ Complies with Public Resources Code §§8890-8902**PLS Act Ref:**☒ 8765(d)☐ 8771☐ 8773☐ Other:**Corner/
Monument:**☒ Left as found☐ Established☐ Rebuilt☐ Pre-Construction☐ Found and tagged ☒ Reestablished☐ Referenced☐ Post-Construction

Narrative of corner identified and monument as found, set, reset, replaced, or removed:

☒ See sheet #2 for description(s):**SURVEYOR'S STATEMENT**

This Corner Record was prepared by me or under my direction in conformance with
the Professional Land Surveyors' Act on DECEMBER 1, 2021.

Signed

(P.L.S.)

or R.C.E. No.

6709**COUNTY SURVEYOR'S STATEMENT**This Corner Record was received November 24, 2021and examined and filed DECEMBER 7, 2021

Signed

P.L.S. or

R.C.E. No.

8491

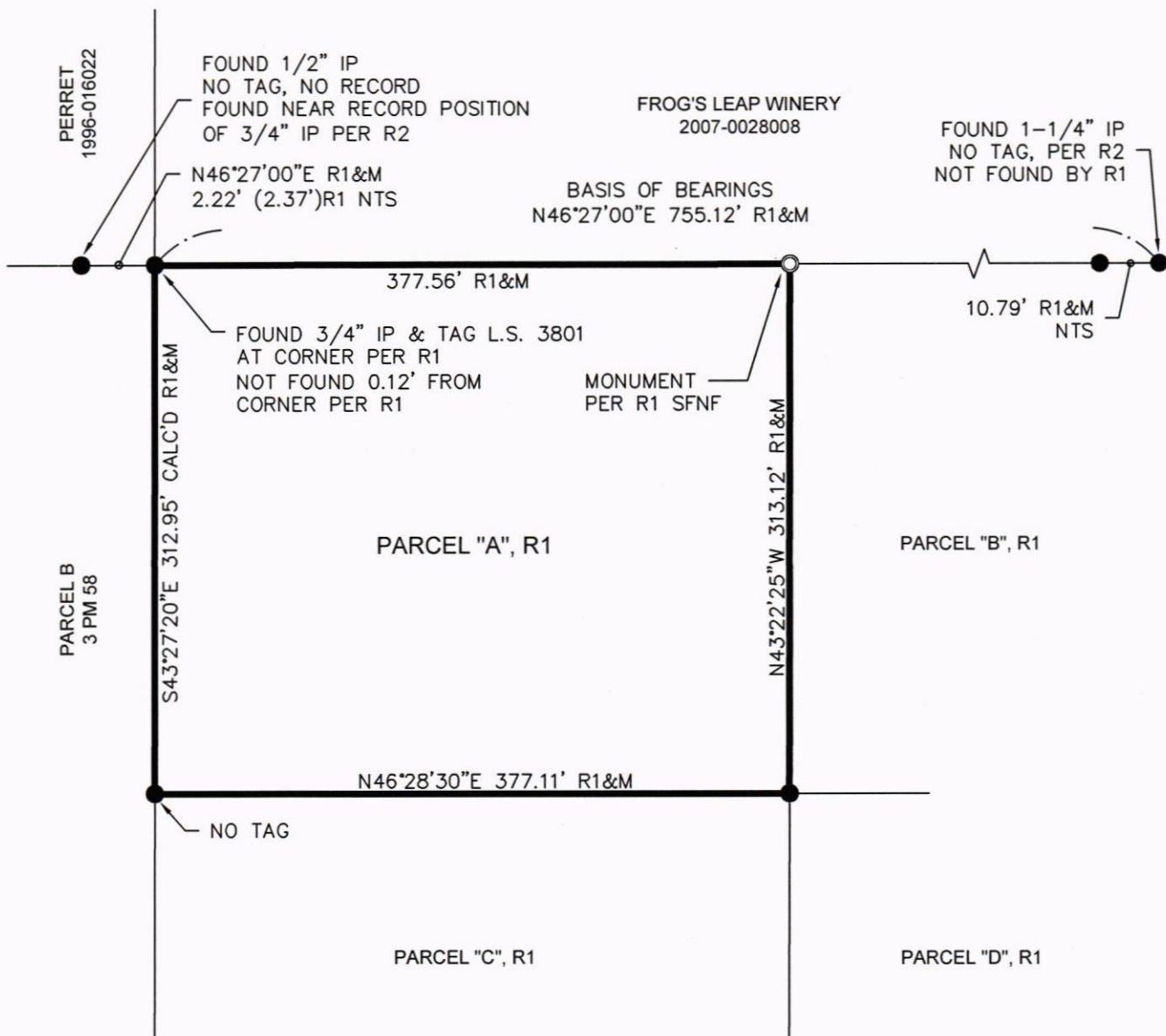
Title

COUNTY SURVEYOR

County Surveyor's Comment



PRJ 4235-00



GRAPHIC SCALE



(IN FEET)

1 INCH = 100 FT.

LEGEND

- FOUND 1/2" IRON PIN & TAG L.S. 3107 PER R1
UNLESS NOTED OTHERWISE
- SET 3/4" IRON PIPE & TAG P.L.S. 6709
- R1 17 RS 99
- R2 6 RS 41
- SUBJECT BOUNDARY LINE
- ADJACENT BOUNDARY LINE

PREPARED BY
ALBION SURVEYS

DECEMBER 1, 2021

PRJ 4235-00