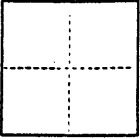


(For County Use Only)

## CORNER RECORD

CR 409

COUNTY OF ALAMEDA T. \_\_\_\_\_ R. \_\_\_\_\_ MERIDIAN \_\_\_\_\_ CALIFORNIACORNER TYPE: GOV'T. CORNER ☐ MEANDER ☐ RANCHO ☐ CONTROL ☐ OTHER ☐CORNER IDENTIFICATION — DATE OF VISIT SEPT 27th 19 93

PROPERTY AT 135 CROSS ROAD, OAKLAND, CA.

CORNER — LEFT AS FOUND ☐ FOUND AND TAGGED ☐ REESTABLISHED OBLITERATED CORNER ☐ REBUILT ☐

PHYSICAL DESCRIPTION OF CORNER FOUND; EVIDENCE AND METHOD USED TO IDENTIFY OR REESTABLISH

FOUND OLD CROSSES ON SIDEWALK AS PER OLD PLOT PLAN IN CITY FILES. OLD CROSSES WERE RE-SET ON THE NEWLY BUILT SIDEWALK.

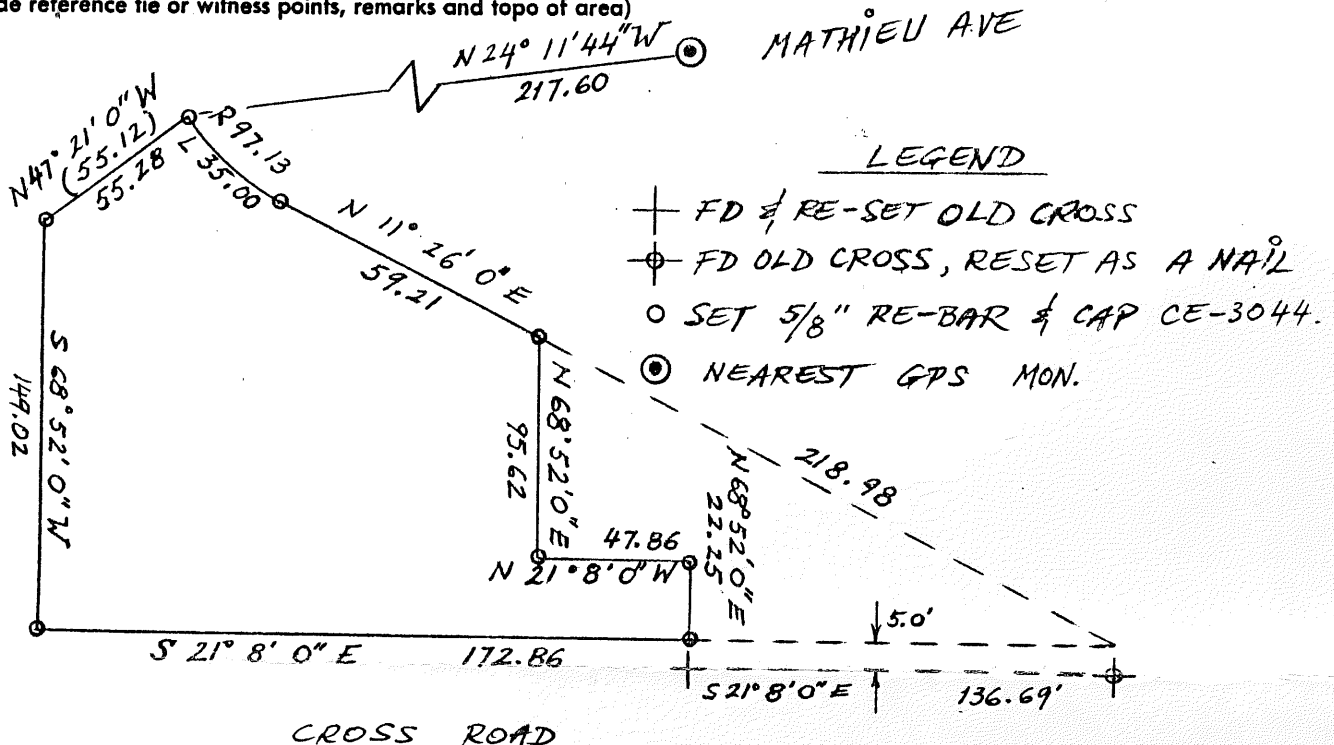
PHYSICAL DESCRIPTION OF MONUMENTS REBUILT OR PERPETUATED

CORNER POINTS SET AT LOCATIONS SHOWN BELOW

 CALIFORNIA COORDINATE SYSTEM ORDER: FIRST ☐ SECOND ☐ THIRD ☐  
 STATIONS USED: NGS (USC & GS) ☐ STATE ☐ COUNTY ☐ OTHER ☐ STATION \_\_\_\_\_ STATION \_\_\_\_\_  
 ZONE \_\_\_\_\_ ELEVATION \_\_\_\_\_ NORTHINGS (Y) \_\_\_\_\_ EASTINGS (X) \_\_\_\_\_

(Fold)

SKETCH: (Include reference tie or witness points, remarks and topo of area)



## SURVEYOR'S CERTIFICATE

 THIS CORNER RECORD WAS PREPARED BY ME OR UNDER MY  
 IN CONFORMANCE WITH THE LAND SURVEYORS ACT  
 ON JUNE 5TH 19 94
SIGNED: AGM/ASSOL.S. or R.C.E. No.: 30442

## COUNTY SURVEYOR'S CERTIFICATE

 THE CORNER RECORD WAS RECEIVED 4-7 19 95  
 AND EXAMINED AND FILED 4-18 19 2000

 BY [Signature]  
 TITLE: DEPUTY COUNTY SURVEYOR

DOCUMENT NO. \_\_\_\_\_

STATEMENT ON BACK OF SHEET

PLS 5726

YES ☒ NO ☐

POA 9.0

CR 409

COUNTY SURVEYOR'S COMMENT:

SINCE THIS CORNER RECORD ESTABLISHES ONE OR MORE POINTS OR LINES NOT SHOWN ON ANY SUBDIVISION MAP, OFFICIAL MAP, OR RECORD OF SURVEY, THE COUNTY SURVEYOR IS OF THE OPINION THAT A RECORD OF SURVEY SHOULD ALSO BE FILED. SEE SECTION 8762(E) OF THE LAND SURVEYORS' ACT.

A FILED COPY WAS TRANSMITTED TO SURVEYOR ON 4-18-2000. SEE SECTION 8773.2 OF THE L.S. ACT.

p. 2.