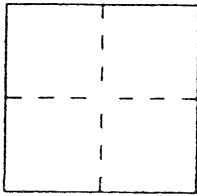


CORNER RECORD

Document Number

City of SAN LEANDRO County of ALAMEDA, California

Brief Legal Description LOT 6, DUTTON MANOR ADDITION
FILED 7/29/1912, BOOK 27 OF MAPS PAGE 7



CORNER TYPE

Government Corner ☐ Control ☐
Meander ☐ Property ☒
Rancho ☐ Other ☐
Date of Survey 8/1/2007

COORDINATES (Optional)

N. _____
E. _____
Zone _____ Datum _____
Elev. _____

Corner — Left as found ☐ Found and tagged ☐ Established ☒ Reestablished ☐ Rebuilt ☐

Identification and type of corner found: Evidence used to identify or procedure used to establish or reestablish the corner: USED FOUND MONUMENTS ON THE LINE
BETWEEN LOTS 6 AND 5 TO ESTABLISH BOUNDARY.
FOUND MONUMENTS SHOWN ON CORNER RECORD 937

A description of the physical condition of the monument as found and as set or reset: FOUND 3/4"
IRON PIPE WITH PLASTIC CAP LS 5530 IN GOOD
CONDITION. FOUND NAIL IN SIDEWALK ON S' OFFSET
WITHOUT HEAD OR TAG. RESET NAIL WITH BRASS
TAG LS 5530.

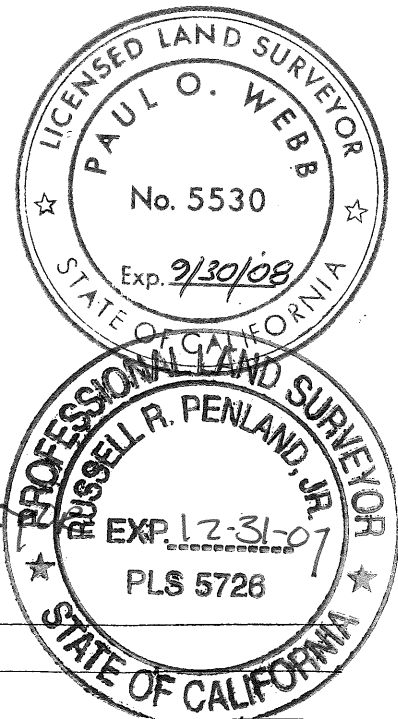
SURVEYOR'S STATEMENT

This Corner Record was prepared by me or under my direction in conformance with the Land Surveyors' Act on AUGUST 13, 2007
Signed Paul O. Webb L.S. or R.C.E. Number LS 5530

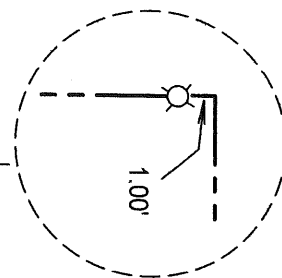
COUNTY SURVEYOR'S STATEMENT

This Corner Record was received 8-24-2007 and examined
and filed 8-19-2007.
Signed Russell R. Penland, Jr. Title COUNTY SURVEYOR

County Surveyor's Comment _____



Detail A - no scale



LOT 6, DUTTON MANOR ADDITION

FILED JULY 29, 1912, MAP BOOK 27, PAGE 7

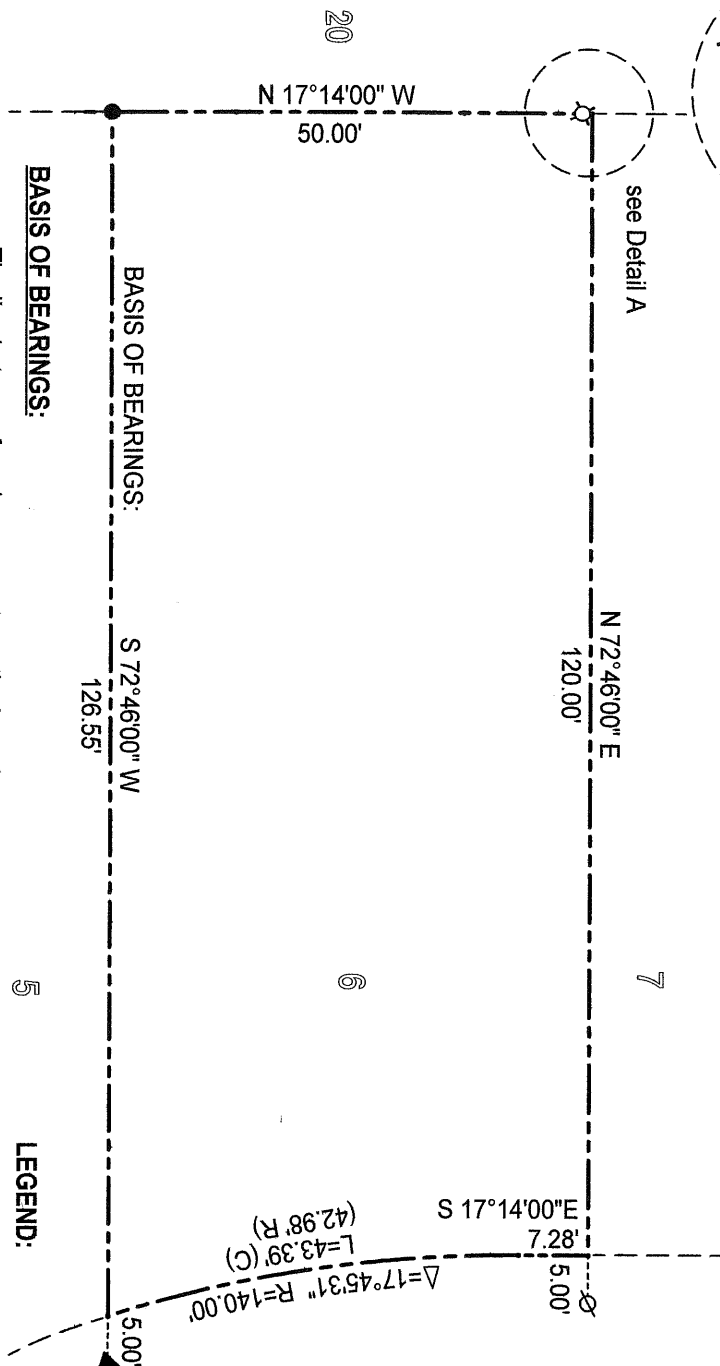
ALAMEDA COUNTY RECORDS

CITY OF SAN LEANDRO, COUNTY OF ALAMEDA, CALIFORNIA

APN. 26-297-15

AUGUST, 2007

MAP OF BROADMOOR (23 M 68)



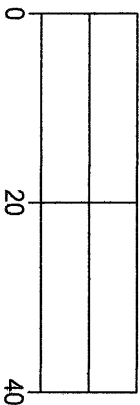
BASIS OF BEARINGS:

The line between found monuments on the boundary between Lots 5 and 6 taken as N 72°46'00" W per Corner Record 937 filed with the Alameda County Surveyor, dated November 22, 1997, and the map of Dutton Manor Addition, Book 27 Maps, Page 7.

LEGEND:

- found 3/4" iron pipe LS 5530 per Corner Record 937
- ▲ found nail per Corner Record 937
- ▲ reset nail and tag LS 5530
- ⊗ set 3/4" iron pipe LS 5530
- ⊗ set nail and tag LS 5530
- (R) record per 27 M 7
- (C) calculated distance

SCALE: 1 INCH = 20 FEET



Paul O. Webb-Licensed Surveyor
2724 Ninth Street, Suite B
Berkeley, Ca. 94710

job# 070727B

August 12, 2007

WEST MERLE COURT
(50' wide)