

TRACT NO. 3742

GEORGETOWN UNIT NO. 1

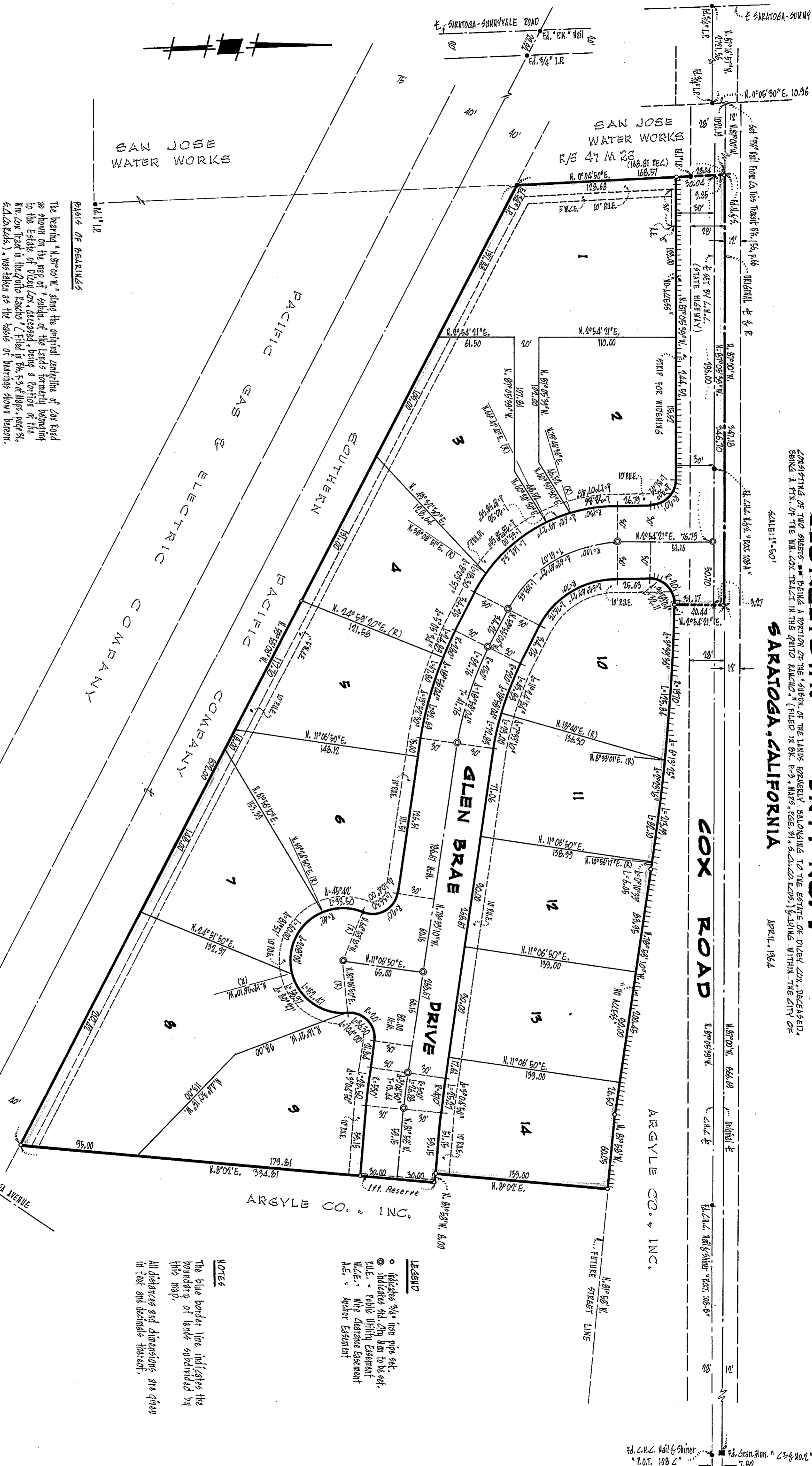
SARATOGA, CALIFORNIA

APRIL, 1964

CONSISTING OF TWO SHEETS BEING A PORTION OF THE "SUBDIVISION OF THE LANDS FORMERLY BELONGING TO THE ESTATE OF DYCE COX, DECEASED, BEING A SON OF THE WILCOX TRACT IN THE QUINCY RANCH" (FILED IN BK. 13, MAPS, PAGE 31, S.D.C. 1209) & LING WITHIN THE CITY OF

SCALE: 1"=50'

APRIL, 1964



LEGEND

- indicates 3/4" iron pipe set.
- ⊙ indicates 4" city water to be set.
- ⊕ indicates public utility easement.
- W.L.E. = Wide Distance Easement.
- A.E. = Anchor Easement.

NOTES

The blue border line indicates the boundary of lands subdivided by this map.

All distances and dimensions are given in feet and decimals thereof.

BASE OF BEARINGS

The bearing "N. 87° 00' W." along the original centerline of Cox Road as shown on the map of "Subdiv. of the Lands formerly belonging to the Estate of Dyer Cox, deceased, being a portion of the Wilcox Tract in the Quincy Ranch" (Filed in Bk. 13 of Maps, page 31, S.D.C. 1209), was taken as the basis of bearings shown hereon.