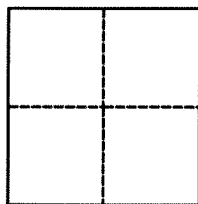


# CORNER RECORD

Agency Index BK 146 PG 9Document Number CR 15617City of FREMONT County of ALAMEDA, CaliforniaBrief Legal Description #19 (FARWELL DRIVE AND VERNON AVENUE INTERSECTION)**CORNER TYPE****COORDINATES (Optional)**Government Corner ☐ Control  
Meander ☐ Property  
Rancho ☐ OtherN. \_\_\_\_\_ E. \_\_\_\_\_  
Elevation \_\_\_\_\_  
Units Metric ☐ U.S. Survey Foot ☒

Horizontal Datum \_\_\_\_\_

Zone \_\_\_\_\_ Epoch Date \_\_\_\_\_

Date of Survey 07/26/2021

Vertical Datum \_\_\_\_\_

☐ Complies with Public Resources Code §§8801-8819☐ Complies with Public Resources Code §§8890-8902PLS Act Ref.: ☐ 8765(d) ☒ 8771 ☐ 8773 ☐ Other:Corner/  
Monument: ☐ Left as found ☐ Established ☐ Rebuilt ☒ Pre-Construction  
☐ Found and tagged ☐ Reestablished ☒ Referenced ☐ Post-Construction

Narrative of corner identified and monument as found, set, reset, replaced, or removed:

☒ See sheet #2 for description(s):

FOUND 2.5" BRASS DISK WITH PUNCH IN MONUMENT WELL AT  
FARWELL DRIVE AND TROY AVENUE INTERSECTION. SET FOUR  
CUT "X" REFERENCES AS SHOWN ON SHEET 2.

**SURVEYOR'S STATEMENT**

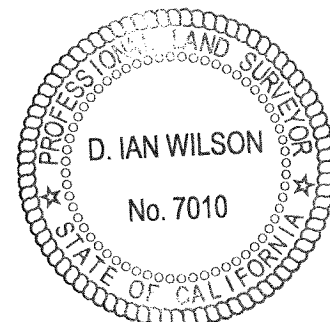
This Corner Record was prepared by me or under my direction in conformance with

the Professional Land Surveyors' Act on FEBRUARY 16, 2022Signed  P.L.S. or R.C.E. No. LS 5837**COUNTY SURVEYOR'S STATEMENT**

This Corner Record was received \_\_\_\_\_

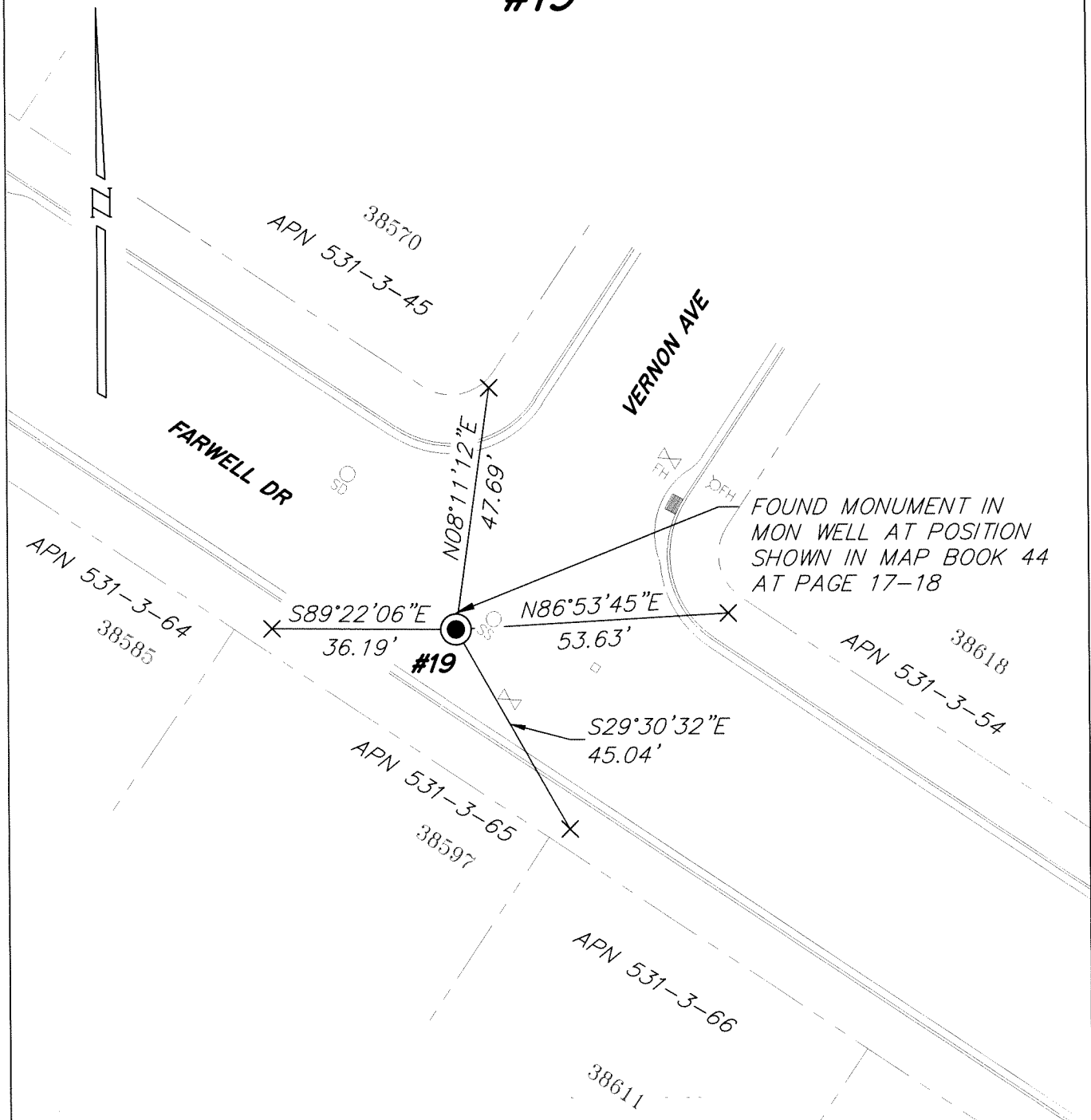
and examined and filed FEB 23 2022Signed  P.L.S. or R.C.E. No. 7010Title ALAMEDA COUNTY SURVEYOR

County Surveyor's Comment



#19

NO SCALE

**LEGEND**

- FOUND MONUMENT IN MON WELL
- × SET CUT "X" IN WALK
- FH FIRE HYDRANT SHUTOFF
- FH ○ FIRE HYDRANT

**NOTES**

1. NOTE THAT BEARINGS SHOWN ARE FOR ANGULAR CONTROL FROM LOCAL CONSTRUCTION SURVEY DATA.