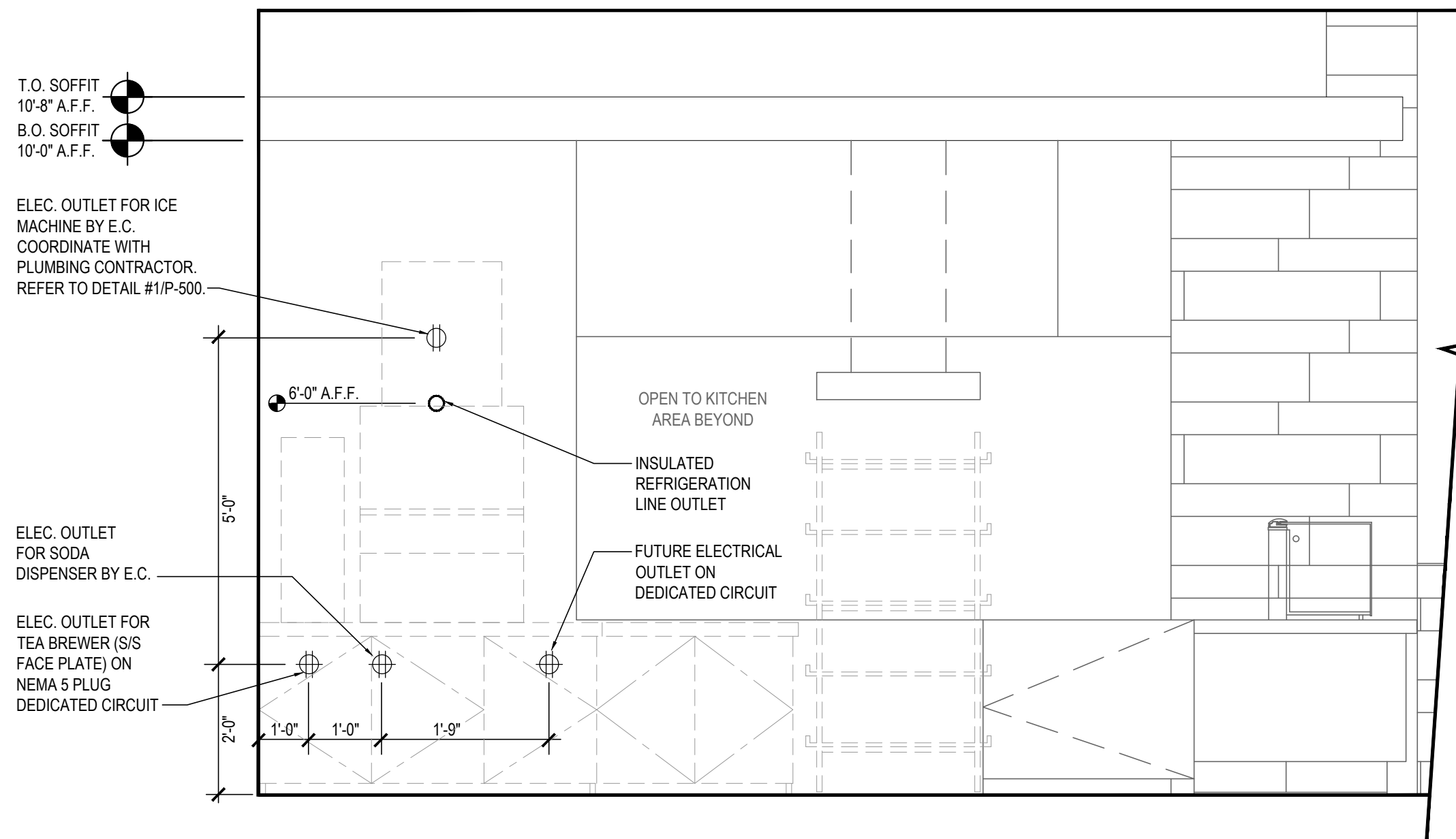


BOH REAR WALL ELEVATION

9

NOT TO SCALE

E-200

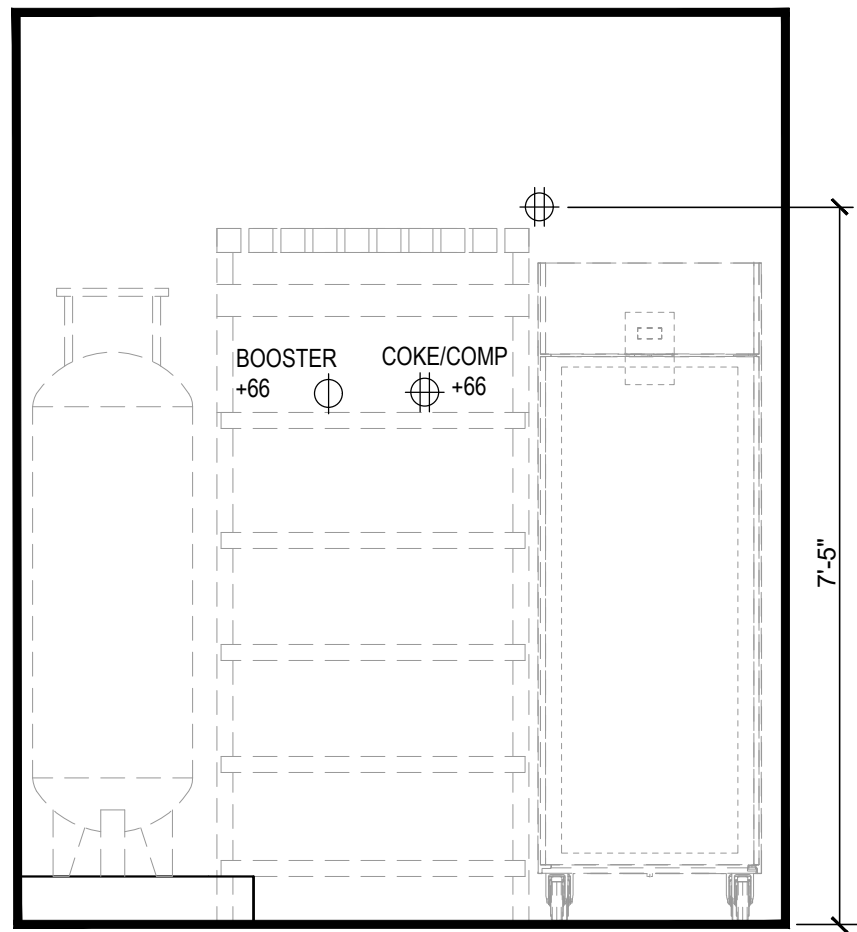


DRINK STATION ELEVATION

5

NOT TO SCALE

E-200

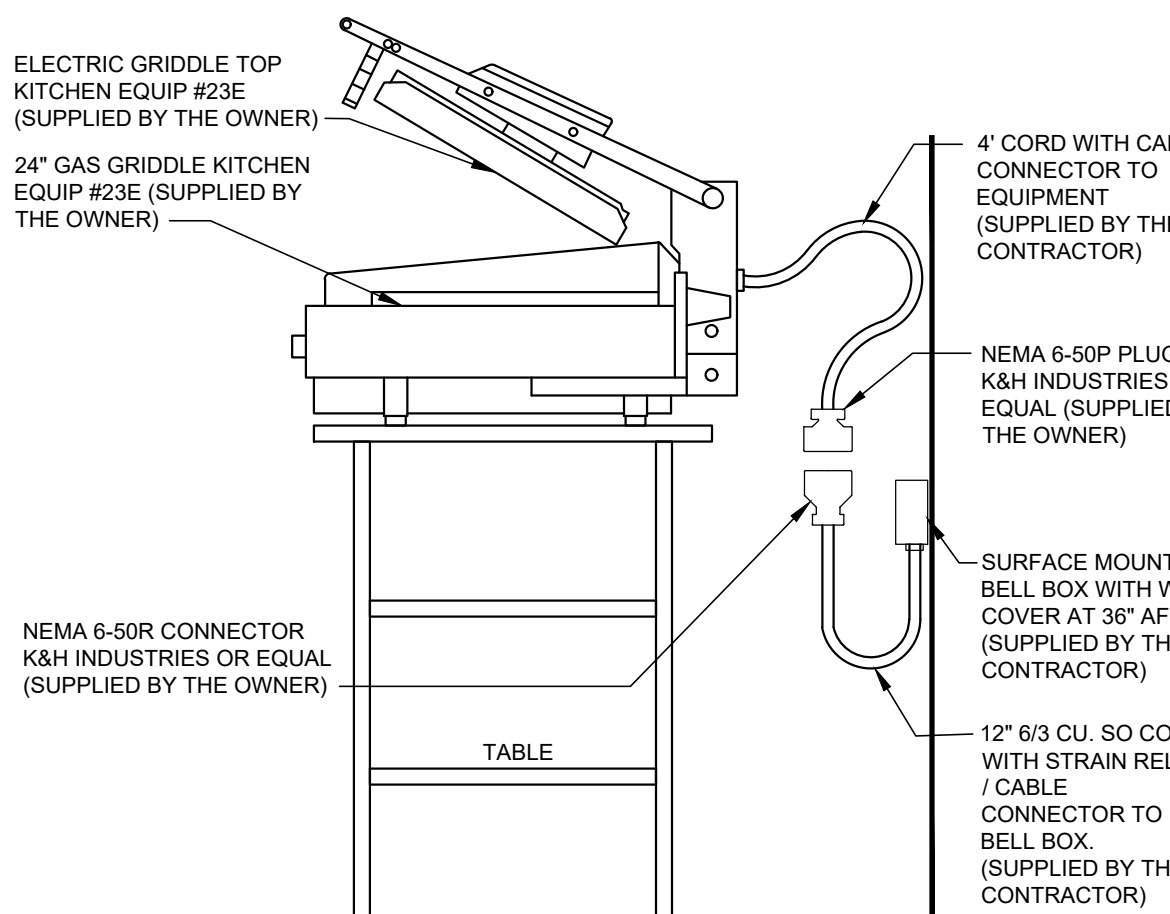


CO2 ELEVATION

7

NOT TO SCALE

E-200

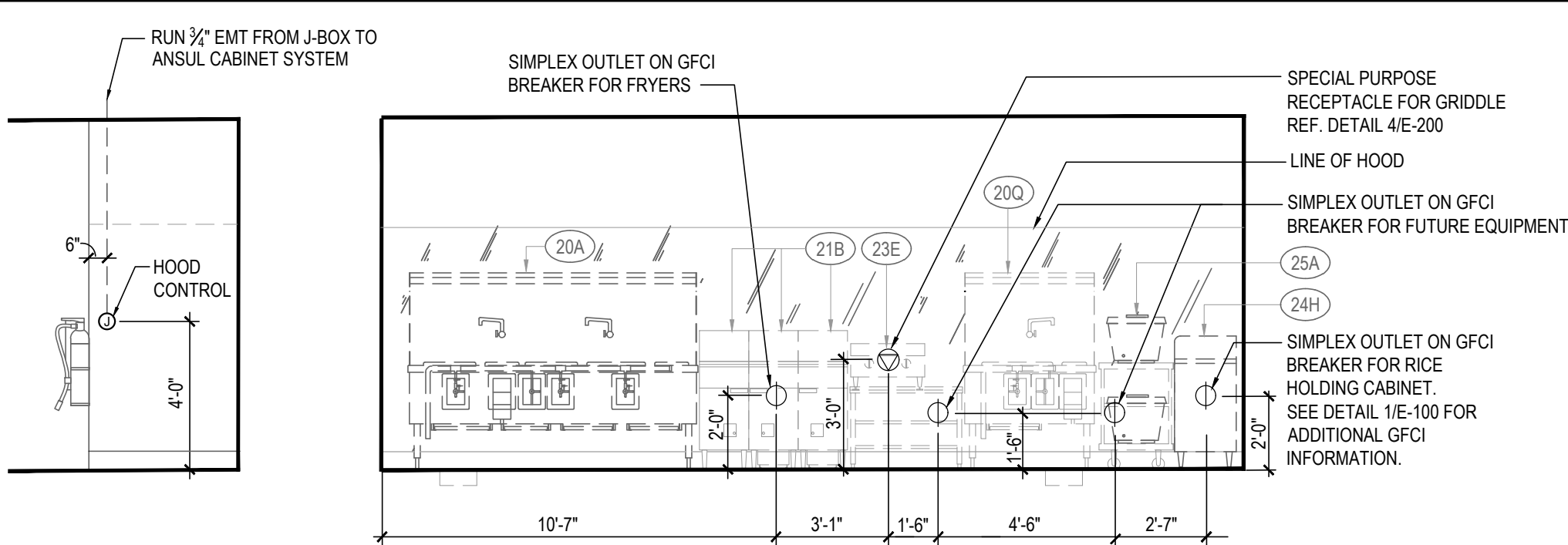


GRIDDLE 23E

4

NOT TO SCALE

E-200

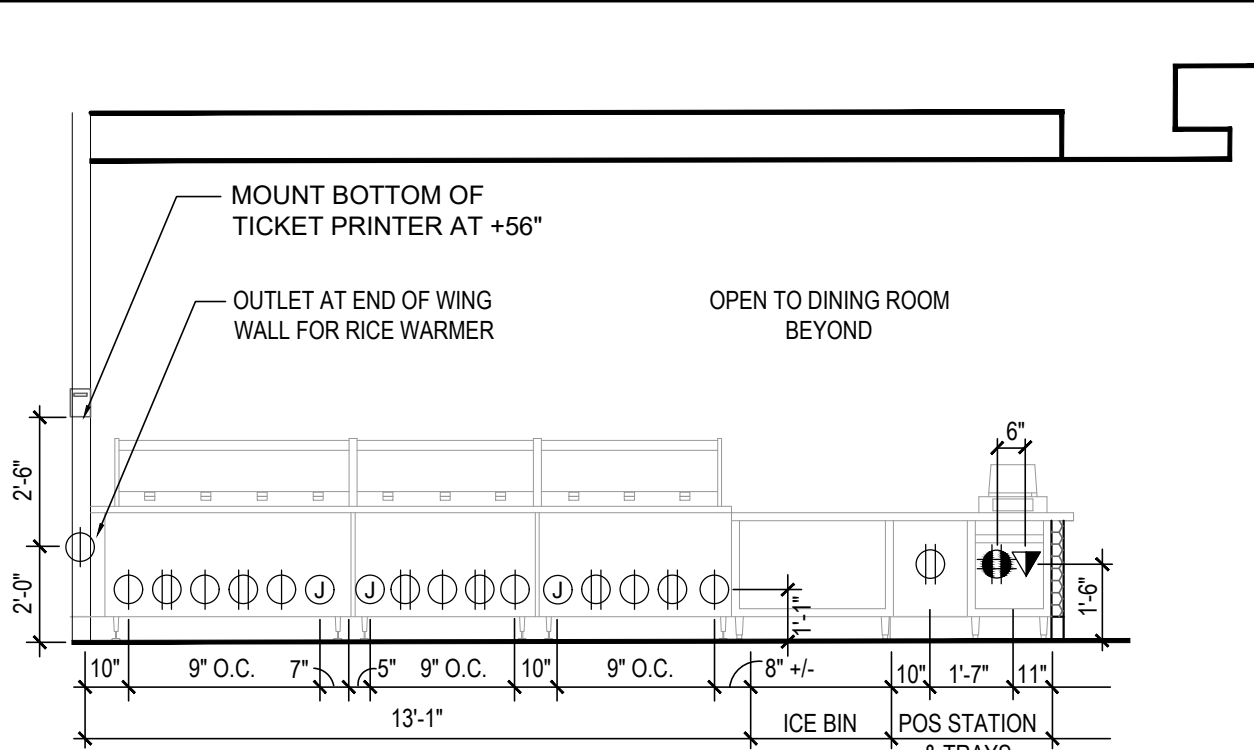


COOKLINE ELECTRICAL ELEVATIONS

6

NOT TO SCALE

E-200



P.O.S. & SERVICE LINE ELEVATION

3

NOT TO SCALE

E-200

(NOT USED) DRIVE-THRU ELEVATIONS

2

Scale: approx. 1/4"=1'-0"

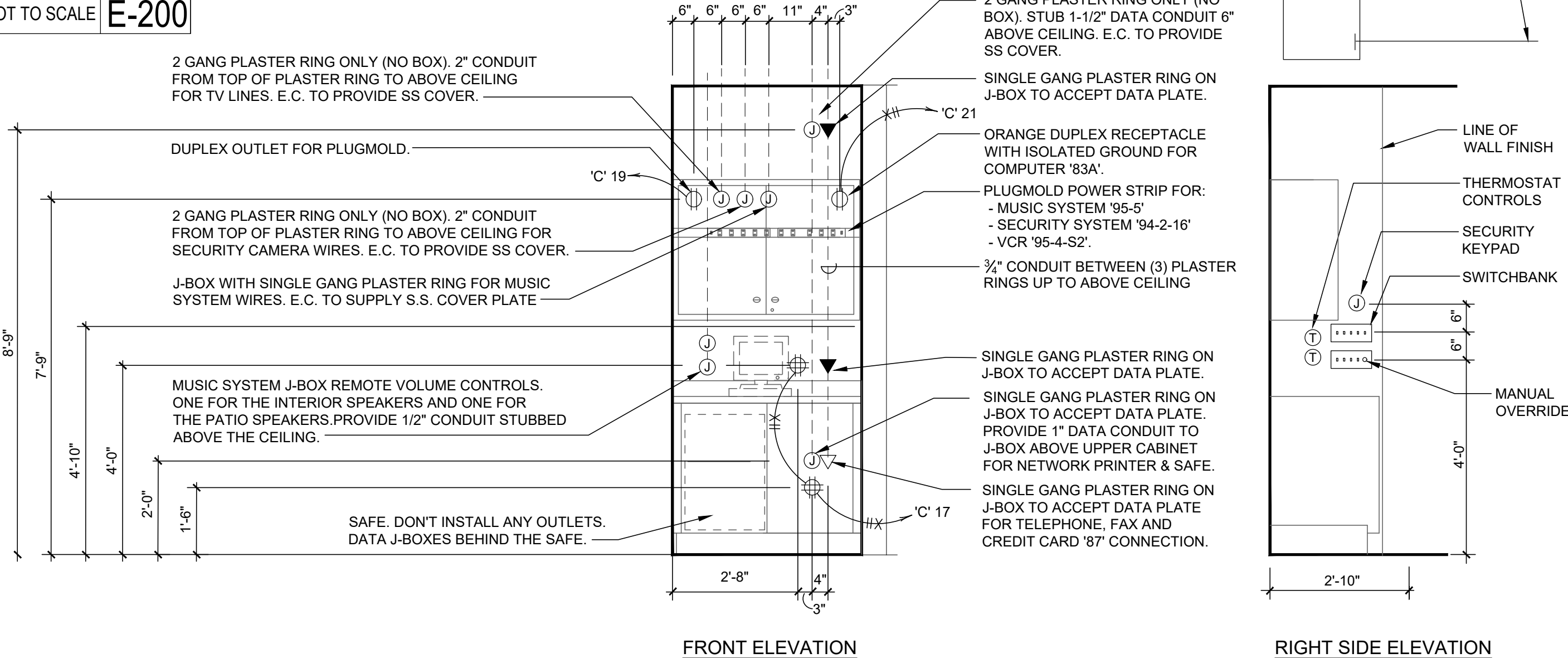
E-200

(NOT USED) MONITOR ELEV

8

NOT TO SCALE

E-200



MANAGER STATION ELEVATIONS

1

NOT TO SCALE

E-200



PANDA EXPRESS, INC.
1683 Walnut Grove Ave.
Rosemead, California
91770
Telephone: 626.799.9898
Facsimile: 626.372.8288

All ideas, designs, arrangement and plans indicated or represented by this drawing are the property of Panda Express Inc. and were created for use on this specific project. None of these ideas, designs, arrangements or plans may be used by or disclosed to any person, firm, or corporation without the written permission of Panda Express Inc.

REVISIONS:

ISSUE DATE:

LANDLORD REVIEW	03-04-2022
FINAL LANDLORD REV.	06-20-2022
PERMIT	07-19-2022
BID SET	10-06-2022
CONSTRUCTION SET	01-16-2023

DRAWN BY: G. COLLINS

PANDA PROJECT #: D7861
ARCH PROJECT #: JCDT21-0268

I certify that these documents were prepared or approved by me, and that I am a duly licensed architect/engineer under the laws of the State of Maryland, license number Sean P. Pick-Kell 52379 expiration date 03-08-2024

NORR
ARCHITECTS PLANNERS

PANDA EXPRESS

TRUE WARM & WELCOME
10300 Mill Run Circle
Owings Mills, MD 21117

E-200

ELECTRICAL ELEVATIONS

TRUE WARM & WELCOME 2300 R6 RR

CONSTRUCTION SET
01-16-2023