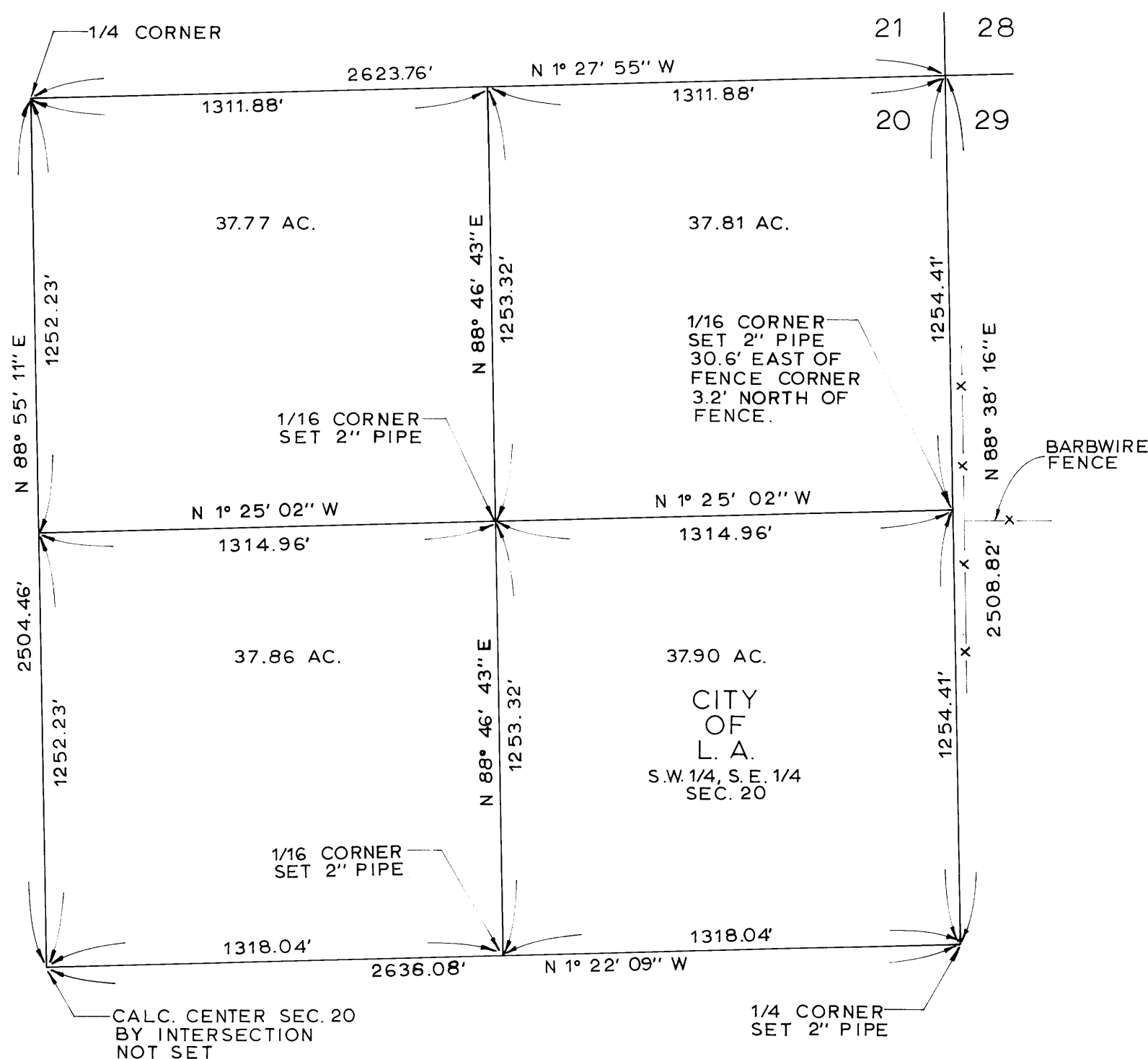
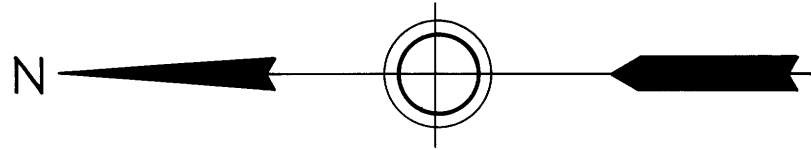
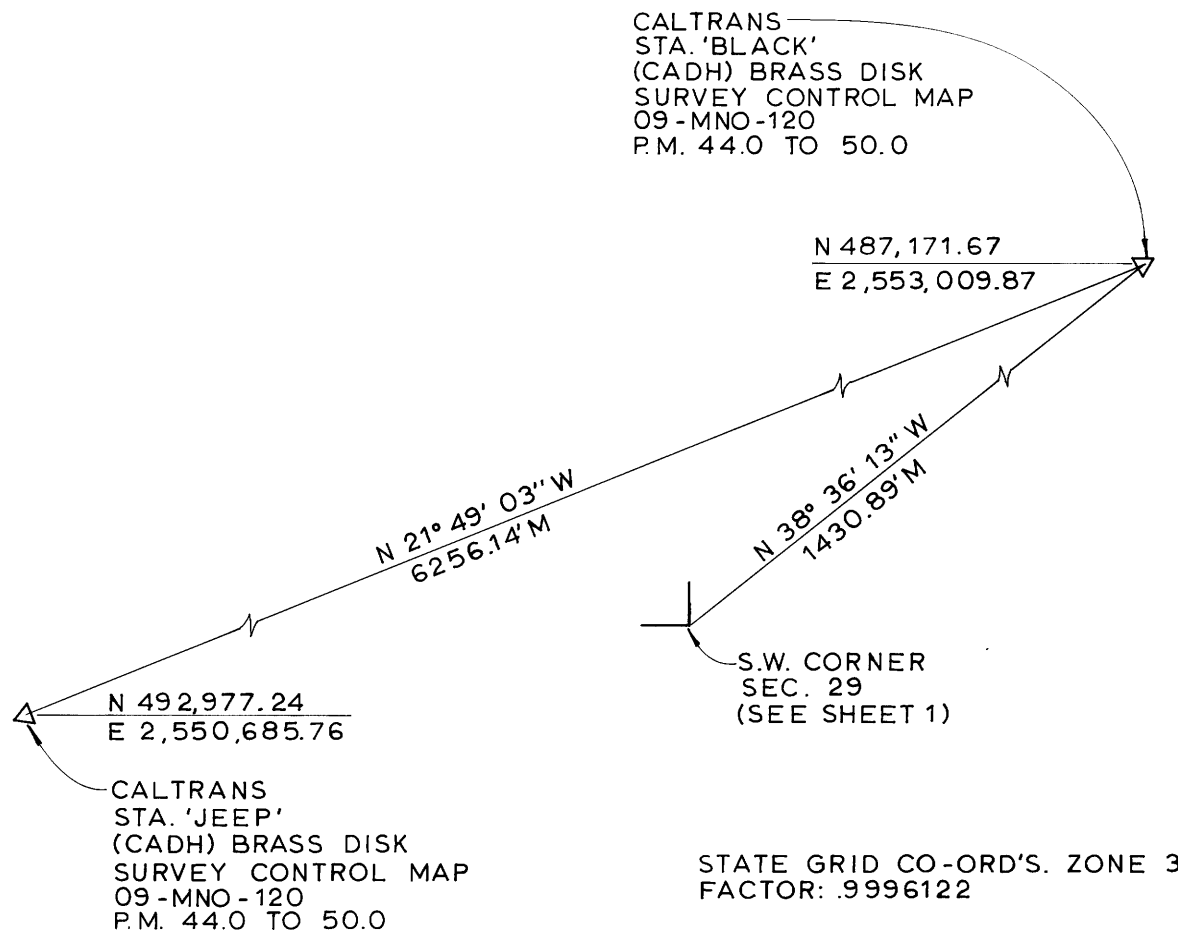


IN THE UNINCORPORATED  
TERRITORY OF THE COUNTY  
OF MONO, STATE OF CALIFORNIA  
OF SECTION 20 & 29, TOWNSHIP 1 SOUTH  
RANGE 31 EAST, MOUNT DIABLO  
BASELINE AND MERIDIAN



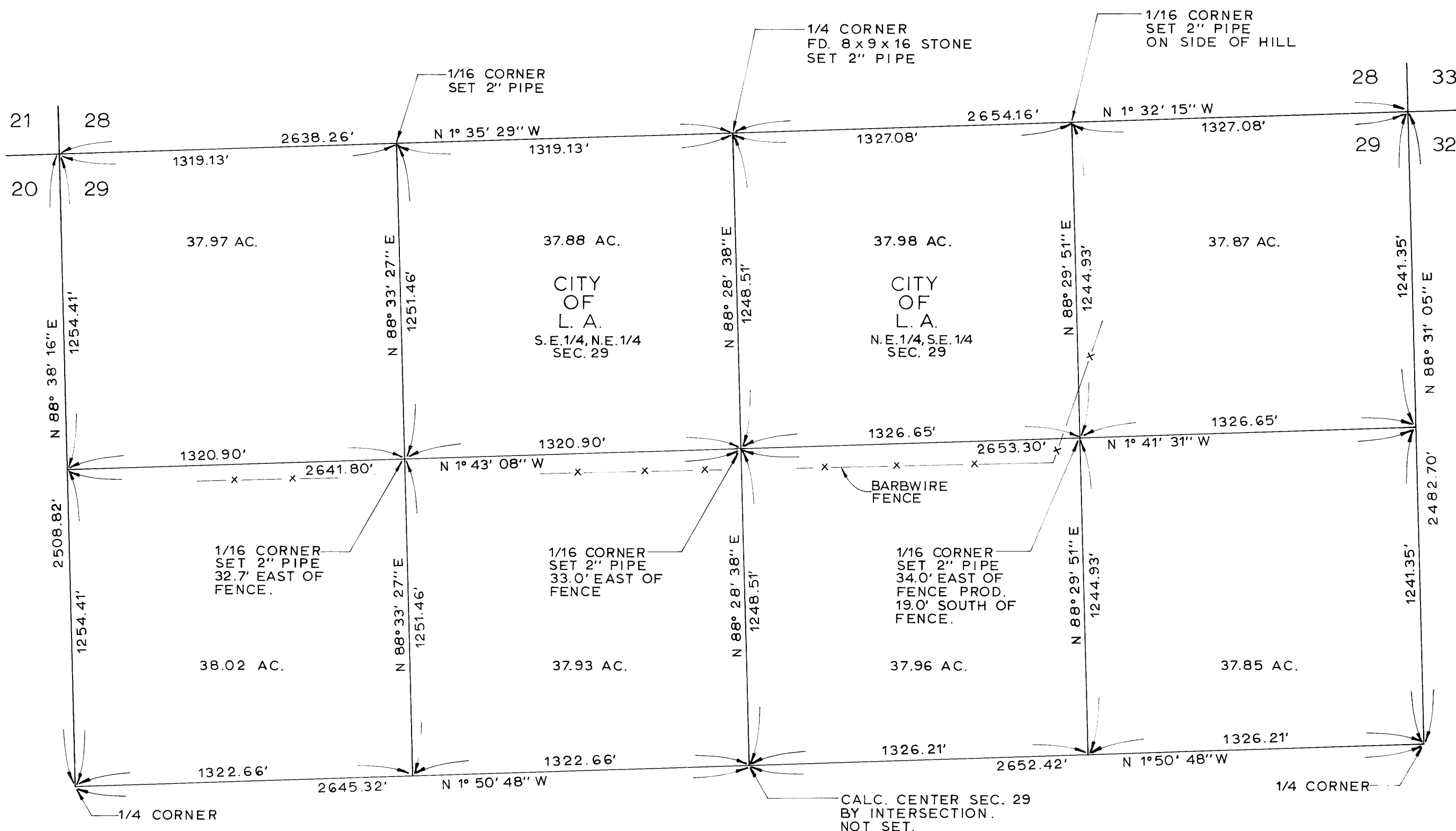
S.E. 1/4 SEC. 20

DETAIL 2  
1" = 400'



GRID BASIS OF BEARINGS

DETAIL 1  
SCALE: NONE



E. 1/2 SEC. 29

DETAIL 3  
1" = 400'

P/S. Vol 1, Pg. 35-A