

G1 SECTION AT COLUMN WRAP

1 1/2" = 1'-0" FI-EI

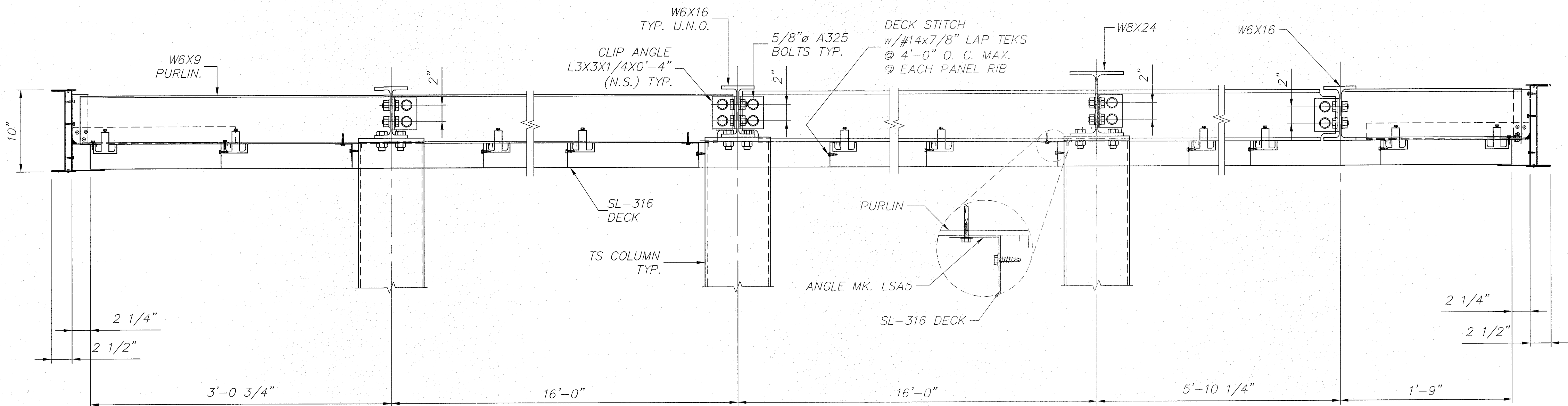
G5 NOT USED

L14 NOT USED

N.T.S.

G14 NOT USED

N.T.S.



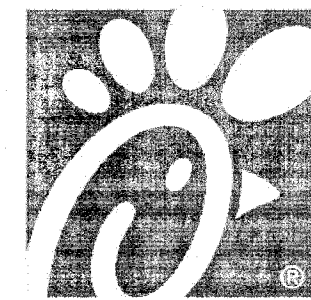
A1 FASCIA SECTION

1 1/2" = 1'-0" FI-EI

A14 DESIGN LOADS

N.T.S.

DEAD LOAD = 3 p.s.f.(DECK + LIGHTS) +
WEIGHT OF STRUCTURAL COMPONENTS
LIVE LOAD = 20 p.s.f.
SNOW LOAD = 5 p.s.f.
V, ULT = 116 m.p.h. EXP C
V, ASD = 90 m.p.h. EXP C
BLDG CODE = 2012 INTERNATIONAL BUILDING CODE
W/ GEORGIA AMENDMENTS 2014, 2015, 2017
EQUIVALENT LATERAL FORCE PROCEDURE
LATERAL FORCE RESISTING SYSTEM = CANTILEVERED
COLUMN SYSTEM-ORDINARY STEEL MOMENT FRAME
SITE CLASS = D
Ss (0.2) = 0.28
S1 (1.0) = 0.11
SDS = 0.29
SD1 = 0.17
Fa = 1.58
Fv = 2.38
R = 1.25
IMPORTANCE FACTOR = 1.0
RISK CATEGORY = II
SEISMIC DESIGN CATEGORY = B
CS = 0.232
CONSTRUCTION TYPE = IIB
OCCUPANCY CATEGORY = M
TOTAL SEISMIC BASE SHEAR BOTH DIRECTIONS = 1.78 KIPS

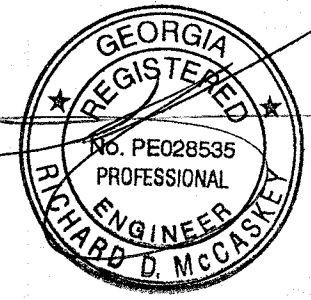


Chick-fil-A

Chick-fil-A
5200 Buffington Road
Atlanta, Georgia 30349-
2998

LANE
SUPPLY, INC.
120 FAIRVIEW
ARLINGTON, TX. 76010
(817) 261-9116

SEAL:



DEC 20 2017

CHICK-FIL-A
SAR CHEROKEE PLACE. FSR
115 CHEROKEE PLACE
CARTERSVILLE, GA 30121

FSR# 0534

REVISION SCHEDULE
NO. DATE DESCRIPTION

CONSULTANT PROJECT # 59956

PRINTED FOR Permit

DATE 2017/12/18

DRAWN BY AFG

CHECKED BY RM

Information contained on this drawing and in all digital files
produced for above named project may not be reproduced
in any manner without express written or verbal consent
from authorized project representatives.

SHEET

CANOPY SECTIONS

SHEET NUMBER

F2FC-7

E5 OF 5